

2

WHAT IS THE LARGEST DESERT ON EARTH?

Look and see...

Why is the Earth called the blue planet?



Have you ever travelled abroad?



Song

Five oceans, seven continents



Can you name any continents,
seas or oceans?

DOCUMENTARY

Great landmarks of the world

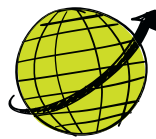
Investigate

In this unit, you will become a travel journalist.

To do this, you will:

- explore countries, cities and landmarks from around the world.
- discover rivers and mountains from around the world.
- describe where you have been and what you have seen to your classmates.

WHAT IS THE DIFFERENCE BETWEEN A MAP AND A GLOBE?



By the end of this lesson, you will know what the different lines on a map are.

A **world map** is a flat representation of the Earth. World maps contain different lines that help us measure distances and locate places.



The **equator** is an imaginary line that divides the Earth into the northern hemisphere and the southern hemisphere. It goes horizontally around the Earth.

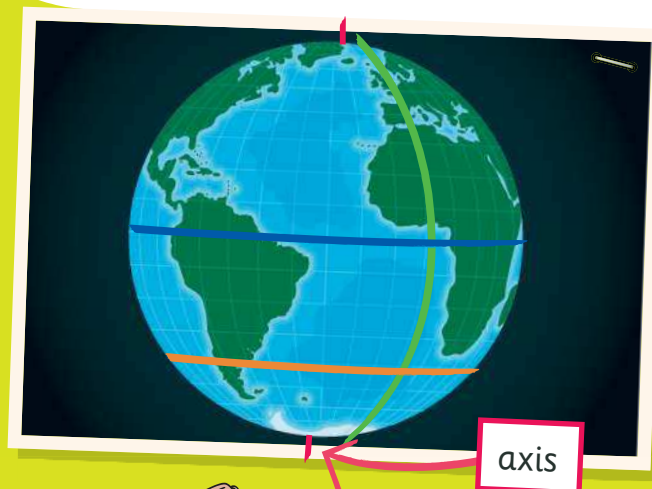
Lines of longitude are vertical.

Lines of latitude are horizontal.

Find out which countries the equator passes through.

Globes are different from world maps. They represent the Earth as a sphere. They are tilted, like the Earth, on an axis.

If you want to travel around the world, you need a passport. Your passport contains your personal information.



Investigate STAGE 1

- Fold a piece of card in two.
- Stick a photo of yourself on the left-hand page.
- Write your name, date of birth, place of birth and nationality under your photo.



THE WORLD IN YOUR HANDS

Hands on...

Before you start

Globes, like the Earth, are not perfect spheres.

Materials

round balloon, newspaper, bowl, glue, water, paintbrush, blue paint, outlines of the continents, coloured pencils, scissors, needle

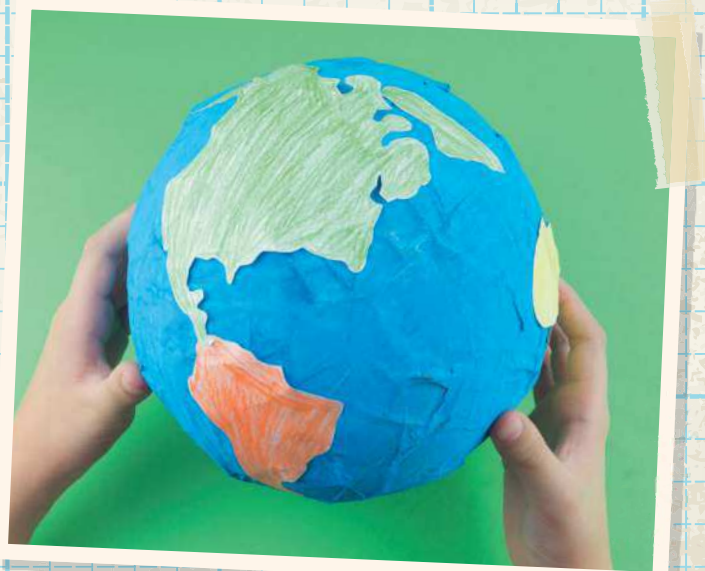
Method

- 1 Blow up the balloon.
- 2 Cover newspaper with a mixture of glue and water. Then, cover the balloon with three or four layers of the newspaper and leave it to dry.
- 3 Paint the outside of the balloon blue and leave it to dry.
- 4 Colour in the outlines of the continents.
- 5 Cut out the continents and stick them on the globe.
- 6 Pop the balloon with a needle. Remove it from the globe.

Conclusions

How many continents are there?

What does the globe show us about the Earth? Think about its shape and the amount of land and water.



The globe shows us that ...

HOW MUCH OF THE EARTH'S SURFACE IS WATER?

Approximately 70% of the Earth's surface is covered in water, in the form of **oceans** and **seas**. The rest of the Earth's surface is land. The land is divided into **continents**. A continent is a very large area of land.

There are **seven continents**. Order them according to their area.

Which continent do you think has the most countries?

Find out which continent has the largest population.



There are **five oceans** on Earth.

Find the oceans on the map.



Penguins do not live only in Antarctica. There are penguins in South America, Africa and Australasia, too.



Seas are smaller than oceans.
 They are located where the
 oceans meet the land.

Find three seas
 on the map.

By the end of this
 lesson, you will
 be able to name
 the five oceans
 and seven
 continents.



About 250 million
 years ago, there was
 only one continent,
 called *Pangaea*.
 It was surrounded
 by one ocean, called
Panthalassa. Find out
 why we have seven
 continents today,
 instead of one.



Which continent
 is ... on?

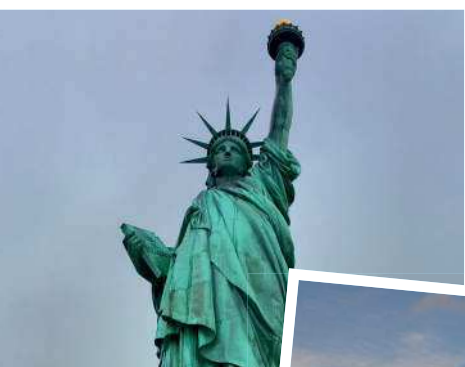
Which oceans
 surround ... ?

- Investigate** STAGE 2
- Get into groups of three.
 - Ask each group member two questions about their country from Unit 1. *Which continent is it on? Which oceans surround it?*
 - Add the information to the right-hand page of your passport.

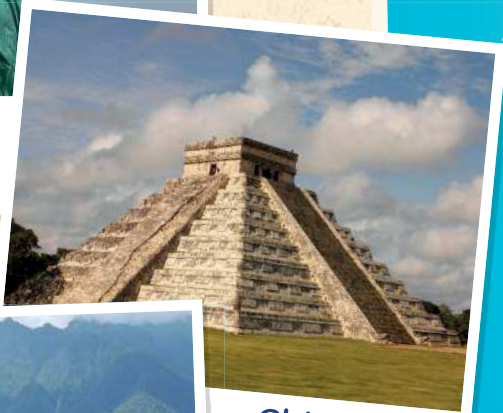
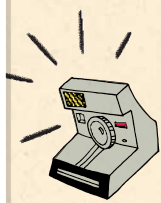
WHAT IS THE HIGHEST CITY IN THE WORLD?

Which countries are the landmarks on this page located in?

This **political map** shows how the seven continents are divided into different **countries**. We can also see some of the most amazing landmarks¹ on Earth.



Statue of Liberty



Chichen Itza



Machu Picchu



Taj Mahal



La Paz is the highest city and capital city in the world.

Find another famous world landmark hidden in the unit.



Pyramids of Giza

This political map also shows **capital cities**. The **government** of a country is usually located in its capital city.

Sometimes, instead of saying *capital city* we just say *capital*.

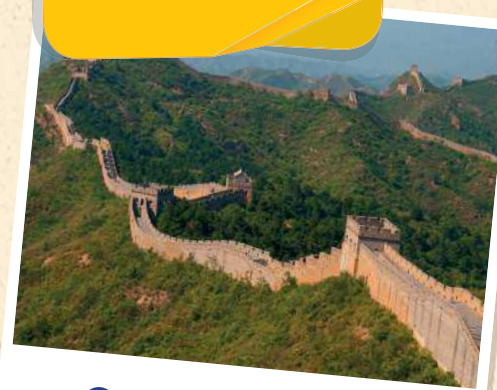
By the end of this lesson, you will know where some of the world's greatest landmarks are.

Can you pronounce the name of this city?!

Ulaanbaatar, the capital of Mongolia, is the coldest capital city on Earth.

Tokyo is the capital city with the biggest population.

Kuwait City, the capital of Kuwait, is the world's hottest city.



Great Wall of China

The construction of the Great Wall of China began over 2,000 years ago.



Sydney Opera House



Investigate STAGE 3

- Find out what the major cities are in your group members' countries. Do they have any famous landmarks?
- Add this information to your passport.

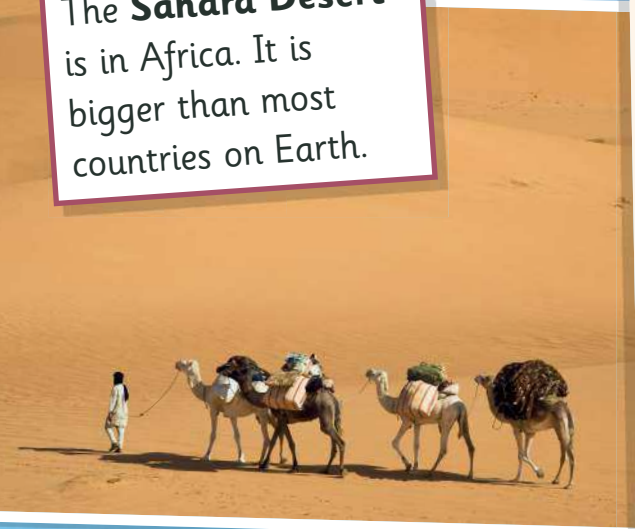
What are the major cities in ... ?

Landmark: something that is famous and makes a place recognisable

WHAT IS THE HIGHEST MOUNTAIN IN THE WORLD?

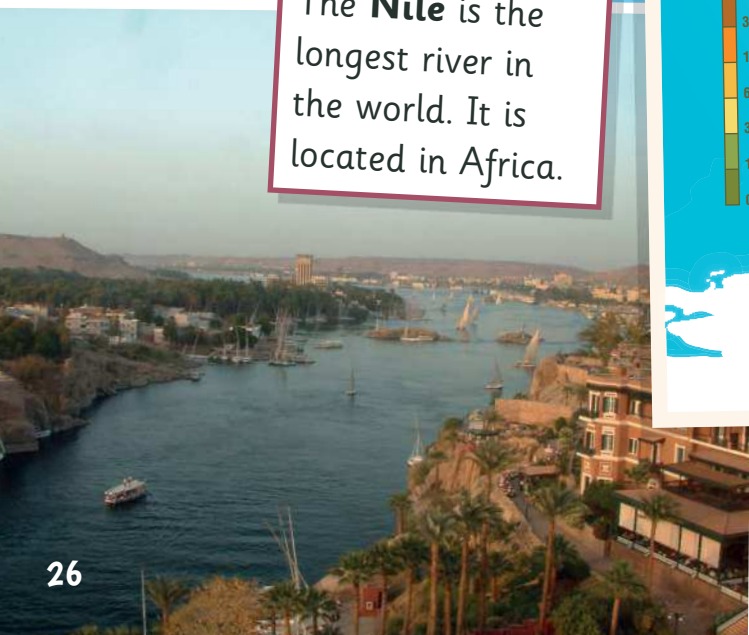
This **physical map** shows the **highest mountains** on each continent. It also shows the **longest rivers** on Earth, as well as **mountain ranges** and **deserts**. These are **physical features**.

The **Sahara Desert** is in Africa. It is bigger than most countries on Earth.



The Sahara Desert is *not* the biggest desert on Earth. Find out what is.

The **Nile** is the longest river in the world. It is located in Africa.



Look at the key on the map. Which colour shows the highest mountain ranges?



Find out what the widest river in the world is.

The **Mekong** flows¹ through six countries in Asia.

By the end of this lesson, you will be able to name the highest mountain on each continent.

The **Himalayas** are the highest mountain range in the world. They are located in Asia and are home to Mount Everest.



Look back
Which mountain range is Machu Picchu located in?

Are there any rivers, mountains or deserts in ... ?


to flow: to move continuously in one direction (especially liquids)

Investigate

STAGE 4

- Ask your group members about the physical features of their countries.
- Add this information to your passport.

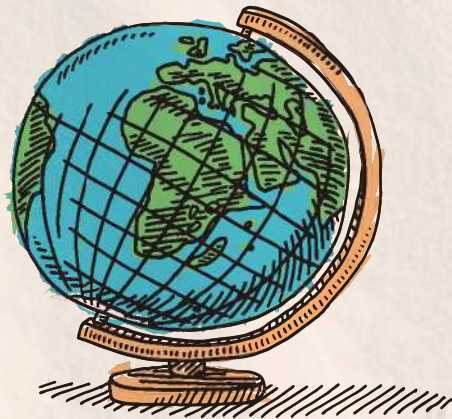
Language skills

1  Listen and write the answers in your notebook.



Travelling around the world

- a** Number of continents:
- b** Number of countries:
- c** Favourite country:
- d** Modes of transport:
- e** Favourite landmark:



2 Copy the sentences with the correct option in your notebook.

- a** La Paz is *the highest* / *highest* / *higher* capital city in the world.
- b** Wellington is *windier* / *the windiest* / *the windiest* city in the world.
- c** What is the *most dry* / *driest* / *driest* capital city in the world?
- d** Seas are *smaller than* / *more small* / *smaller* oceans.
- e** There are seven continents *at* / *in* / *on* Earth.

1 Look and read. Copy the descriptions in your notebook and choose the correct words.



seas

- a** There are five of these on Earth.
- b** There are seven of these large areas of land on Earth.
- c** These are found where an ocean meets the land.

- a** What is the highest mountain in the world?
- b** Which is the biggest continent in the world?
- c** What is the equator?

Assessment link
Go to page 80 for more activities.

- Draw and design a cover for your passport. Find a picture of the flag of each country, or draw them.
- Get into new groups of three.
- Imagine that you have travelled to the countries in your passport. Tell your new group members about your amazing journey. Use your passport to help you remember what you saw.

First, I went to ... , which is ...

I went to the city of ... and ...

First, I went to ... , which is in
I went to the city of ... and saw
It was incredible!