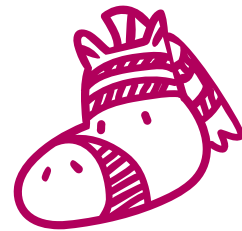


3

ALL ABOUT ANIMALS



- 1 Read the text. Choose a word from the box.
 Write the correct word next to letters b–e.

~~giraffe~~ white long herbivore zebra



The okapi is a mammal. It looks like two different animals, the (a) giraffe and the (b) _____ .
 It looks like a giraffe because it has got a (c) _____ neck. Its head looks like a giraffe, too.
 The okapi has got black and (d) _____ stripes, like a zebra.

The okapi eats plants and fruit. It is a (e) _____ .

- 2 Read. Put a tick (✓) or a cross (X) in the box.

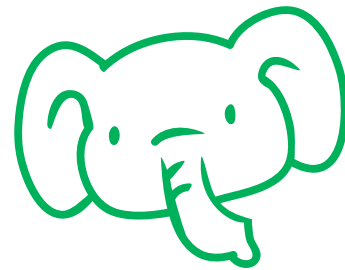
a Mammals are vertebrates.

b Mammals lay eggs.

c Mammals are viviparous.

d Mammals have fur or hair.

e Mammals have scales.



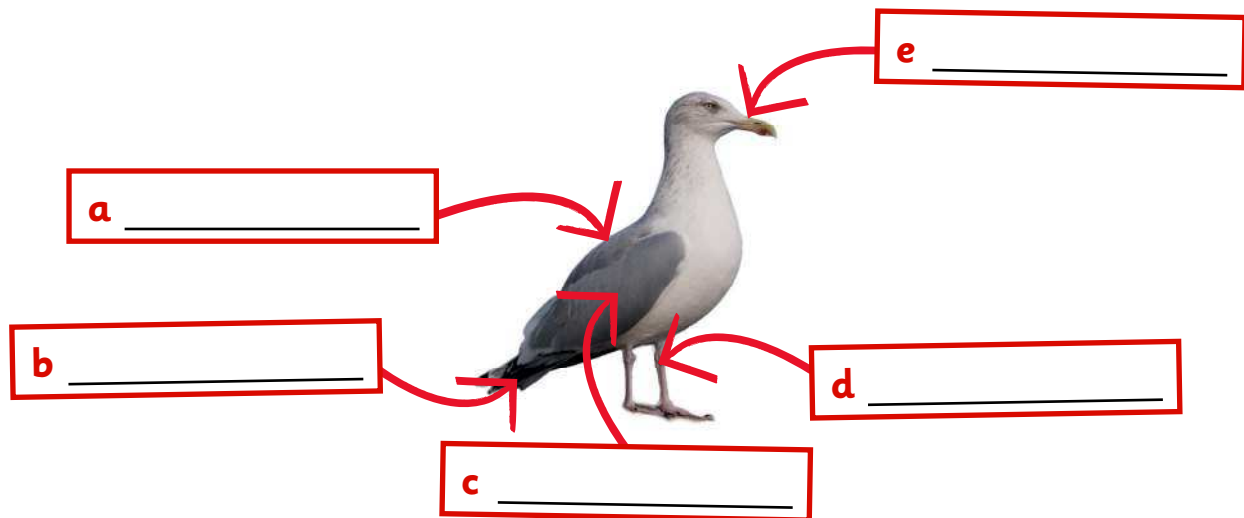
3 Draw a fish. Label it.

fins tail gills scales



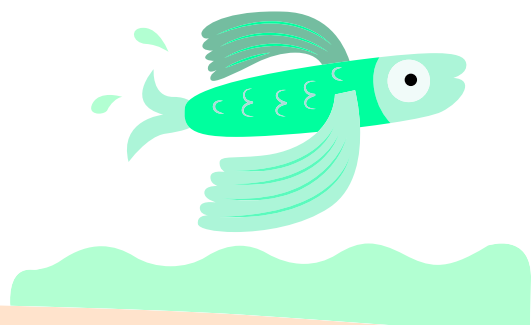
4 Label the bird.

feathers wings beak tail legs



5 Read and circle.

Fish and birds are *viviparous* / *oviparous*.
 Fish can *walk* / *swim*.
 Birds can *fly* / *slither*.



6 Look, read and match.

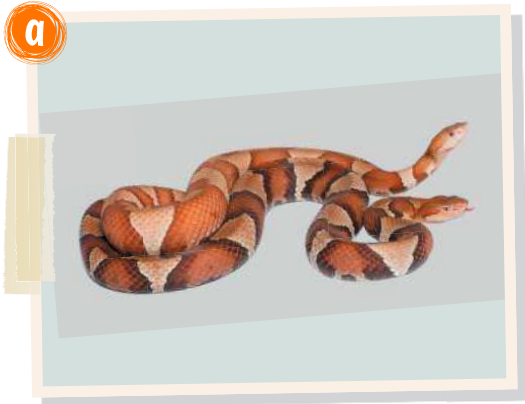
- a** moist skin
- b** eggs on land
- c** breathe with gills and lungs
- d** eggs in water
- e** breathe with lungs
- f** dry skin

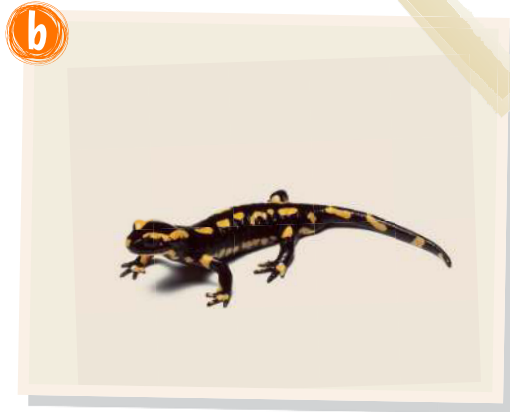


7 Circle the odd one out.

reptiles	<u>newt</u>	tortoise	snake	crocodile
	dry skin	soft eggs in water	breathe with lungs	oviparous
amphibians	salamander	newt	tortoise	frog
	viviparous	moist skin	lay eggs in water	live on land and in water

8 Look and write *reptile* or *amphibian*.









9 Draw your favourite reptile. Write.

My reptile is

_____.

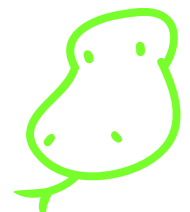
It is _____ and

_____.

It has got

_____ and

_____.



10 Read the text. Choose the right words and write them on the lines.

Grasshoppers are

(a) invertebrates. They

are (b) _____.

They have a segmented body with six limbs and joints. They have an (c) _____ for protection and two antennae.



Cuttlefish are also invertebrates. They are

(d) _____.

They have a

(e) _____ body and many tentacles. They live in the

(f) _____.

a vertebrates

invertebrates

amphibians

b molluscs

mammals

arthropods

c skeleton

exoskeleton

shell

d molluscs

fish

arthropods

e long

soft

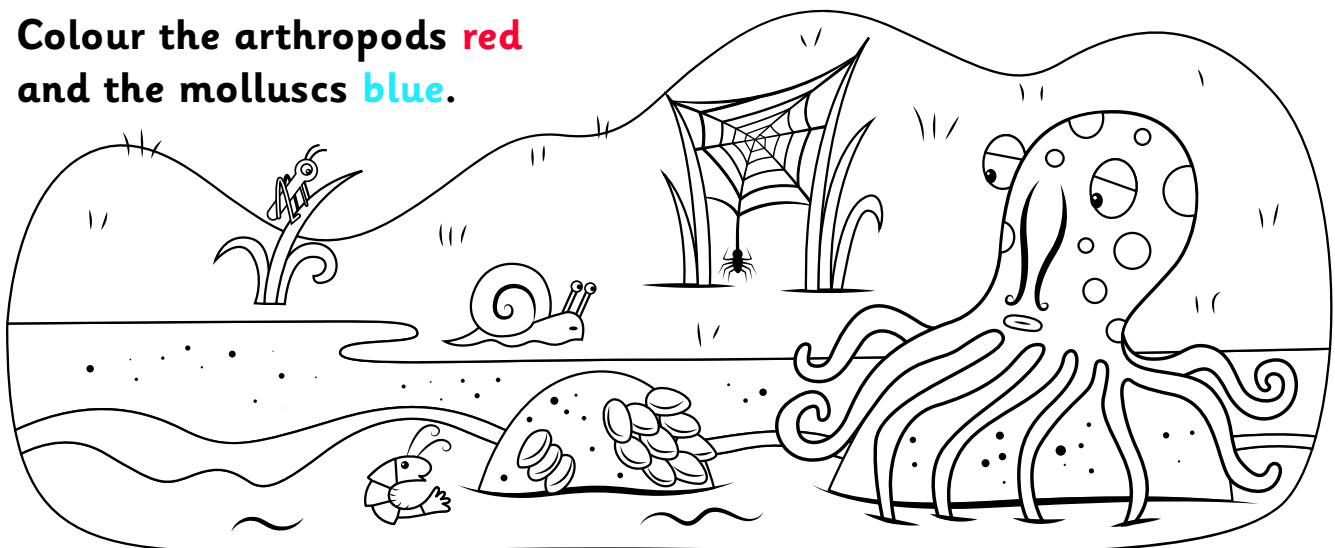
hard

f sea

country

jungle

11 Colour the arthropods red and the molluscs blue.



12 Read, write and draw.

a

I am a mammal.

I am yellow and brown.

I have got a long neck.

I eat leaves.

I am a herbivore.

What am I? _____



b

I am different colours.

I have got feathers and a beak.

I lay eggs.

My babies are ducklings.

What am I? _____



c

I am different colours.

I have got scales.

I am a carnivore.

I slither.

I have no legs.

What am I? _____

