

POPULAR CULTURE AND THE END
OF ANTIQUITY IN SOUTHERN
GAUL, c. 400–550

This book offers a new look at the transformation of the classical world in late antiquity. It focuses on a particular region, rich in both archaeological and literary evidence, and examines the social, cultural and religious history of late antique southern Gaul through the lens of popular culture. Using material culture and comparative and theoretical material alongside the often dominant normative and prescriptive texts produced by the late antique church, Lucy Grig shines a fresh light on the period. She explores city and countryside alike as contexts for late antique popular culture and considers a range of case studies, including the vibrant late antique festival of the Kalends of January. In this way, important questions of continuity, change and historical agency are brought to the fore. This title is part of the Flip it Open Programme and may also be available Open Access. Check our website Cambridge Core for details.

LUCY GRIG is Senior Lecturer in Roman History in the Department of Classics at the University of Edinburgh. She has published widely on the social, cultural and religious history of late antiquity and is the editor of *Popular Culture in the Ancient World* (Cambridge University Press, 2017) and the author of *Making Martyrs in Late Antiquity* (2004).

POPULAR CULTURE
AND THE END
OF ANTIQUITY
IN SOUTHERN GAUL,
c. 400–550

LUCY GRIG

University of Edinburgh



CAMBRIDGE
UNIVERSITY PRESS

Cambridge University Press & Assessment

978-1-108-49144-0 — Popular Culture and the End of Antiquity in Southern Gaul,

c. 400–550

Lucy Grig

Frontmatter

[More Information](#)



CAMBRIDGE
UNIVERSITY PRESS

Shaftesbury Road, Cambridge CB2 8EA, United Kingdom

One Liberty Plaza, 20th Floor, New York, NY 10006, USA

477 Williamstown Road, Port Melbourne, VIC 3207, Australia

314–321, 3rd Floor, Plot 3, Splendor Forum, Jasola District Centre,
New Delhi – 110025, India

103 Penang Road, #05–06/07, Visioncrest Commercial, Singapore 238467

Cambridge University Press is part of Cambridge University Press & Assessment,
a department of the University of Cambridge.

We share the University's mission to contribute to society through the pursuit of
education, learning and research at the highest international levels of excellence.

www.cambridge.org

Information on this title: www.cambridge.org/9781108491440

DOI: 10.1017/97811088868792

© Lucy Grig 2024

This work is in copyright. It is subject to statutory exceptions and to the provisions
of relevant licensing agreements; with the exception of the Creative Commons version
the link for which is provided below, no reproduction of any part of this work may take
place without the written permission of Cambridge University Press.

An online version of this work is published at doi.org/10.1017/97811088868792
under a Creative Commons Open Access license CC-BY-NC 4.0 which permits
re-use, distribution and reproduction in any medium for non-commercial purposes
providing appropriate credit to the original work is given. You may not
distribute derivative works without permission. To view a copy of this license, visit
<https://creativecommons.org/licenses/by-nc/4.0/>

All versions of this work may contain content reproduced under license from third
parties. Permission to reproduce this third-party content must be obtained from these
third-parties directly.

When citing this work, please include a reference to the DOI 10.1017/97811088868792

First published 2024

A catalogue record for this publication is available from the British Library

Library of Congress Cataloging-in-Publication Data

NAMES: Grig, Lucy, author.

TITLE: Popular culture and the end of antiquity in southern Gaul, c. 400–550 / Lucy Grig,
University of Edinburgh.

DESCRIPTION: Cambridge ; New York : Cambridge University Press, 2024. | Includes
bibliographical references and index.

IDENTIFIERS: LCCN 2023044428 | ISBN 9781108491440 (hardback) | ISBN 9781108798310
(paperback) | ISBN 97811088868792 (ebook)

SUBJECTS: LCSH: Popular culture – France – Provence – History – To 1500. | Popular culture – France –
Arles – History – To 1500. | Provence (France) – Social life and customs. | Arles (France) – Social life and
customs. | Provence (France) – Religious life and customs. | Arles (France) – Religious life and customs.

CLASSIFICATION: LCC DC611.P961 G75 2024 | DDC 936.4/902–dc23/eng/20240116

LC record available at <https://lccn.loc.gov/2023044428>

ISBN 978-1-108-49144-0 Hardback

ISBN 978-1-108-79831-0 Paperback

Cambridge University Press & Assessment has no responsibility for the persistence
or accuracy of URLs for external or third-party internet websites referred to in this
publication and does not guarantee that any content on such websites is, or will remain,
accurate or appropriate.

Contents

<i>List of Figures</i>	<i>page</i> vi
<i>List of Maps</i>	vii
<i>Acknowledgements</i>	viii
<i>List of Abbreviations</i>	x
1 Introduction: Popular Culture and the Study of (Late) Ancient History	i
2 Urban Contexts for Popular Culture in an Age of Transformation	36
3 Popular Culture, Society and Economy: The Countryside in Transition in Late Antiquity	73
4 Christianizing Popular Culture: The View ‘from the Pulpit’	110
5 An Alternative View: Lived Religion As Popular Culture	144
6 The Kalends of January: The Persistence of Popular Culture	173
7 Conclusions: Popular Culture and the End of Antiquity?	219
<i>References</i>	227
<i>Index</i>	258

Figures

5.1	Depiction of June on the mosaic calendar from El Djem, now at the Musée archéologique de Sousse. Photograph: Alamy	page 153
6.1	Depiction of January on the mosaic calendar from El Djem, now at the Musée archéologique de Sousse. Photograph: Alamy	180
6.2	Drawing of a ‘dérivées des sigillés paléochrétiennes’ (DSP) plate featuring a stag. Drawn by Clem Hayes after Rigoir, Rigoir and Meffre 1973: 207–63, at 255, no. 901	194
6.3	Drawing of a ‘dérivées des sigillés paléochrétiennes’ (DSP) plate featuring stags and a human figure. Drawn by Clem Hayes after Rigoir, Rigoir and Meffre 1973: 207–63, at 254, no. 898	194
6.4	Cernunnos as depicted on the ‘Pilier des Nautes’: Musée de Cluny – Musée National du Moyen Âge, Paris. Inv. Cl. 18604. Photograph: RMN-Grand Palais (Musée de Cluny – Musée National du Moyen Âge)/ Jean-Gilles Berizzi/Gérard Blot	196
6.5	Man dressed as a stag from the <i>Roman d’Alexandre</i> . MS Bodley 264, fol. 70r. Bodleian Libraries, University of Oxford	198
6.6	Animal mummers and dancers from the <i>Roman d’Alexandre</i> . MS Bodley 264, fol. 21v. Bodleian Libraries, University of Oxford	198

Maps

1	Political map of Gaul in the late fourth century CE adapted from <i>CAH XIII</i> (eds. A Cameron and P. Garnsey), pp. 18–19	page xii
2	Arles and environs (E. Intagliata). Sources: Natural Earth, Shuttle Radar Topography Mission (SRTM), Digital Atlas of Roman and Medieval Civilisations (DARMC)	xiii
3	Plan of Arles in the fifth century (M. Heijmans, Centre national de la recherche scientifique (CNRS))	xiv
4	Plan of Arles in the sixth century (M. Heijmans, Centre national de la recherche scientifique (CNRS))	xv
5	The region with Christian sites and centres highlighted (E. Intagliata). After Codou 2005, fig. 5: 86	xvi
6	The environs of the Étang de Berre in the fifth and sixth centuries CE (reproduced from <i>De la Gaule méditerranéenne à la Gaule centrale: Paysages et peuplements à l'Âge du Fer et à l'époque romaine. Archéologie et paléoenvironnement des campagnes de Provence et d'Auvergne</i> . Mémoire d'habilitation à diriger les recherches, Aix-en-Provence, Université de Provence, 2004: 295 p., 46 fig.)	xvii

Acknowledgements

This is a book that has taken far longer to write than I ever could have envisaged, and in its course I have incurred many debts to many people.

At the University of Edinburgh I am lucky to have fantastic colleagues in the Classics department but I owe special thanks to Louise Blanke, Niels Gaul, Gavin Kelly, Calum Maciver, Richard Rawles, Ben Russell and Eberhard Sauer for various pieces of assistance and advice. I am also very fortunate in my colleagues in the wider School of History, Classics and Archaeology, especially among the medievalists: Cordelia Beattie, Tom Brown, Zubin Mistry and Rick Sowerby, as well as my corridor mates, Stephen Bowd and Esther Mijers. I would also like to mention the members of the Centre for Late Antique, Islamic and Byzantine Studies and, of course, the many fine students who have studied both late antiquity and popular culture with me over the years.

Outside Edinburgh I am especially grateful to the generosity of Lisa Bailey, David Frankfurter, Simon Loseby and Jeroen Wijnendaele, who read parts of the manuscript and gave excellent advice. Thanks are also due to Cyril Courrier, Guy Halsall, Marc Heijmans, Emanuele Intagliata, Bill Klingshirn, Polly Low, Dunstan Lowe, Julio Magalhães de Oliveira, Tina Sessa and Frédéric Trément, and special gratitude is due to Caroline Nicholson who gave me her personal collection of books on southern Gaul. I continue to find the community of late antique scholars an excellent place to call home but am also appreciative of the early medievalists who are welcoming to an eternal interloper.

Bits of this book have been presented over the years in a variety of settings beyond Edinburgh – Budapest, Cambridge, New Haven, Oxford, São Paulo, St Andrews and Tvärminne – and the ensuing discussions have been very helpful as well as enjoyable.

It is not always easy to write a book about the south of France while based in Scotland. I am very grateful to the wonderfully efficient Interlibrary Loans department at Edinburgh University Library and the

Acknowledgements

ix

ever-patient Hellenic and Roman Library at the Institute of Classical Studies. Thanks too are due to the libraries at the Musée Départemental Arles Antique and at the Maison Méditerranéenne des Sciences de l'Homme in Aix-en-Provence.

Funding from the Carnegie Trust for the Universities of Scotland and from the School of History, Classics and Archaeology supported early phases of the research. Nearly as far back in the mists of time I wrote the larger part of the manuscript thanks to a British Academy Mid-Career Fellowship for 2016–17. More recently, the School of History, Classics and Archaeology funded expensive image reproduction rights. I am very grateful for this financial support and the help of the Research Office. Thanks too to the Philadelphia Museum of Art.

Michael Sharp has again been both judicious and extremely patient, including during the long hiatus when I was head of department during a global pandemic and the manuscript was all but forgotten; Katie Idle has been exceedingly helpful, as have all involved. My readers for Cambridge University Press were exceptionally perspicacious, and their comments have greatly improved this text, but I remain entirely responsible for its remaining deficiencies.

Thanks to my family are left until last, but are certainly not least. Alan Grig accompanied me on two memorable research trips to Provence; Mary and Peter Hayes kindly came to stay with the rest of the family while I was gone. My children, Rosa, Clem and Frieda Hayes, at one point claimed to think that I was writing a book on 'late antique pedants', but they did like the carousel at Arles. Hamish helpfully sat on every printout available to him. The most important thank you, once more, goes to Damian.

Abbreviations

Abbreviations of ancient authors and texts are as per the *Oxford Classical Dictionary*, 4th edition, where available. Abbreviations of late antique and early medieval authors and texts have been minimized to avoid ambiguity, with the full title given at the first mention. See References for full details of texts and editions.

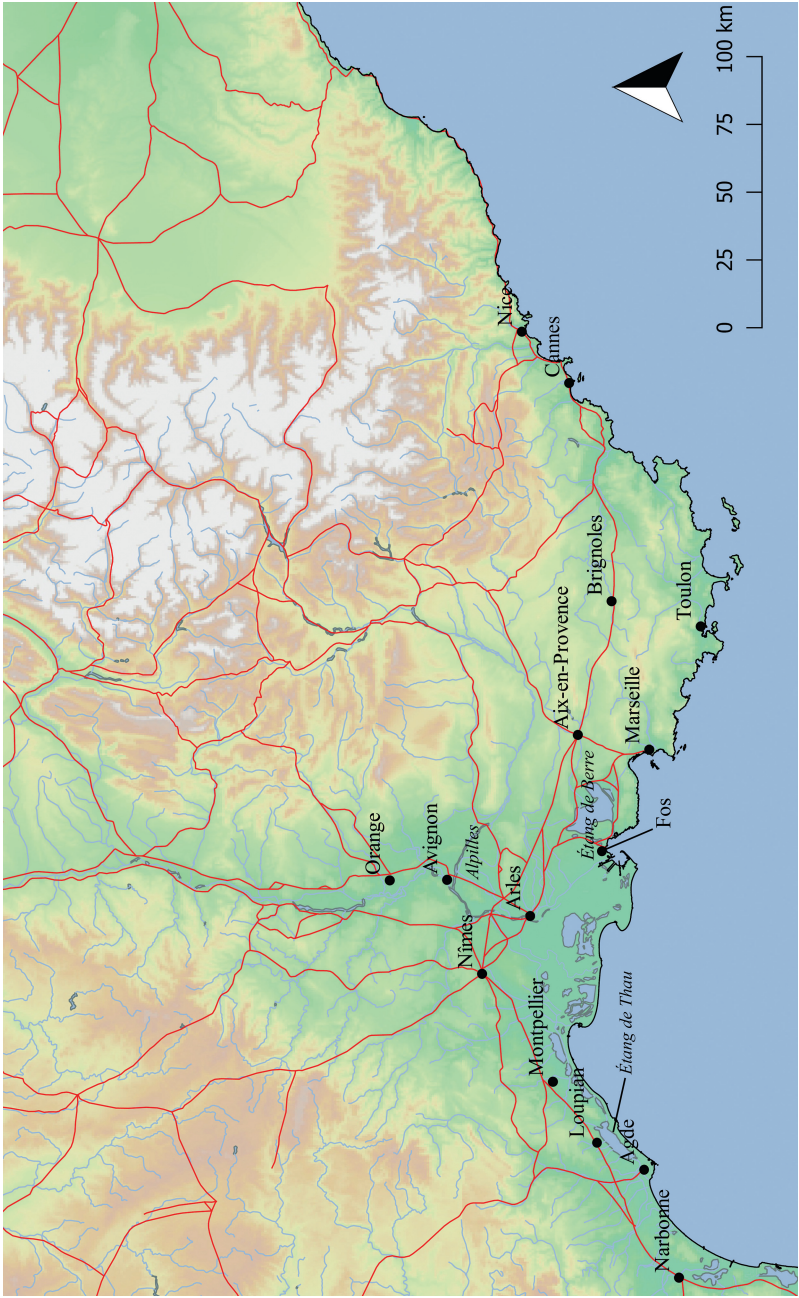
AA	<i>Auctores Antiquissimi</i>
AE	<i>L'Année Epigraphique</i>
ALA	C. Roueché, <i>Aphrodisias in Late Antiquity: The Late Roman and Byzantine Inscriptions</i> , revised 2nd edition
AS	<i>Acta Sanctorum</i>
CAG	<i>Carte archéologique de la Gaule</i>
CAH	<i>Cambridge Ancient History</i>
Capit.	<i>Capitularia regum Francorum</i>
CCSL	<i>Corpus Christianorum Series Latina</i>
CIL	<i>Corpus Inscriptionum Latinarum</i>
CJ	<i>Codex Justinianus</i>
CLE	<i>Carmina Latina Epigraphica</i>
Conc.	<i>Concilia</i>
CSEL	<i>Corpus Scriptorum Ecclesiasticorum Latinorum</i>
CTh	<i>Codex Theodosianus</i>
Ep.	<i>Epistulae</i>
IG	<i>Inscriptiones Graecae</i>
MGH	<i>Monumenta Germaniae Historica</i>
Morin	G. Morin (ed.), <i>Sancti Caesaris episcopi Arelatensis Opera Omnia nunc primum in unum collecta. Sermones</i> , 2 volumes. Maredsous, 1937–42
NJ	<i>Novellae Justiniani</i>
OED	<i>Oxford English Dictionary</i>
PG	<i>Patrologia Cursus Completus, series Graeca</i>

List of Abbreviations xi

<i>PL</i>	<i>Patrologia Cursus Completus, series Latina</i>
<i>PLRE II</i>	A. H. Martin Jones, J. R. Martindale and J. Morris, <i>Prosopography of the Later Roman Empire, Volume II AD 395–527</i> . Cambridge, 1980
<i>SC</i>	<i>Sources Chrétiennes</i>
<i>SRM</i>	<i>Scriptores Rerum Merovingicarum</i>
<i>TCG</i>	<i>Topographie chrétienne des cités de la Gaule</i>
<i>TLL</i>	<i>Thesaurus Linguae Latinae</i>



Map 1 Political map of Gaul in the late fourth century CE adapted from *CAH XIII* (eds. A. Cameron and P. Garnsey), pp. 18–19.



Map 2 Arles and environs (E. Intagliata). Sources: Natural Earth, Shuttle Radar Topography Mission (SRTM), Digital Atlas of Roman and Medieval Civilisations (DARMC).

Cambridge University Press & Assessment

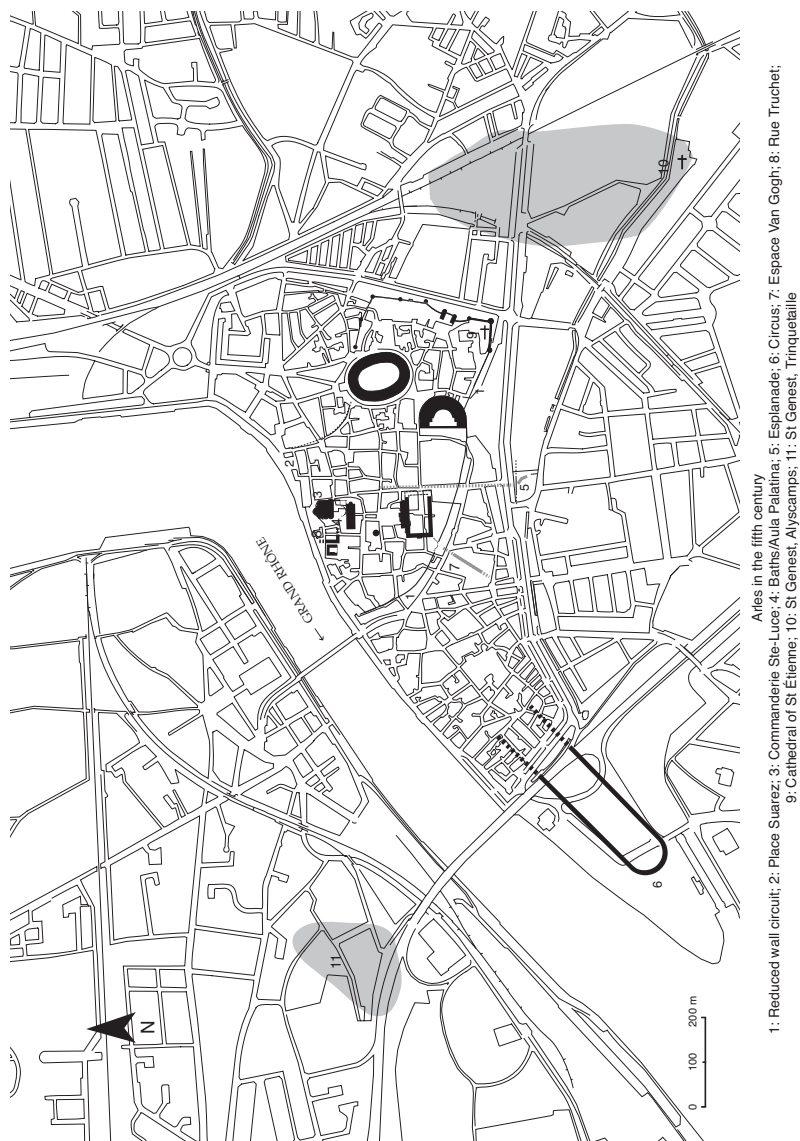
978-1-108-49144-0 — Popular Culture and the End of Antiquity in Southern Gaul,

c. 400–550

Lucy Grig

Frontmatter

[More Information](#)



Map 3 Plan of Arles in the fifth century (M. Heijmans, Centre national de la recherche scientifique (CNRS)).

Cambridge University Press & Assessment

978-1-108-49144-0 — Popular Culture and the End of Antiquity in Southern Gaul,

c. 400–550

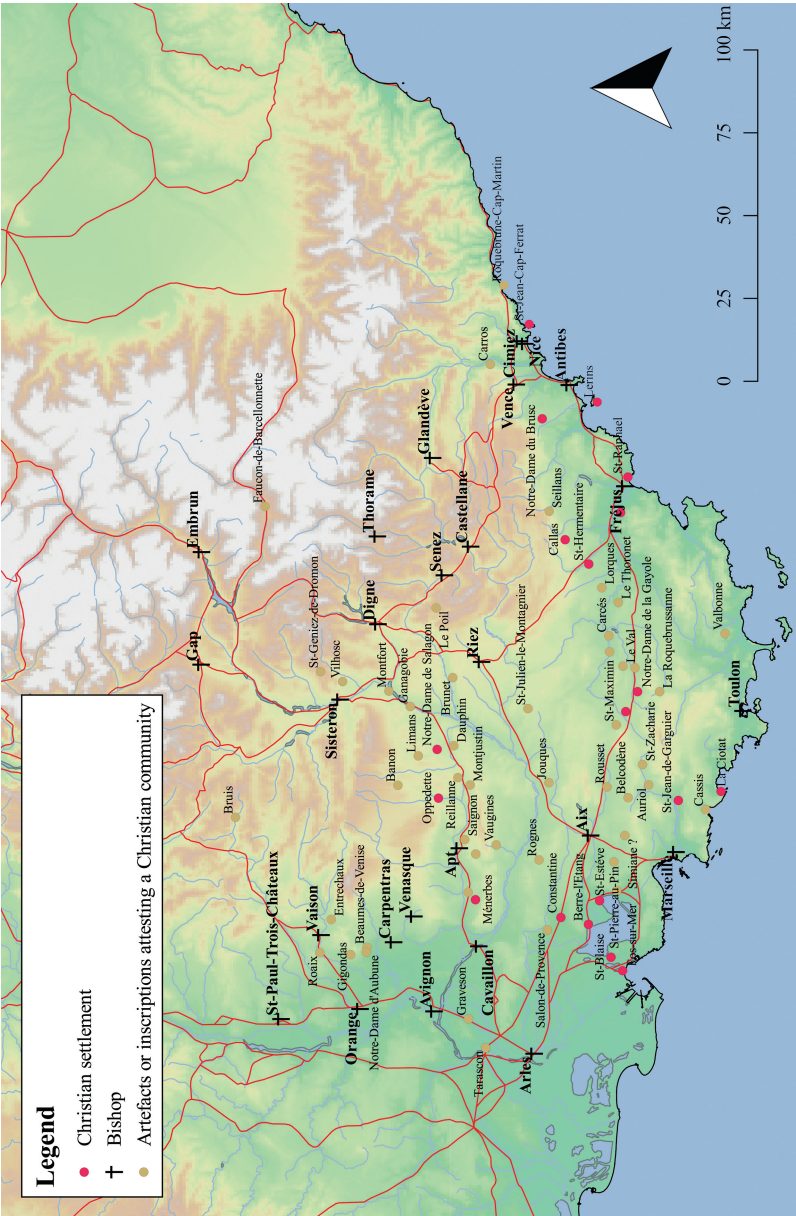
Lucy Grig

Frontmatter

[More Information](#)



Map 4 Plan of Arles in the sixth century (M. Heijmans, Centre national de la recherche scientifique (CNRS)).



Map 5 The region with Christian sites and centres highlighted (E. Intagliata). After Codou 2005, fig. 5; 86.

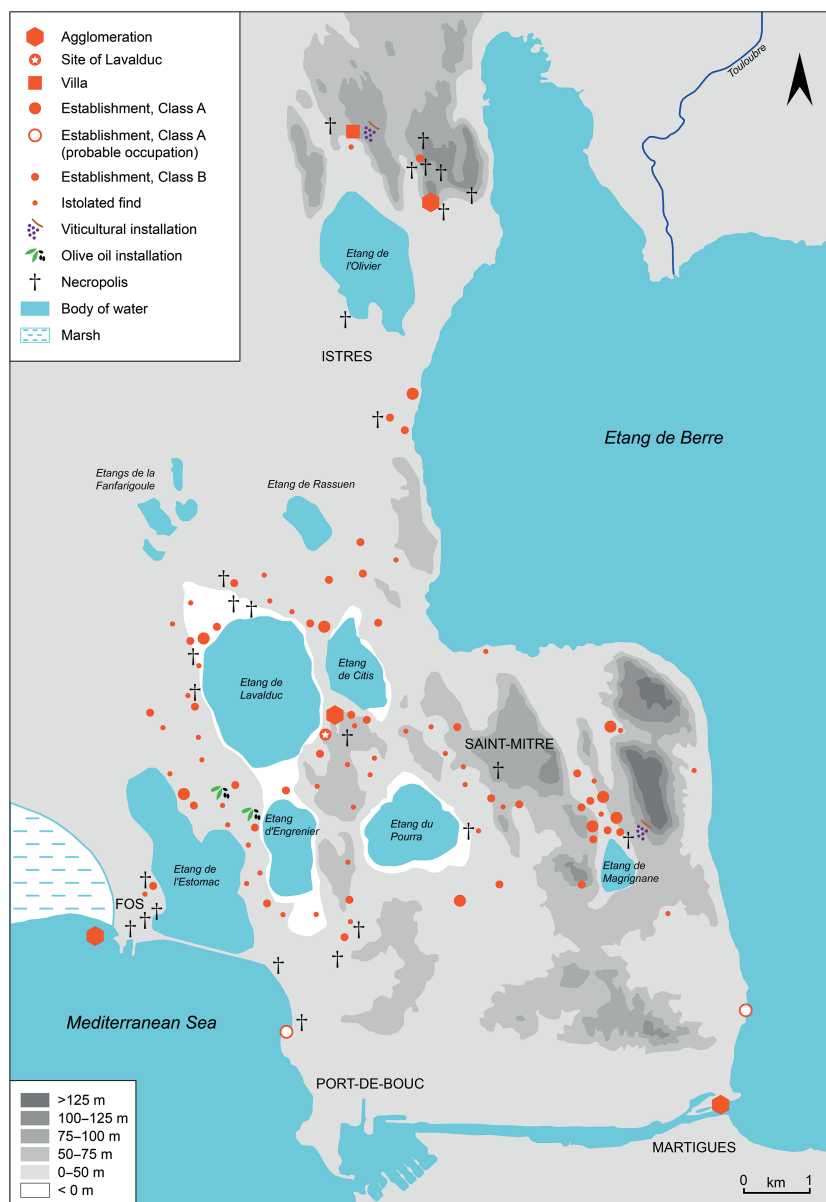
Cambridge University Press & Assessment

978-1-108-49144-0 — Popular Culture and the End of Antiquity in Southern Gaul,

c. 400–550

Lucy Grig

Frontmatter

[More Information](#)

Map 6 The environs of the Étang de Berre in the fifth and sixth centuries CE (reproduced from *De la Gaule méditerranéenne à la Gaule centrale: Paysages et peuplements à l'Âge du Fer et à l'époque romaine. Archéologie et paléoenvironnement des campagnes de Provence et d'Auvergne. Mémoire d'habilitation à diriger les recherches*, Aix-en-Provence, Université de Provence, 2004: 295 p., 46 fig.)