

## CAMBRIDGE LIBRARY COLLECTION

*Books of enduring scholarly value*

### **Botany and Horticulture**

Until the nineteenth century, the investigation of natural phenomena, plants and animals was considered either the preserve of elite scholars or a pastime for the leisured upper classes. As increasing academic rigour and systematisation was brought to the study of 'natural history', its subdisciplines were adopted into university curricula, and learned societies (such as the Royal Horticultural Society, founded in 1804) were established to support research in these areas. A related development was strong enthusiasm for exotic garden plants, which resulted in plant collecting expeditions to every corner of the globe, sometimes with tragic consequences. This series includes accounts of some of those expeditions, detailed reference works on the flora of different regions, and practical advice for amateur and professional gardeners.

### **The Trees of Great Britain and Ireland**

Although without formal scientific training, Henry John Elwes (1846–1922) devoted his life to natural history. He had studied birds, butterflies and moths, but later turned his attention to collecting and growing plants. Embarking on his most ambitious project in 1903, he recruited the Irish dendrologist Augustine Henry (1857–1930) to collaborate with him on this well-illustrated work. Privately printed in seven volumes between 1906 and 1913, it covers the varieties, distribution, history and cultivation of tree species in the British Isles. The strictly botanical parts were written by Henry, while Elwes drew on his extensive knowledge of native and non-native species to give details of where remarkable examples could be found. Each volume contains photographic plates as well as drawings of leaves and buds to aid identification. The species covered in Volume 7 (1913) include lime, box, willow, poplar and elm. The work's index appeared separately in 1913 but is now incorporated in this volume.

Cambridge University Press has long been a pioneer in the reissuing of out-of-print titles from its own backlist, producing digital reprints of books that are still sought after by scholars and students but could not be reprinted economically using traditional technology. The Cambridge Library Collection extends this activity to a wider range of books which are still of importance to researchers and professionals, either for the source material they contain, or as landmarks in the history of their academic discipline.

Drawing from the world-renowned collections in the Cambridge University Library and other partner libraries, and guided by the advice of experts in each subject area, Cambridge University Press is using state-of-the-art scanning machines in its own Printing House to capture the content of each book selected for inclusion. The files are processed to give a consistently clear, crisp image, and the books finished to the high quality standard for which the Press is recognised around the world. The latest print-on-demand technology ensures that the books will remain available indefinitely, and that orders for single or multiple copies can quickly be supplied.

The Cambridge Library Collection brings back to life books of enduring scholarly value (including out-of-copyright works originally issued by other publishers) across a wide range of disciplines in the humanities and social sciences and in science and technology.

# The Trees of Great Britain and Ireland

VOLUME 7

HENRY JOHN ELWES  
AUGUSTINE HENRY



Cambridge University Press  
978-1-108-06938-0 - The Trees of Great Britain and Ireland: Volume 7  
Henry John Elwes and Augustine Henry  
Frontmatter  
[More information](#)

---

**CAMBRIDGE**  
UNIVERSITY PRESS

University Printing House, Cambridge, CB2 8BS, United Kingdom

Published in the United States of America by Cambridge University Press, New York

Cambridge University Press is part of the University of Cambridge.  
It furthers the University's mission by disseminating knowledge in the pursuit of  
education, learning and research at the highest international levels of excellence.

[www.cambridge.org](http://www.cambridge.org)

Information on this title: [www.cambridge.org/9781108069380](http://www.cambridge.org/9781108069380)

© in this compilation Cambridge University Press 2014

This edition first published 1913  
This digitally printed version 2014

ISBN 978-1-108-06938-0 Paperback

This book reproduces the text of the original edition. The content and language reflect  
the beliefs, practices and terminology of their time, and have not been updated.

Cambridge University Press wishes to make clear that the book, unless originally published  
by Cambridge, is not being republished by, in association or collaboration with, or  
with the endorsement or approval of, the original publisher or its successors in title.

Cambridge University Press  
978-1-108-06938-0 - The Trees of Great Britain and Ireland: Volume 7  
Henry John Elwes and Augustine Henry  
Frontmatter  
[More information](#)

---

# THE TREES OF GREAT BRITAIN AND IRELAND

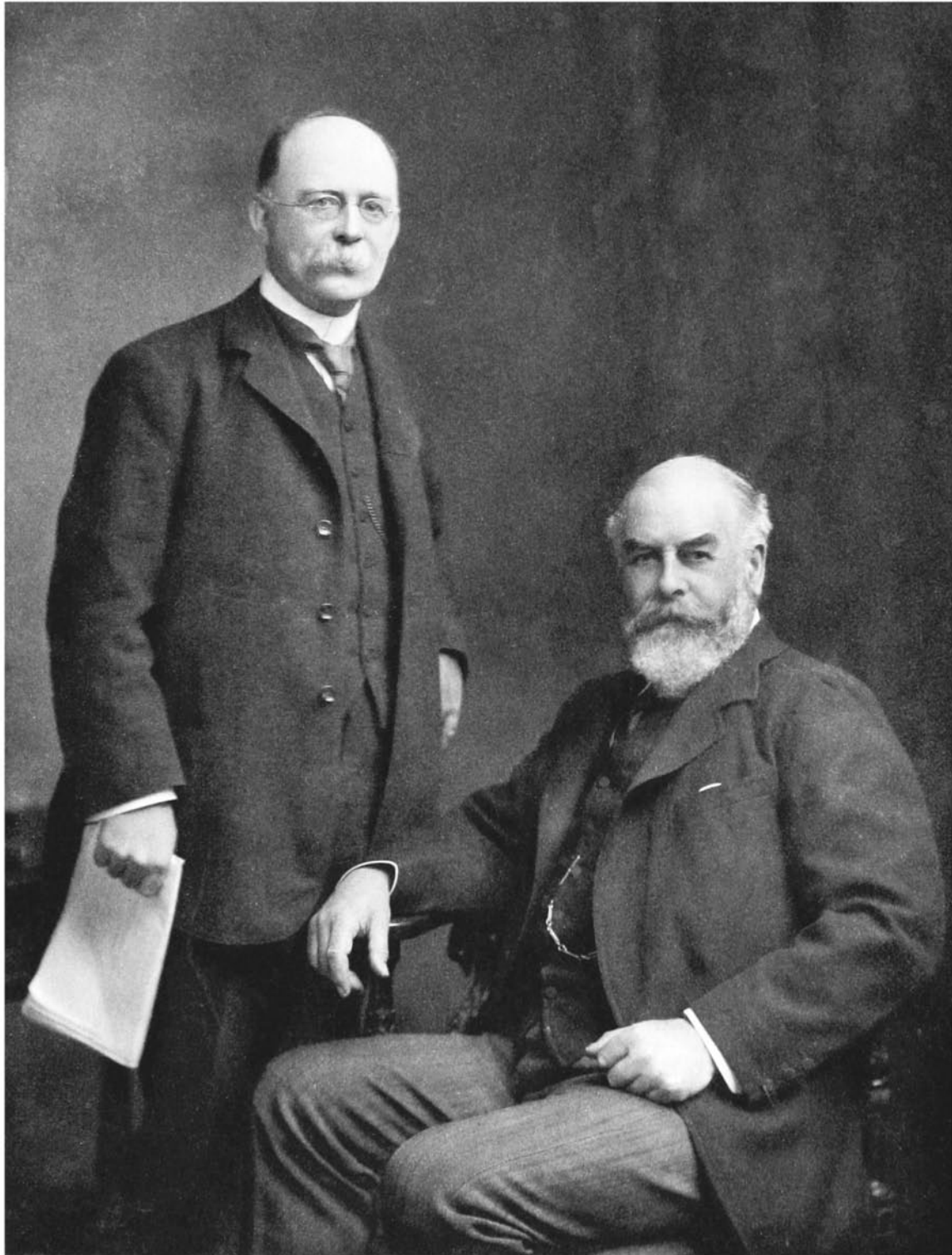
Cambridge University Press  
978-1-108-06938-0 - The Trees of Great Britain and Ireland: Volume 7  
Henry John Elwes and Augustine Henry  
Frontmatter  
[More information](#)

---



Cambridge University Press  
978-1-108-06938-0 - The Trees of Great Britain and Ireland: Volume 7  
Henry John Elwes and Augustine Henry  
Frontmatter  
[More information](#)

---



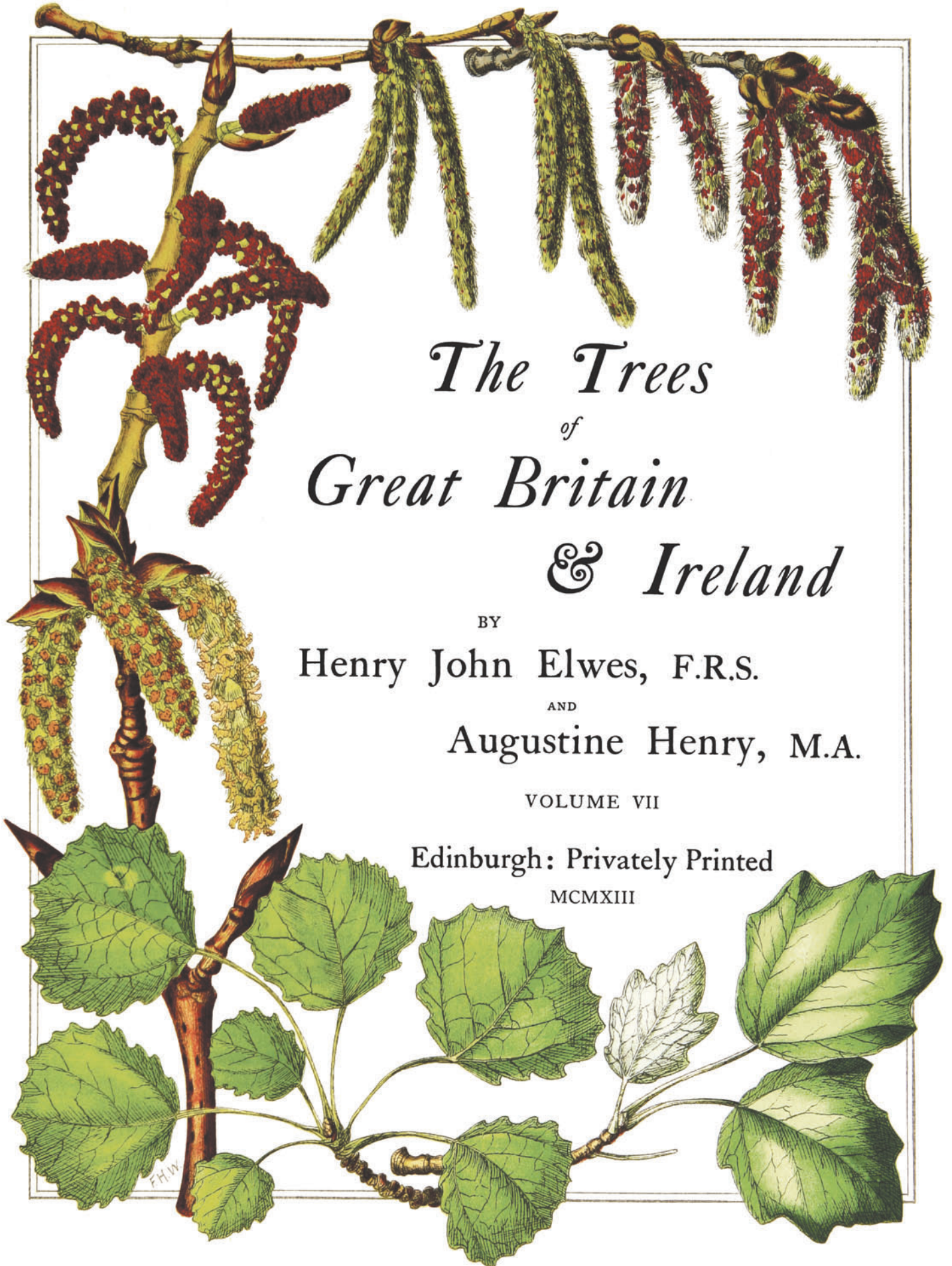
*Photograph by*

*Elliott & Fry, Ltd. 55, Baker St. London W.*

A. HENRY

H. J. ELWES





*The Trees*  
*of*  
*Great Britain*  
*& Ireland*

BY  
Henry John Elwes, F.R.S.  
AND  
Augustine Henry, M.A.

VOLUME VII

Edinburgh: Privately Printed  
MCMXIII

Cambridge University Press  
978-1-108-06938-0 - The Trees of Great Britain and Ireland: Volume 7  
Henry John Elwes and Augustine Henry  
Frontmatter  
[More information](#)

---

## CONTENTS

	PAGE
LIST OF ILLUSTRATIONS . . . . .	vii
TILIA . . . . .	1653
TILIA CORDATA, SMALL-LEAVED LIME . . . . .	1656
TILIA PLATYPHYLLOS, LARGE-LEAVED LIME . . . . .	1661
TILIA VULGARIS, COMMON LIME . . . . .	1664
TILIA EUCHLORA . . . . .	1674
TILIA TOMENTOSA, WHITE LIME . . . . .	1675
TILIA PETIOLARIS, WEEPING WHITE LIME . . . . .	1677
TILIA MONGOLICA . . . . .	1679
TILIA PAUCICOSTATA . . . . .	1680
TILIA OLIVERI . . . . .	1681
TILIA MANDSHURICA . . . . .	1682
TILIA MAXIMOWICZIANA . . . . .	1683
TILIA MIQUELIANA . . . . .	1684
TILIA AMERICANA, AMERICAN LIME, BASS-WOOD . . . . .	1685
TILIA HETEROPHYLLA . . . . .	1688
TILIA MICHAUXII . . . . .	1689
TRACHYCARPUS . . . . .	1690
TRACHYCARPUS FORTUNEI, CHUSAN PALM . . . . .	1690
ACANTHOPANAX . . . . .	1694
ACANTHOPANAX RICINIFOLIUM . . . . .	1694
ACACIA . . . . .	1697
ACACIA DEALBATA, SILVER WATTLE . . . . .	1697
ACACIA MELANOXYLON, BLACKWOOD . . . . .	1699
LAURELIA . . . . .	1700
LAURELIA SERRATA . . . . .	1701
ILEX . . . . .	1702
ILEX AQUIFOLIUM, COMMON HOLLY . . . . .	1704
BUXUS . . . . .	1721
BUXUS SEMPERVIRENS, COMMON BOX . . . . .	1724
CRATÆGUS . . . . .	1731

## iv The Trees of Great Britain and Ireland

	PAGE
CRATÆGUS MONOGYNA, HAWTHORN, WHITETHORN . . . . .	1733
CRATÆGUS OXYACANTHA, HAWTHORN, WHITEHORN . . . . .	1739
SALIX . . . . .	1743
SALIX CAPREA, SALLOW, GOAT WILLOW . . . . .	1745
SALIX PENTANDRA, BAY WILLOW . . . . .	1747
SALIX BABYLONICA, WEeping WILLOW . . . . .	1749
SALIX FRAGILIS, CRACK WILLOW . . . . .	1754
SALIX ALBA, WHITE WILLOW . . . . .	1759
SALIX CÆRULEA, CRICKET-BAT WILLOW . . . . .	1763
SALIX VITELLINA, GOLDEN WILLOW . . . . .	1768
POPULUS . . . . .	1770
POPULUS ALBA, WHITE POPLAR . . . . .	1777
POPULUS CANESCENS, GREY POPLAR . . . . .	1780
POPULUS TOMENTOSA . . . . .	1786
POPULUS TREMULA, ASPEN . . . . .	1787
POPULUS TREMULOIDES, AMERICAN ASPEN . . . . .	1791
POPULUS GRANDIDENTATA . . . . .	1792
POPULUS SIEBOLDII . . . . .	1794
POPULUS FREMONTII . . . . .	1794
POPULUS NIGRA, BLACK POPLAR . . . . .	1795
POPULUS MONILIFERA, CANADIAN BLACK POPLAR . . . . .	1807
POPULUS ANGULATA, CAROLINA POPLAR . . . . .	1810
POPULUS SEROTINA, BLACK ITALIAN POPLAR . . . . .	1816
POPULUS REGENERATA . . . . .	1824
POPULUS EUGENEI . . . . .	1826
POPULUS MARILANDICA . . . . .	1828
POPULUS HENRYANA . . . . .	1829
POPULUS ROBUSTA . . . . .	1829
POPULUS LLOYDII . . . . .	1830
POPULUS ANGUSTIFOLIA . . . . .	1831
POPULUS BALSAMIFERA, BALSAM POPLAR . . . . .	1832
POPULUS CANDICANS, ONTARIO POPLAR . . . . .	1834
POPULUS TRICHOCARPA, WESTERN BALSAM POPLAR . . . . .	1836
POPULUS MAXIMOWICZII . . . . .	1838
POPULUS SIMONII . . . . .	1839
POPULUS TRISTIS . . . . .	1840
POPULUS SUAVEOLENS . . . . .	1841
POPULUS LAURIFOLIA . . . . .	1842
POPULUS LASIOCARPA . . . . .	1846
ULMUS . . . . .	1847

## Contents

	v
	PAGE
ULMUS PEDUNCULATA, EUROPEAN WHITE ELM . . . . .	1851
ULMUS AMERICANA, AMERICAN WHITE ELM . . . . .	1855
ULMUS RACEMOSA, ROCK ELM . . . . .	1860
ULMUS FULVA, SLIPPERY ELM . . . . .	1862
ULMUS MONTANA, WYCH ELM . . . . .	1864
ULMUS VEGETA, HUNTINGDON ELM, CHICHESTER ELM . . . . .	1879
ULMUS MAJOR, DUTCH ELM . . . . .	1883
ULMUS NITENS, SMOOTH-LEAVED ELM . . . . .	1887
ULMUS MINOR, GOODYER'S ELM . . . . .	1901
ULMUS CAMPESTRIS, ENGLISH ELM . . . . .	1903
ULMUS JAPONICA . . . . .	1923
ULMUS ALATA, WAHOO, WINGED ELM . . . . .	1924
ULMUS CRASSIFOLIA . . . . .	1925
ULMUS PUMILA . . . . .	1926
ULMUS PARVIFOLIA . . . . .	1928
KOELREUTERIA . . . . .	1930
KOELREUTERIA PANICULATA . . . . .	1932

Cambridge University Press  
978-1-108-06938-0 - The Trees of Great Britain and Ireland: Volume 7  
Henry John Elwes and Augustine Henry  
Frontmatter  
[More information](#)

---

## ILLUSTRATIONS

Portrait of the Authors . . . . .	<i>Frontispiece</i>
	PLATE No.
Small-leaved Lime at Sprowston, Norwich . . . . .	372
White Lime at Albury . . . . .	373
Weeping White Lime at Hatherop Castle . . . . .	374
Chusan Palm at Lamorran . . . . .	375
Acacia dealbata at Derreen . . . . .	376
Holly at Gordon Castle . . . . .	377
Whitethorn at Hethel . . . . .	378
Weeping Willow at Cheltenham . . . . .	379
White Willow at Haverholme . . . . .	380
Cricket-bat Willow at Hertford . . . . .	381
Grey Poplar at Colesborne . . . . .	382
Female Lombardy Poplar in Brunswick . . . . .	383
Carolina Poplar at Danny Park . . . . .	384
Fastigate Black Poplars in Belgium . . . . .	385
Black Italian Poplar at Belton . . . . .	386
Balsam Poplar at Bute House, Petersham . . . . .	387
Western Balsam Poplar in Vancouver Island . . . . .	388
European White Elm at Syon . . . . .	389
European White Elm at Ugbrooke . . . . .	390
American White Elm in Massachusetts . . . . .	391
American White Elm at Hargham . . . . .	392
Weeping Wych Elm at Glasnevin . . . . .	393
Wych Elm at Studley Royal . . . . .	394
Huntingdon Elm at Magdalen College, Oxford . . . . .	395
Elms in Kensington Gardens . . . . .	396
Cornish Elms at Coldrenick . . . . .	397
Wheatley Elm at Richmond . . . . .	398
Smooth-leaved Elm at Sharpham . . . . .	399
Wych Elm at Cassiobury . . . . .	400



## viii The Trees of Great Britain and Ireland

	PLATE No.
Smooth-leaved Elm at Briggins . . . . .	401
Smooth-leaved Elm at Saling . . . . .	402
Goodyer's Elm at Weston Birt . . . . .	403
English Elm at Powderham . . . . .	404
English Elms at Well Vale . . . . .	405
Fastigate Beech at Dawyck . . . . .	406
Tilia ; leaves, etc. . . . .	407
Populus ; leaves, etc. . . . .	408
Populus ; leaves, etc. . . . .	409
Populus ; leaves, etc. . . . .	410
Ulmus ; leaves, etc. . . . .	411
Ulmus ; leaves, etc. . . . .	412