

CAMBRIDGE LIBRARY COLLECTION

Books of enduring scholarly value

Egyptology

The large-scale scientific investigation of Egyptian antiquities by Western scholars began as an unintended consequence of Napoleon's invasion of Egypt during which, in 1799, the Rosetta Stone was discovered. The military expedition was accompanied by French scholars, whose reports prompted a wave of enthusiasm that swept across Europe and North America resulting in the Egyptian Revival style in art and architecture. Increasing numbers of tourists visited Egypt, eager to see the marvels being revealed by archaeological excavation. Writers and booksellers responded to this growing interest with publications ranging from technical site reports to tourist guidebooks and from children's histories to theories identifying the pyramids as repositories of esoteric knowledge. This series reissues a wide selection of such books. They reveal the gradual change from the 'tomb-robbing' approach of early excavators to the highly organised and systematic approach of Flinders Petrie, the 'father of Egyptology', and include early accounts of the decipherment of the hieroglyphic script.

Gizeh and Rifeh ~ Heliopolis, Kafr Ammar and Shurafa

A pioneering Egyptologist, Sir William Matthew Flinders Petrie (1853–1942) excavated over fifty sites and trained a generation of archaeologists. The two excavation reports now reissued here together were written in collaboration with other experts. The first, published in 1907, describes digs at Giza and Rifeh, including the discovery of the Tomb of the Two Brothers, a well-preserved Middle Kingdom burial. The second report, co-authored with Ernest Mackay (1880–1943) and published in 1915, covers work at Heliopolis, Kafr Ammar and Shurafa. Petrie and his collaborators describe how they came to make their discoveries, shedding light on developing archaeological practices used in the early twentieth century. Each report includes a section of valuable illustrative material, such as photographs and drawings of artefacts. Petrie wrote prolifically throughout his long career, and a great many of his other publications – for both specialists and non-specialists – are also reissued in this series.

Cambridge University Press
978-1-108-06610-5 - Gizeh and Rifeh ~ Heliopolis, Kafr Ammar and Shurafa
W. M. Flinders Petrie and Ernest Mackay
Frontmatter
[More information](#)

Cambridge University Press has long been a pioneer in the reissuing of out-of-print titles from its own backlist, producing digital reprints of books that are still sought after by scholars and students but could not be reprinted economically using traditional technology. The Cambridge Library Collection extends this activity to a wider range of books which are still of importance to researchers and professionals, either for the source material they contain, or as landmarks in the history of their academic discipline.

Drawing from the world-renowned collections in the Cambridge University Library and other partner libraries, and guided by the advice of experts in each subject area, Cambridge University Press is using state-of-the-art scanning machines in its own Printing House to capture the content of each book selected for inclusion. The files are processed to give a consistently clear, crisp image, and the books finished to the high quality standard for which the Press is recognised around the world. The latest print-on-demand technology ensures that the books will remain available indefinitely, and that orders for single or multiple copies can quickly be supplied.

The Cambridge Library Collection brings back to life books of enduring scholarly value (including out-of-copyright works originally issued by other publishers) across a wide range of disciplines in the humanities and social sciences and in science and technology.

Cambridge University Press
978-1-108-06610-5 - Gizeh and Rifeh ~ Heliopolis, Kafr Ammar and Shurafa
W. M. Flinders Petrie and Ernest Mackay
Frontmatter
[More information](#)

Gizeh and Rifeh
~
Heliopolis, Kafr Ammar
and Shurafa

W.M. FLINDERS PETRIE
ERNEST MACKAY



CAMBRIDGE
UNIVERSITY PRESS

Cambridge University Press
978-1-108-06610-5 - Gizeh and Rifeh ~ Heliopolis, Kafr Ammar and Shurafa
W. M. Flinders Petrie and Ernest Mackay
Frontmatter
[More information](#)

CAMBRIDGE
UNIVERSITY PRESS

University Printing House, Cambridge, CB2 8BS, United Kingdom

Published in the United States of America by Cambridge University Press, New York

Cambridge University Press is part of the University of Cambridge.
It furthers the University's mission by disseminating knowledge in the pursuit of
education, learning and research at the highest international levels of excellence.

www.cambridge.org

Information on this title: www.cambridge.org/9781108066105

© in this compilation Cambridge University Press 2013

This edition first published 1907 and 1915
This digitally printed version 2013

ISBN 978-1-108-06610-5 Paperback

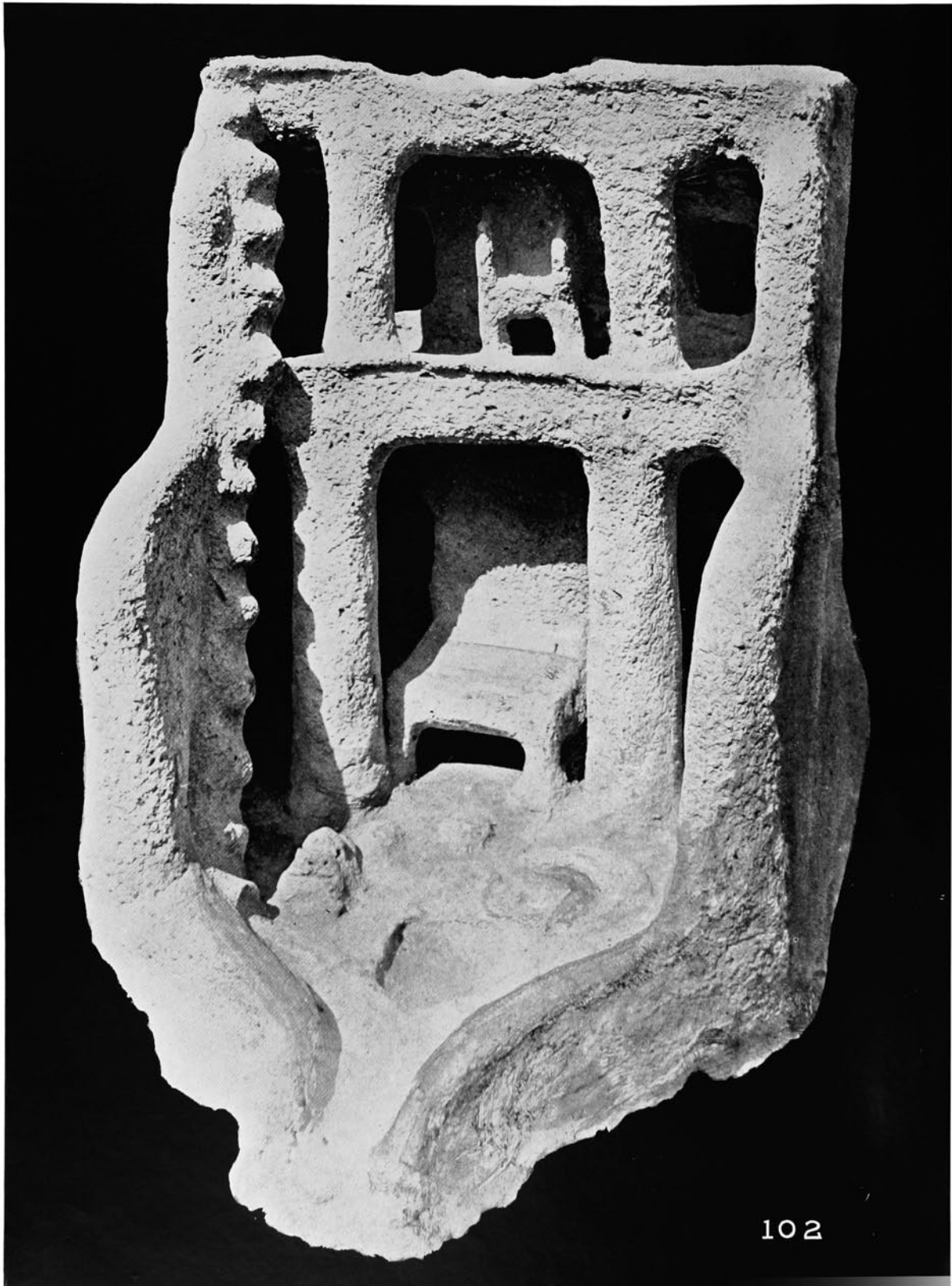
This book reproduces the text of the original edition. The content and language reflect
the beliefs, practices and terminology of their time, and have not been updated.

Cambridge University Press wishes to make clear that the book, unless originally published
by Cambridge, is not being republished by, in association or collaboration with, or
with the endorsement or approval of, the original publisher or its successors in title.

Cambridge University Press
978-1-108-06610-5 - Gizeh and Rifeh ~ Heliopolis, Kafr Ammar and Shurafa
W. M. Flinders Petrie and Ernest Mackay
Frontmatter
[More information](#)

RIFEH. POTTERY SOUL HOUSE. TYPE L IX-XII DYNASTY.

I



102

BRITISH SCHOOL OF ARCHAEOLOGY IN EGYPT
AND EGYPTIAN RESEARCH ACCOUNT
THIRTEENTH YEAR, 1907

GIZEH AND RIFEH

BY
W. M. FLINDERS PETRIE

HON. D.C.L., LL.D., LITT.D., PH.D.
F.R.S., F.B.A., HON. F.S.A. (SCOT.)
MEMBER OF THE ROYAL IRISH ACADEMY
MEMBER OF THE IMPERIAL GERMAN ARCHAEOLOGICAL INSTITUTE
CORRESPONDING MEMBER OF THE SOCIETY OF ANTHROPOLOGY, BERLIN
MEMBER OF THE ROMAN SOCIETY OF ANTHROPOLOGY
MEMBER OF THE SOCIETY OF NORTHERN ANTIQUARIES
MEMBER OF THE AMERICAN PHILOSOPHICAL SOCIETY
EDWARDS PROFESSOR OF EGYPTOLOGY, UNIVERSITY COLLEGE, LONDON

WITH CHAPTERS BY
SIR HERBERT THOMPSON, BART., AND W. E. CRUM

DOUBLE VOLUME

LONDON
SCHOOL OF ARCHAEOLOGY IN EGYPT
UNIVERSITY COLLEGE, GOWER STREET, W.C.
AND
BERNARD QUARITCH
11, GRAFTON STREET, NEW BOND STREET, W.
1907

Cambridge University Press
978-1-108-06610-5 - Gizeh and Rifeh ~ Heliopolis, Kafr Ammar and Shurafa
W. M. Flinders Petrie and Ernest Mackay
Frontmatter
[More information](#)

PRINTED BY
HAZELL, WATSON AND VINEY, LD.,
LONDON AND AYLESBURY.

BRITISH SCHOOL OF ARCHAEOLOGY IN EGYPT, AND EGYPTIAN RESEARCH ACCOUNT

Patron:

THE EARL OF CROMER, G.C.B., G.C.M.G., K.C.S.I., Etc., Etc.

*GENERAL COMMITTEE (*Executive Members)*

LORD AVEBURY	*Prof. ERNEST GARDNER	Sir C. SCOTT MONCRIEFF
WALTER BAILY	Prof. PERCY GARDNER	ROBERT MOND
HENRY BALFOUR	Rt. Hon. Sir G. T. GOLDIE	Prof. MONTAGUE
FREIHERR VON BISSING	Prof. GOWLAND	WALTER MORRISON
Dr. T. G. BONNEY	Mrs. J. R. GREEN	Prof. P. E. NEWBERRY
Rt. Hon. JAMES BRYCE	Dr. A. C. HADDON	Dr. PAGE MAY
Prof. J. B. BURY	JESSE HAWORTH	F. W. PERCIVAL
*SOMERS CLARKE	Dr. A. C. HEADLAM	Dr. PINCHES
EDWARD CLODD	*Sir ROBERT HENSLEY (<i>Chairman</i>)	Dr. G. W. PROTHERO
W. E. CRUM	D. G. HOGARTH	Dr. G. REISNER
Prof. BOYD DAWKINS	Sir H. H. HOWORTH	Sir W. RICHMOND
Prof. S. DILL	Baron A. VON HÜGEL	Prof. F. W. RIDGEWAY
*Miss ECKENSTEIN	Prof. MACALISTER	Mrs. STRONG
Dr. GREGORY FOSTER	Dr. R. W. MACAN	Mrs. TIRARD
Dr. J. G. FRAZER	Prof. MAHAFFY	E. TOWRY WHYTE
ALAN GARDINER	*J. G. MILNE	

Treasurer—*F. G. HILTON PRICE

Honorary Director—Prof. FLINDERS PETRIE

• *Honorary Secretaries*—Mrs. HILDA PETRIE and *Dr. J. H. WALKER.

The need of providing for the training of students is even greater in Egypt than it is in Greece and Italy; and the relation of England to Egypt at present makes it the more suitable that support should be given to a British School in that land. This body is the only such agency, and is also the basis of the excavations of Prof. Flinders Petrie, who has had many students associated with his work in past years. The great enterprise of the excavation of the temples and city of Memphis, which has now been undertaken, promises the most valuable results. But it will necessarily be far more costly than any other work in Egypt, and it cannot be suitably carried out without doubling the present income of the School. Active support is required to ensure the continuance of such work, which depends entirely on personal contributions, and each subscriber receives the annual volume. The antiquities not retained by the Egyptian Government are presented to Public Museums, after the Annual Exhibition, during July, at University College. The accounts are audited by a Chartered Accountant, and published in the Annual Report. Treasurer: F. G. HILTON PRICE, Child's Bank, 1, Fleet Street, E.C.

ADDRESS THE HON. SECRETARY,
 BRITISH SCHOOL IN EGYPT, UNIVERSITY COLLEGE,
 GOWER STREET, LONDON, W.C.

Cambridge University Press
978-1-108-06610-5 - Gizeh and Rifeh ~ Heliopolis, Kafr Ammar and Shurafa
W. M. Flinders Petrie and Ernest Mackay
Frontmatter
[More information](#)

CONTENTS

INTRODUCTION		CHAPTER V	
SECT.	PAGE	THE IXTH—XII TH DYNASTIES. RIFEH.	
1. Work at Gizeh	I	SECT.	PAGE
2. Work at Rifeh	I	24. Age of the cemetery	11
3. Coptic sites	2	25. The rock-tombs	11
CHAPTER I		26. The tomb of Nekht-ankh	12
THE 1 ST DYNASTY. GIZEH.		27. The tomb of Khnumu-hotep	12
4. The discovery of the tomb	2	28. The shoal graves	13
5. The structure of the tomb	2	29. The statuettes and carvings	13
6. The mastaba and graves around	3	30. The alabaster vases	13
7. The stuccoed tomb	3	31. The beads	13
8. The plans of the burials	4	32. The weapons	14
9. The stone vases	5	33. The pottery	14
10. The palettes, tools, and flints	5	CHAPTER VI	
11. The toilet objects and ivories	6	THE SOUL-HOUSES. RIFEH.	
12. The bracelet of hawks	6	34. Position of models	14
13. The measurements	6	35. Origin of models	15
CHAPTER II		36. Imitations of houses	15
THE 1 ^{IND} AND 3 RD DYNASTIES. GIZEH.		37. Date of models	15
14. The re-used tomb	7	38. The types	16
15. The stone vases	7	39. The trays of offerings	16
16. The hill mastaba	7	40. A. Shelter without <i>satah</i>	16
17. Flint, marbles, and copper	7	41. B. Shelter with <i>satah</i>	17
18. The measurements	8	42. C. Hut chamber	17
CHAPTER III		43. D. Chamber with portico	17
THE 4 TH —6 TH DYNASTIES. GIZEH.		44. E. <i>Satah</i> between <i>mulqafs</i>	17
19. The system of tombs	8	45. F. Several chambers	17
20. The inscriptions	9	46. G. <i>Satah</i> across <i>mulqafs</i>	17
CHAPTER IV		47. H. <i>Satah</i> divided in three	17
THE 6 TH DYNASTY. ZARABY AND ZOWYEH.		48. J. Two <i>mulqafs</i> and <i>satahs</i>	17
21. The system of graves	10	49. K. Closed door	18
22. The stone vases and pottery	10	50. L. No <i>mulqafs</i> . Furniture	18
23. The other objects	10	51. M. Closed court	18
		52. N. Stripes on wall	18
		53. Walls and roofs	18
		54. Stairways	19

SECT.	PAGE			
CHAPTER VII				
THE XIIITH—XVITH DYNASTIES. RIFEH.				
55. Windows and doorways	19			
56. Columns	19			
57. The spout and offerings	19			
58. The bins and corn-grinder	19			
59. The furniture	20			
CHAPTER VIII				
THE XVIIITH—XXTH DYNASTIES. RIFEH.				
60. The graves	20			
61. The objects found	20			
62. The pottery	21			
CHAPTER IX				
THE CLASSIFICATION OF THE POTTERY.				
71. The IX th —X th dynasties, Pl. XIII A	24			
72. The X th —XI th dynasties, Pl. XIII B, C	25			
73. The XI th —XII th dynasties, Pl. XIII D	25			
74. Division into classes, XVIII th dynasty	25			
75. Objects found with pottery	26			
76. Cubit decimally divided	26			
77. Tomb of Nekht-ankh	26			
78. Hieratic Papyrus	27			
CHAPTER X				
SAITE AND LATER PERIODS.				
79. Tomb of Thary	28			
80. Burials at Gizeh	29			
81. Demotic inscriptions, Gizeh	29			
82. Greek papyri, Rifeh	29			
83. Coptic excavations	30			
CHAPTER XI				
THE DEMOTIC PAPYRI.				
BY SIR HERBERT THOMPSON, Bart.				
84. Description of papyri	31			
85. Papyri from case A	31			
86. " " B	31			
87. " " C, D	32			
88. " " E	33			
89. " " F, G, H, K.	34			
90. Tabular statement	34			
91. Contract translated	35			
92. Embalming contract	36			
93. Account of ibises, etc.	36			
94. List of cleruchs	37			
95. Fragment of an historical romance	38			
CHAPTER XII				
THE COPTIC MANUSCRIPTS.				
BY W. E. CRUM.				
96. The monastery of S. Apollo	39			
97. Biblical and Apocryphal MSS.	39			
98. Liturgies and Homilies	40			
99. Acta	40			
100. History and aphorisms	41			
101. Geography	41			
102. Dates and officials	41			
103. Taxation	42			
104. Marriage contract	42			
105. Accounts	42			
106. The Dialect	42			
Present position of objects	43			
ADDENDUM on Libyan Inscriptions	44			
INDEX	45			

