



Unit 1: Our Surroundings

Our Earth

Fill in the missing letters and write the names of things marked with an arrow in the picture.

Warm Up

C _ _ O _ _

K _ _

N _ _

N _ _ W

M _ _ _ _ _ N

F _ _ R _ _ T

R _ _ _ K

R _ _ V _ _ R

Our Earth is made up of land and water. In some places, the Earth is flat and plain. In other places, it is raised. In most of the places, there is water. All around the Earth there is air.

Land

Our Earth has different types of land. It has plains, forests, deserts, hills, mountains and valleys.

Plains

Plains are vast areas of flat lands. Many different kinds of crops can grow here. Many people live here. Most cities, towns and villages are built in the plains. Depending on the season, it is either hot or cold in the plains.



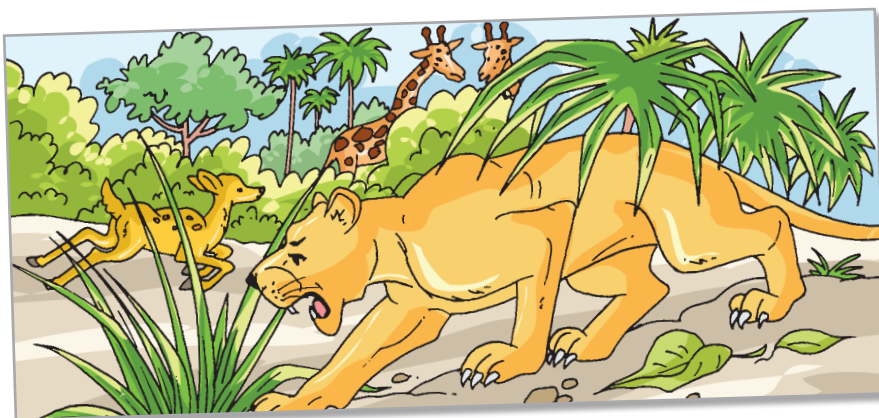
Plains are flat lands

Forests

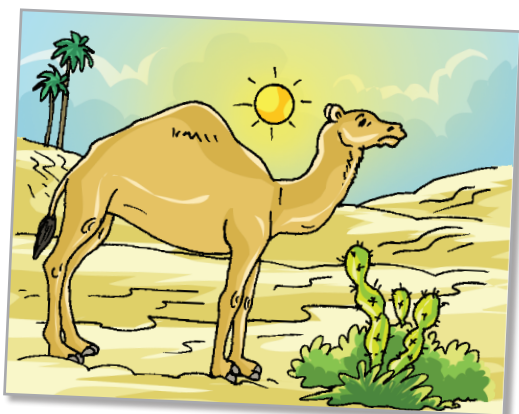
In some places, large parts of land have different types of trees growing close to one another. These are called forests. A large number of wild animals live in forests.

Green Tips

Day-by-day forests are getting smaller and smaller. This is because people are cutting a lot of trees. This should be stopped because trees are very useful to us.



Many wild animals live in the forest



Deserts are dry places

Deserts

The land in some parts of the Earth is very, very dry. It is covered with sand. Such a place is called a desert. Deserts have very little rain and water. Only a few plants can grow in deserts. A few animals like camels are found here. Very few people live in deserts.

Coasts

The land areas near the sea are called coasts. There are sandy beaches near coasts. Many people live in coastal areas. Coconut trees grow very well in coastal areas. Coastal areas are warm and the air is wet. It makes people sweat a lot.



Many coasts have sandy beaches

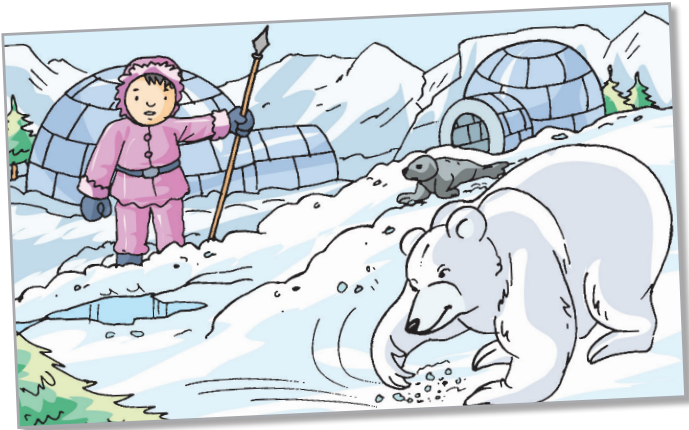
Formative Assessment

Fill in the blanks.

- 1. Most cities and towns are built in the _____.
- 2. Large number of wild animals live in _____.
- 3. Coconut trees are found in _____ areas.

Polar regions

In polar regions, the land is always covered with lots of snow and ice. Very few plants grow in these areas. Only a few animals like polar bears and seals can survive here. People live in houses made of ice slabs called **igloos**. People living in polar regions are called **Eskimos**.



Eskimos live in igloos

Activity

Match the pictures to the places where they are found.

Plains

Coast

Desert

Polar region



Seal



Camel



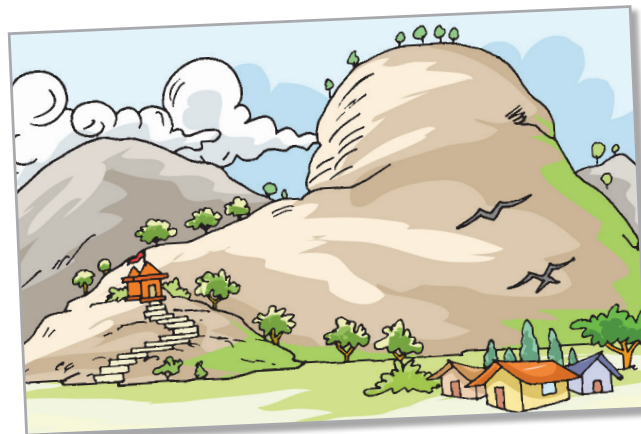
Wheat



Coconut trees

Hills

A hill is a place which is higher than the surrounding land. Hilly areas are generally cool and pleasant. It rains very often in the hills. So, the houses on the hills have sloping roofs to let the rain water flow away easily.



A hill is a high ground



Mountains are very high

Mountains

Mountains are much bigger than hills. Some mountains are rocky. Some are full of forests and animals. Some very high mountains are covered with snow. When snow melts, water starts flowing down the mountains. In this way a river is formed.

Do You Know?

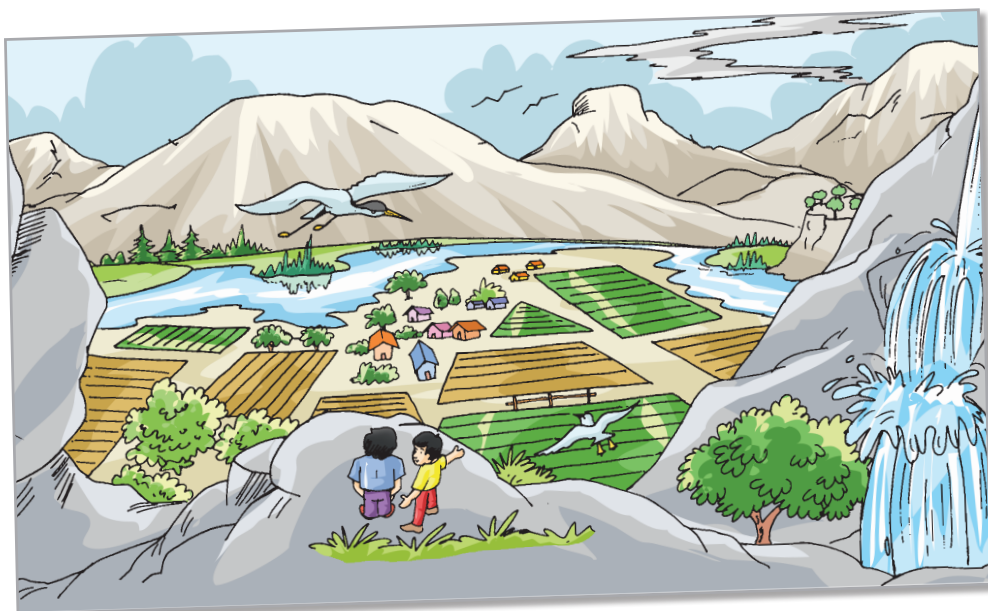
The Himalayas are the highest mountain range on Earth. Mount Everest in the Himalayas is the tallest mountain in the world.

Valleys

A long area of lowland that lies between mountains or hills is called a valley. Valleys are good for farming.

Do You Know?

The polar bear is so strong that it can kill an animal with one blow to the head.



A valley lies between mountains or hills

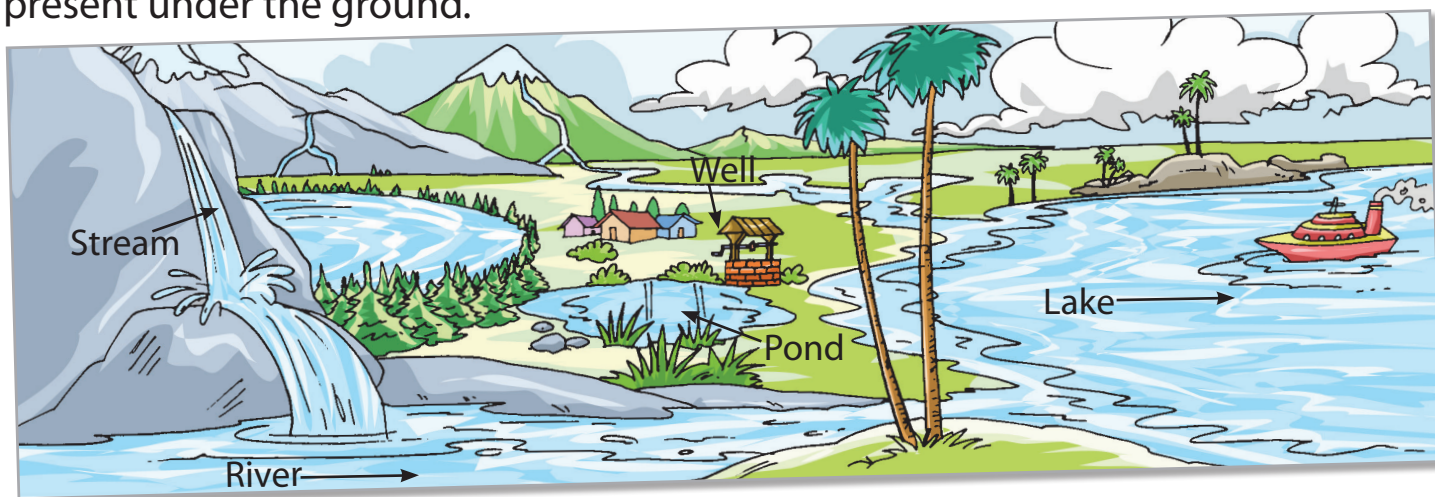
Water

HEALTH & PHYSICAL EDUCATION



A large part of the Earth's surface is filled with water. Water is very important to us. All living things need water.

Most of the water present on the Earth is salt water. It is present in vast water bodies called **oceans** and **seas**. Fresh water, which we can use, is present in **rivers, lakes, streams** and **ponds**. A lot of water is also stored as **ice** and **snow**. Water is also present under the ground.



Different sources of water

Our Earth has many beautiful things. We should not spoil and destroy the water, air, soil, forests and mountains around us. We must protect our Earth.

Formative Assessment

Fill in the blanks.

1. Very few plants grow in _____.
2. The ice houses in which Eskimos live are called _____.
3. The lowland between two _____ is called a valley.

Points to Remember

- Earth is made up of land and water.
- Air surrounds the Earth all around.
- In some places, the land is raised and in some places, the land is low.
- Plains are vast areas of flat lands.
- Deserts are hot and dry lands.
- Polar regions are not suitable for most plants and animals.



New Words

- Crop:** grains, fruits or vegetables grown in large quantity
- Coast:** the land beside the sea
- Season:** the period of the year when one type of weather continues for months
- Slab:** a thick, flat piece of solid substance
- Valley:** a narrow lowland between two mountains or hills



Formative and Summative Assessments

A. Fill in the blanks with the correct option.

- 1. All around the Earth there is _____. land / air
- 2. High lands are called _____. plains / hills
- 3. _____ people live in the plains. Few / Many
- 4. Very few plants grow in a _____. desert / forest
- 5. Many _____ live in forests. people / animals
- 6. On the coasts, the air is _____. dry / wet
- 7. Coconut trees are found near _____ areas. coastal / desert
- 8. Eskimos live in houses made of _____ slabs. cement / ice

B. Tick (✓) the correct answer.

- 1. Vast areas of flat land are called
 - a. plains ☐
 - b. mountains ☐
 - c. coasts. ☐
- 2. Forests have many
 - a. people ☐
 - b. buildings ☐
 - c. trees. ☐
- 3. Deserts have
 - a. heavy rainfall ☐
 - b. less rainfall ☐
 - c. heavy snowfall. ☐

4. Land area near the sea is called a

a. forest

☐

b. coast

☐

c. polar region.

☐
5. Igloos are made of

a. cement

☐

b. straw

☐

c. ice slabs.

☐
6. Polar bears are found in

a. hot places

☐

b. cold places

☐

c. near the beaches.

☐

C. Match the following.

1. plain

2. forest

3. coast

4. desert
- a. land near the sea

b. dry land

c. trees and animals

d. flat land

D. Answer these questions.

1. Why do many people live in the plains?
2. What do you see in a forest?
3. What are deserts?
4. Why do only a few people and animals live in deserts?
5. Why do houses in hilly areas have sloping roofs?
6. Where do you find most of the water on Earth?





HOTS (Higher Order Thinking Skills) questions

What would happen if there were no forests on Earth?

Tasks for Formative Assessment **F.A.**

Task

Guess who I am:

- 1. I cover most of the Earth’s surface. I am _____ .
- 2. I am a house made of ice slabs. I am an _____ .
- 3. I am a very big and very high land. I am a _____ .
- 4. I am a hot and dry place with lots of sand. I am a _____ .
- 5. I am a small high land. I am a _____ .
- 6. I am a lowland between two mountains. I am a _____ .



Project Idea

Making a model of a landscape

Take a cardboard. Make mountains, hills, plains and seas on it with the help of plasticine. Stick cotton on the mountain peaks to show snow. You can use small toys and other household things to show the forests, farms, houses, roads, etc.



Life Skills

Identify features of the place where you live and the name of the water body from where you get water. Stick photograph of these places.

Teacher’s Notes:

- Different landforms can be shown with the help of 3-dimensional visuals.
- Discuss with the students how Earth is the source of resources we use in everyday life.
- Talk to the students about practices of effective management of Earth’s resources.



Unit 2: Plant Life

A Green World

Tick (✓) the pictures that are parts of a plant.

Warm Up



Plants are living things. Some plants grow on land and some grow in water. They are of different shapes and sizes.

Trees

Trees are big plants with a **strong, thick and woody main stem**. The stem is also called the **trunk**. In most trees, the trunk bears many small stems called branches. The **branches** bear leaves, flowers and fruits. Trees have **roots** which grow deep into the soil in search of water.



Mango tree



Peepal tree



Pine tree



Most trees have branches that are spread out. Some trees like coconut palms do not have branches.

Trees live for many years. Some trees, like the banyan tree, can live for hundreds of years.



Coconut tree



Banyan tree



Do You Know?

The largest banyan tree in the world is the Great Banyan Tree in the Botanical Gardens in Kolkata.

Shrubs

Shrubs are smaller than trees. They do not have a trunk. They have **thin, woody stems** that grow from near the ground. They have many branches. Shrubs live only for a few years.



Rose



Jasmine



Cotton



Coriander



Spinach



Mint

Herbs

Herbs are very small and delicate plants. They have **soft** and **thin stems**. They are always green. Most herbs live only for one season. We get most of our vegetables from herbs.

Formative Assessment

Name the following.

- 1. Plants with strong, thick and woody stems
- 2. Plants with thin, woody stems
- 3. Plants with thin, soft stems
