

Cambridge University Press
978-0-521-84892-3 - Western Illuminated Manuscripts: A Catalogue of the Collection in Cambridge University Library
Paul Binski and Patrick Zutshi
Excerpt
[More information](#)

THE CATALOGUE

BRITISH ISLES

(See also nos. 289, 290, 291, 294, 306 (all s. xii–xiii), 433 (s. xv))

1. Ll.1.10 see also Pls. I, II
Liber precum (Book of Cerne)
England, Mercia
s. ix ^{1/2}, s. xiii–xv ⁱⁿ



1. Ll.1.10, f. 2v

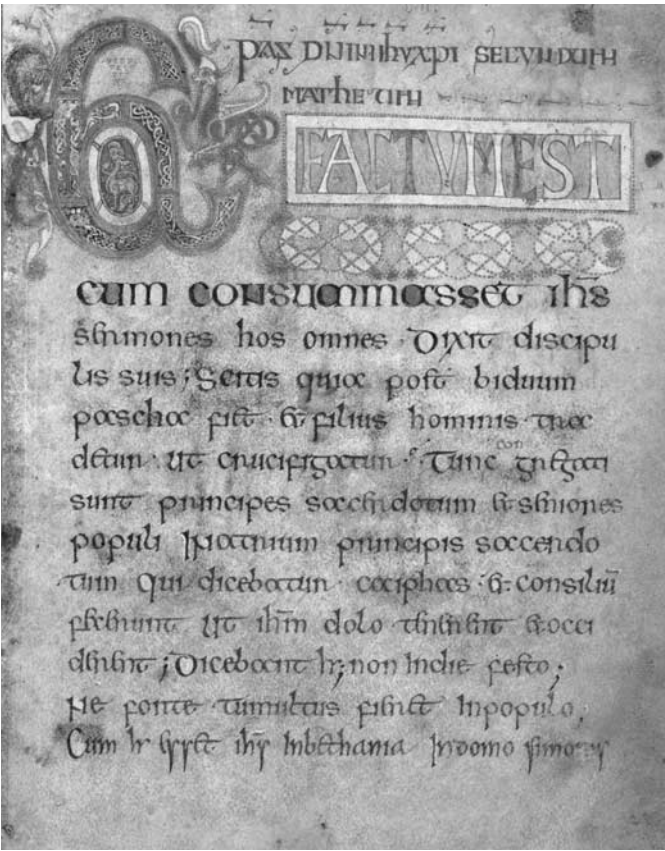
Parchment, xxvi + 98 + xxvii fols. (foliated **2–99**), 231 x 183 mm (181–93 x 133 mm), 18–20 lines, ruled in hard point, rubrics, marginal corrections and notes (s. ix onwards), quire signatures, 2° fol. *Passio domini* (3).

CONTENTS
Part I: *Cartae ad abbatiam Cernelii spectantes*, etc. (s. xiii–xiv, **i–xxvi** °, ends incomplete). Part II: Exhortation to prayer (in

Anglo-Saxon, **2**, begins incomplete); *Evangelia* (extracts) (**2v–40**); *Preces et hymni* (**40v–87v**); *Psalterium abbreviatum* (**87v–98**); *De descensu Christi ad inferos* (**98v–99v**, ends incomplete). Part III: *Sequentiarius* (s. xiv ^{ex}–xv ⁱⁿ, **i–xxviii** °).

SCRIPT
Insular minuscule in Part II; Gothic bookhand (textualis and cur-sive) in Parts I, III.

DECORATION
Full-page miniatures painted in slate blue, red, brown, yellow and white, with frames surrounded by red dots and decorated with floral motifs and head-masks, and inscriptions identifying each of the Evangelists in his human (above) and symbolic (below) form: St Matthew and angel, ‘+HIC MATHEVS IN HVMANITATE’, ‘+HIC MATHEVS IN ANGELICA ASSPECTV VIDETVR’ (**2v**);



1. Ll.1.10, f. 3

St Mark and lion, ‘+HIC MARCVS IN HVMANITATE’, ‘HIC MARCVS IMAGINEM TENET LEONIS’ (12v); St Luke and ox, ‘+HIC LVCAS IN HVMANITATE’, ‘HIC LVCAS FORMAM ACCEPIT VITVLI’ (21v); St John and eagle, ‘+HIC IOHANNIS [sic] IN HVMANITATE’, ‘HIC IOHANNIS VERTIT FRONTEM IN AQVILAM’ (31v).

Ornamental and minor initials

Four powdered gold initials, *Et* ligature, E, A, H (4–8 lines), decorated with interlace infill, zoomorphic and floral motifs, at beginning of Gospel Passion narratives (3, 13, 22, 32); black 4-line initial with interlace and zoomorphic elements to *Lorica of Laidcenn*, first of seventy-one prayers and hymns (43); numerous black initials (2–4 lines) with dotted contours and hybrid forms interlocked with foliage patterns (e.g., 47, 52); *litterae notabiliores* with zoomorphic terminals and infill tinted in yellow, green, light blue and pink.

Text decoration

Headings in capitals within yellow frames (3, 13, 22, 32, 43), two decorated with zoomorphic motifs (32, 43); floral and zoomorphic run-overs tinted in green, light blue, yellow and pink in Breviate Psalter (87v–98).

PROVENANCE

Parts I and III from Cerne Abbey, Dorset, OSB (see below); John Moore (d. 1714); presented to University Library by George I, 1715.



1. Ll.1.10, f. 12v

BINDING

Full goatskin (Douglas Cockerell & Son, Letchworth, 1962), replacing earlier Bowtell-style binding, quarter sheepskin with marbled paper sides (s. xviii^{ex}); for evidence of earlier bindings, see M. P. Brown, *Book of Cerne*, pp. 33–8.

NOTES

Anglo-Saxon portion (Part II) related to manuscripts of the so-called Tiberius group (BL Cotton Tiberius MS C. II, etc.). Acrostic in coloured inks (21) names ‘Aedelvald episcopus’; someone with the same name is also mentioned in the Psalter (87v). This is likely to be the Bishop of Lindisfarne 721–40, or the Bishop of Lichfield 818–30. Dumville argues for former identification, most other scholars for latter. Part II generally considered a Mercian product (for a guide to scholarship on this question, see M. P. Brown, *Book of Cerne*, pp. 20–4). Cerne provenance of Part II questionable: Parts I and III, undoubtedly from Cerne, may only have been combined with Part II after the Dissolution (see M. P. Brown, *Book of Cerne*, esp. p. 29).

CMLUC, IV, pp. 5–6; Kuypers, *Prayer Book of Aedeluald*; G. R. C. Davis, *Cartularies*, no. 218; Ker, *Catalogue*, no. 27; MLGB, p. 49; Lambert, *Bibliotheca*, IIIB, pp. 727, 728; Dumville, ‘Liturgical Drama’; Alexander, *Insular Manuscripts*, no. 66 (with bibliography to 1978); CDDMC, no. 73; Fischer, *Die lateinischen Evangelien*, no. 124; London 1991; M. P. Brown, *Book of Cerne* (with bibliography); Gneuss, *Handlist*, no. 28; Cambridge 2005, no. 4 (by R. McKitterick); Roberts, *Guide to Scripts*, no. 4.

2. li.6.32 see also Pl. III
Evangelia, etc. (Book of Deer)

Scotland(?)
s. ix^{2/2}–x^{1/2}

Parchment, 86 fols., 157 x 108 mm (108 x 71 mm), 22–6 lines, ruled in hard point, above top line, 2° fol. *Omnes* (3).

CONTENTS

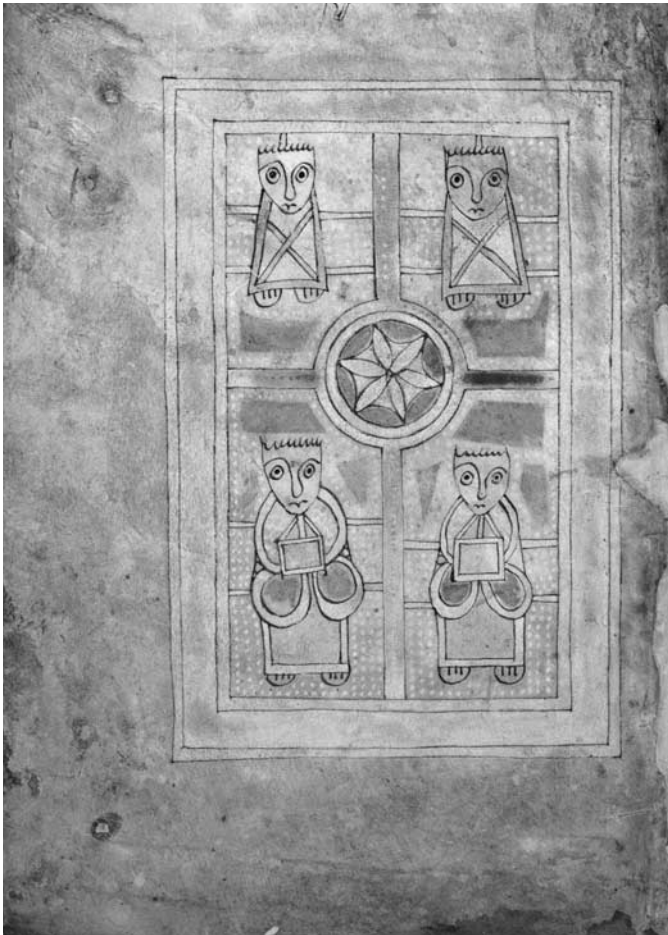
Excerpta ex Evangelio secundum Matthaeum (1–15); *Evangelio secundum Marcum* (16v–27v); *Officia divina pro infirmis* (28v–29); *Excerpta ex Evangelio secundum Lucam* (29v–40); *Evangelium secundum Iohannem* (41v–84v); *Symbolum Apostolorum* (85).

SCRIPT

Insular minuscule.

DECORATION

Full-page miniatures tinted in yellow and orange (now much darkened), and framed by bars, often filled with geometric patterns and interlace: four figures, lower two with satchels, arranged around cross with star/flower in circle at intersection (1v); bearded, seated figure (head partially effaced by staining) holding sword



2. li.6.32, f. 1v

and flanked by two small figures (4v); figure with halo and satchel (16v); figure with halo and satchel, his hands reaching out through frame (29v); figure with satchel, flanked by six small figures (41v); two miniatures of four figures arranged around cross with circle at intersection, first showing three of them with their hands outstretched into frame, second including two figures in lower compartments with satchels (85v, 86).

Half-page miniature

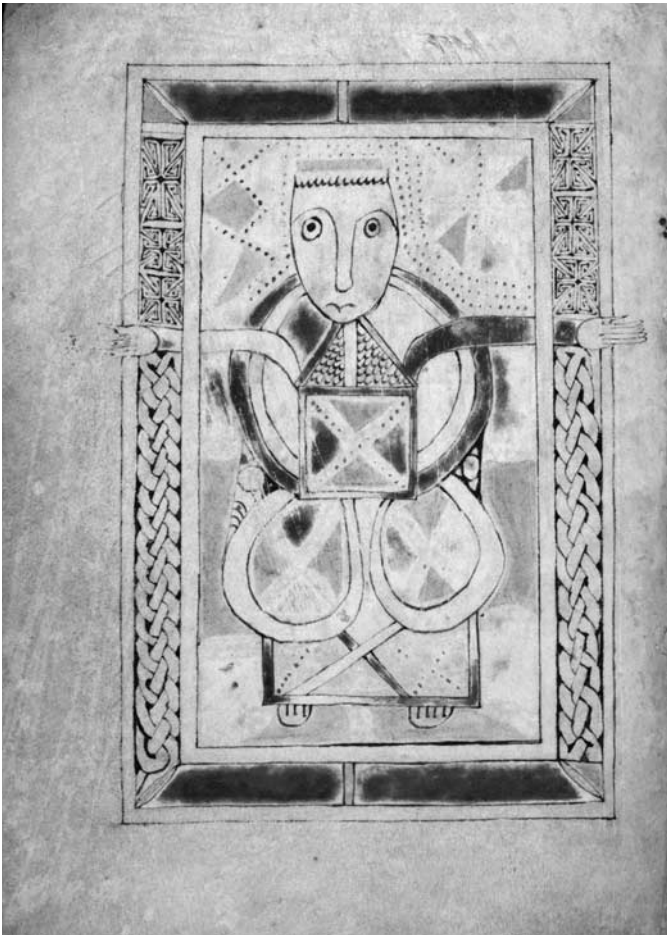
Two figures with satchels at end of St John’s Gospel (84v).

Ornamental and minor initials

Initials (2–5 lines) formed of black interlocking stripes, with geometric infill, tinted in yellow and orange, and human and animal heads projecting from finials, at beginning of Gospels and Creed (2, 5, 17, 30, 42); versals tinted in yellow and orange.

Border decoration

Full borders, tinted and/or decorated with knotwork, geometric designs, etc., to all miniatures and openings of Gospels; numerous drawings of animals, birds, human figures or simple fan-like shapes in black ink, some tinted in yellow and orange (e.g., 41v, 44, 45v, 51v, 54v, 67, 71v).



2. li.6.32, f. 29v

PROVENANCE

The Columban house at Deer, Aberdeenshire; probably at Cistercian monastery of Deer, Aberdeenshire, s. xiii–xvi; Thomas Gale, 1695; acquired in 1697 from Gale by John Moore (d. 1714); presented to University Library by George I, 1715.

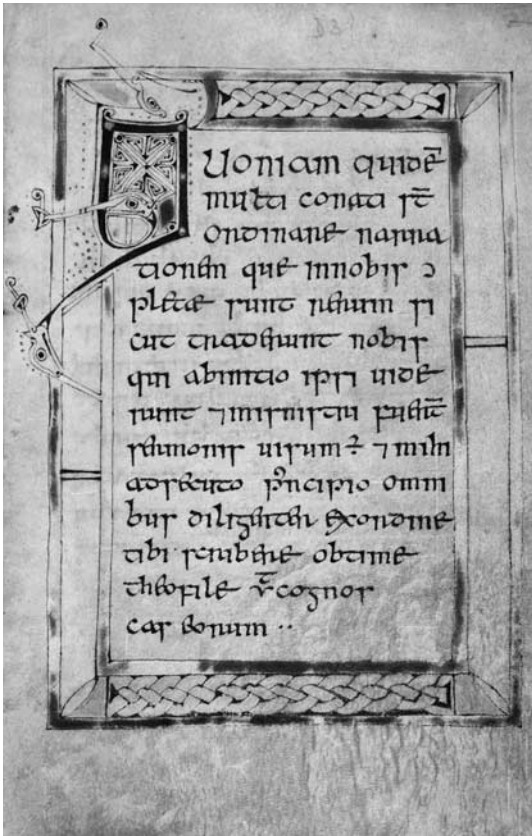
BINDING

Full goatskin (Douglas Cockerell & Son, Letchworth, 1963), replacing sheepskin Bowtell-style binding of s. xviii^{ex}–xixⁱⁿ, which is kept together with the manuscript.

NOTES

Book of Deer is widely regarded as the earliest manuscript produced in Scotland, providing the earliest specimens of vernacular and liturgy in use in Celtic Scotland. It belongs to genre of the Irish pocket Gospel book: see McGurk, ‘Irish Pocket Gospel Book’, for other examples. For iconographic and stylistic similarities see Alexander, *Insular Manuscripts*, nos. 48, 59, 70, 71, 74. Office of Visitation of Sick is a later addition but likely still to be of s. x.

Interpretation of miniatures varies, and view that frontispieces to Gospels depict Evangelists is no longer universally accepted. Henderson’s interpretation in ‘The Book of Deer’, is as follows



2. II.6.32, f. 30

(but for fuller discussion see I. Henderson, 'Figurative Style'): **4v**, Abraham; **29v**, Zacharias; **41v**, Christ; **85v**, Ascension. Geddes's interpretation is: **1v**, two Evangelists and two other figures; **4v**, Matthew; **29v**, Zacharias and Luke 'compressed'; **41v**, Christ; **85v**, empty cross; **86v**, four Evangelists. Marner's interpretation is: **4v**, Christ; **16v**, Crucifixion; **41v**, resurrected Christ surrounded by angels.

Association with Deer deduced from additions in Gaelic or Middle Irish (3–5) and Latin brieve of King David I in favour of *clerici de Der* (40). One entry is dated 8 David I (1131–32). These additions were almost certainly made at Deer. See especially K. Jackson, ed. and trans., *Gaelic Notes*; Broun, 'Charters', Appendix II; Barrow, *Charters*, no. 136. II.6.32 may have belonged to John Aubrey: see Zutshi, 'Book of Deer after c. 1150', pp. 101–2.

CMLUC, III, pp. 530–2 (by Henry Bradshaw); Stuart, *Book of Deer*; Bond and Thompson, *Facsimiles of Manuscripts*, pl. 210 (description by H. Bradshaw); Fraser, 'Gaelic Notitia'; K. Jackson, ed. and trans., *Gaelic Notes*; Alexander, *Insular Manuscripts*, no. 72 (with further bibliography); K. Hughes, 'Book of Deer'; Davies, 'Latin Charter-Tradition', pp. 261 n. 17, 264–5; I. Henderson, 'Book of Deer', p. 278; Glasgow 1990, no. 30; J. Brown, 'Northumbria', p. 275 nn. 135, 146; M. P. Brown, *Book of Cerne*, p. 99; Geddes, 'Book of Deer'; Barrow, *Charters*, no. 136; Broun, 'Charters'; Gneuss, *Handlist*, no. 19; Marner, 'Sword of the Spirit'; Zutshi, 'Henry Bradshaw'; Dumville, 'The Book of Deer'; Forsyth, *Studies* (with bibliographies).

3. Kk.3.21
Boethius, *De consolazione philosophiae cum glossa*
England
c. 1000



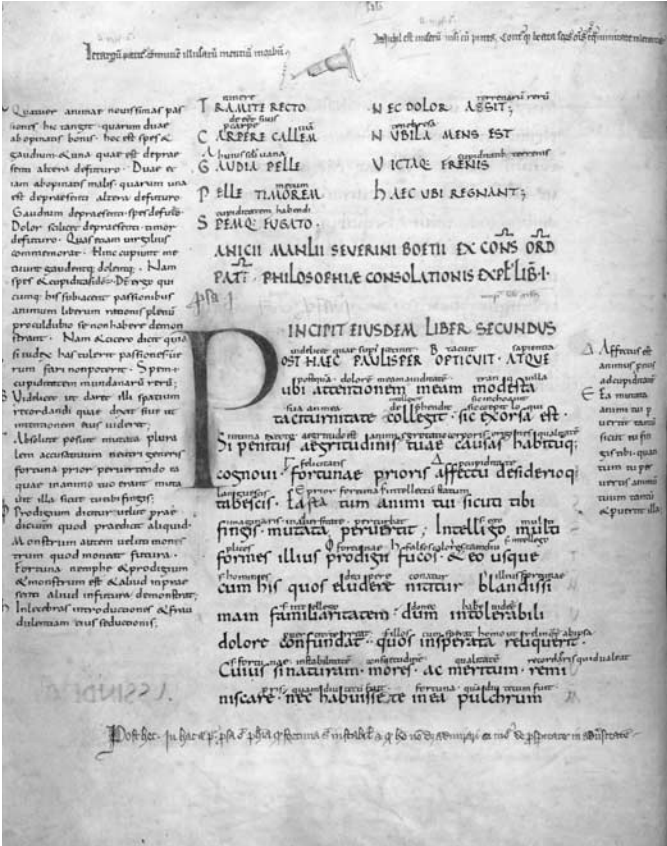
3. Kk.3.21, f. 1

Parchment, 104 fols., 300 x 235 mm (178–98 x 114 mm), 20–2 lines, ruled in hard point, above top line, contemporary marginal and interlinear gloss with later marginal notes, rubrics in rustic capitals, 2° fol. *materia perfecte*.

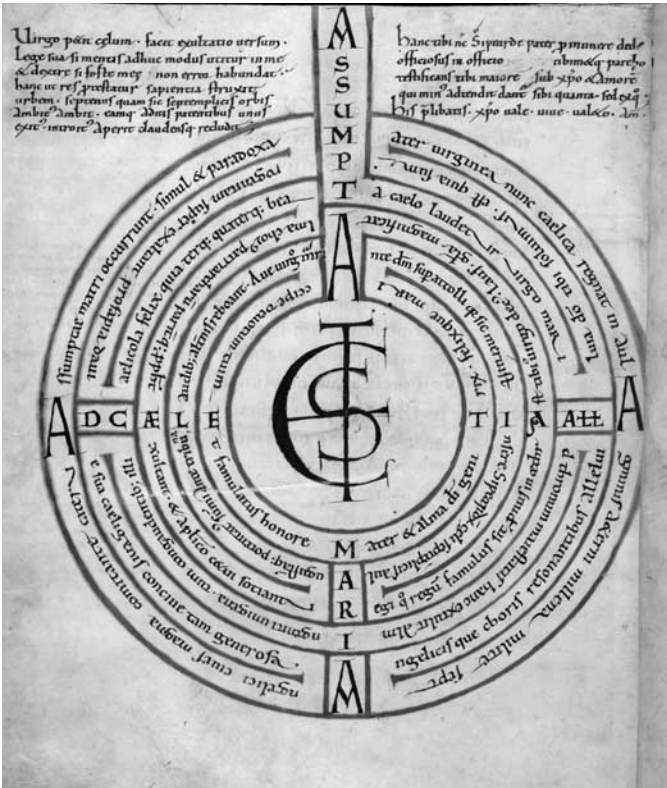
SCRIPT
Caroline minuscule (prose), rustic capitals (verse).

DECORATION
Ornamental and minor initials
Gold initial (6–12 lines) to each book, first one enclosing circular knotwork design (**1**, **15v**, **34v**, **61v**, **85**); chapter initials in black or red ink (3–4 lines); red initials at beginning of all meters.

Diagram
Acrostic labyrinth-like schema depicting 'sevenfold heaven', with central circle and six concentric rings enclosing verses in praise of Virgin, three running clockwise and three anticlockwise, and divided in four by cross-shaped inscription 'Assumpta est Maria



3. Kk.3.21, f. 15v



3. Kk.3.21, f. 103v

ad caelestia alleluia'; above, brief text addressed 'tibi Siward pater' (103v, see Provenance).

PROVENANCE
Abingdon Abbey, Berks., OSB (Siward, referred to at 103v, is likely to be Siward, abbot of Abingdon 1030–44, see Ker, *Catalogue*, p. 38; 'hrocanlea' at 104v is probably Rockley, a property of the abbey); first appears in University Library in 1557 catalogue (P. D. Clarke, *Cambridge*, p. 81 no. 38).

BINDING
Full speckled calf with two blind-tooled frames (s. xvii in; rebounded, W. H. Smith & Son Ltd, London, 1959).

NOTES
Closely related to copy of same text in Trinity College, Cambridge MS O.3.7. Commentary by Remigius (K redaction). Greek letters often used as *signes de renvoi*. Notes at 104v include row of neumes, names of winds in Latin and Old English (s. xi med). Welsh notes inside front cover (s. xvii(?)).

CMLUC, III, p. 630; Ker, *Catalogue*, p. 38; MLGB, p. 2; Clayton, 'Assumptio Mariae'; Gibson and Smith, *Codices Boethiani*, I, no. 9 (with further bibliography); Leedham-Green and McKitterick, 'A Catalogue of Cambridge University Library', p. 216; Szarmach, 'Alfred', pp. 136–40 and fig. 1; P. D. Clarke, *Cambridge*, p. 81 no. 38; Gneuss, *Handlist*, no. 23.

4. Kk.5.32 see also Pl. IV
Boethius, *De arithmetica*, etc.

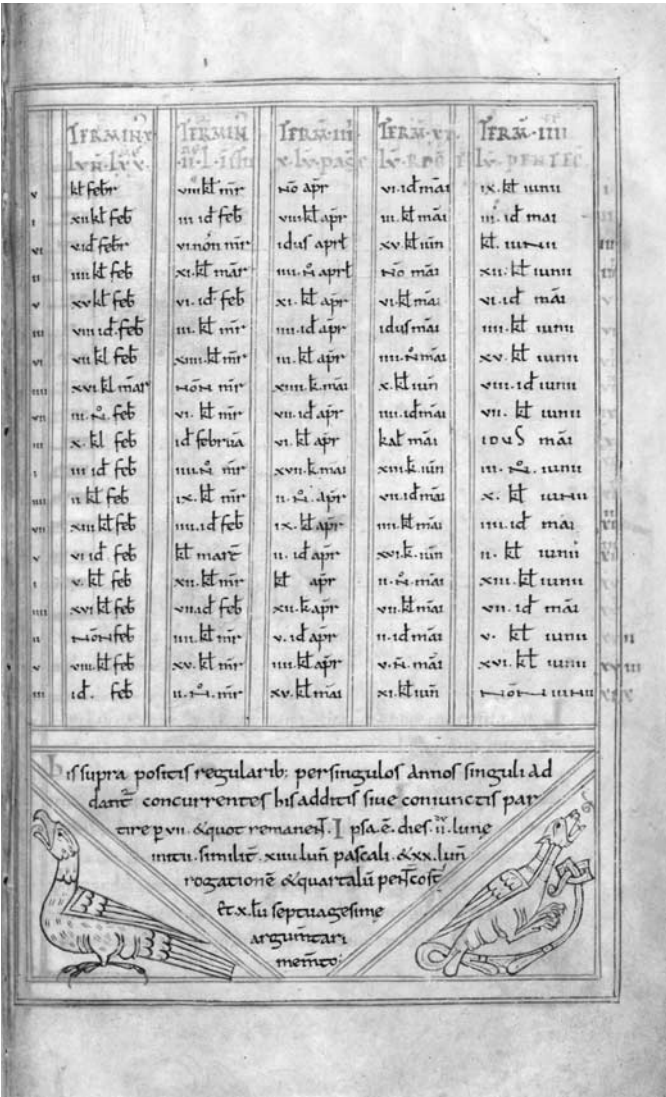
England, Canterbury or West Country
1021–22(?) (Part II), s. xi ex-xii in (60v and Part III), s. xii in (1–44), s. xiii (44v–48)

Parchment, 73 fols. (foliated 1–72, 76), 250–5 x 167–80 mm (187–207 x 110–18 mm), 32–6 lines, ruled in plummet and hard point, above top line, rubrics, 2° fol. *primi et*.

CONTENTS
Part I: Boethius, *De arithmetica*, etc. (1–44); *Computus* (extracts), etc. (44v–48). Part II: *Kalendarium*, *De computo ecclesiastico*, etc. (49v–60). Part III: *Tabulae paschales* (61–72v); *Computistica* (76–76v).

SCRIPT
Caroline minuscule.

DECORATION
Ornamental and minor initials
Red, green, blue and occasional beige penwork initials (2–12 lines) at beginning of books and chapters, and in Calendar, some with arabesque finials (e.g., 1, 2, 13v).



4. Kk.5.32, f. 58

Diagrams

Numerous diagrams and tables in brown, red and green, that on 58 containing drawings of bird and dragon.

Border decoration

Red and green foliage scrolls (8, 13v).

PROVENANCE

Robert Heges, s. xvi (76v); John Moore (d. 1714); presented to University Library by George I, 1715.

BINDING

Quarter goatskin with marbled paper sides and vellum tips (Douglas Cockerell & Son, Letchworth, 1962).

NOTES

Calendar on 50–55v connected to Glastonbury by J. A. Robinson, ‘Mediaeval Calendars of Somerset’, p. 144, Somerset being favoured

because of addition of St Congar (27 Nov.) (55); see also Wormald, ed., *English Kalendars before A.D. 1100*, no. 6 (‘West Country’). However, P. S. Baker and Lapidge, eds., *Byrhtferth’s Enchiridion*, pp. cxxi–cxxii, favour initially Canterbury (St Augustine’s) and later Wilts./Dorset. Paschal tables (61–75v) have names of popes, rulers, etc. and occasionally historical events in margins, either in original hand or as additions. St Augustine’s rejected by Barker-Benfield, *St Augustine’s*, III, 1825–6. Dedictory poem from Edric (perhaps name of scribe of this addition) to a church dedicated to St Peter in margin of 43v. Excerpts in Anglo-Saxon from Byrhtferth probably copied from MS A in classification of Baker and Lapidge.

CMLUC, III, pp. 701–2; BML, no. 802; J. A. Robinson, ‘Mediaeval Calendars of Somerset’, p. 144; Wormald, *English Kalendars before A.D. 1100*, no. 6; Ker, *Catalogue*, no. 26; Thorndike and Kibre, *Incipits*, col. 245, 1382; MLGB, p. 90; Cambridge 1985, no. 25; CDDMC, no. 69; Dumville, *Liturgy*, pp. 21, 25, 27, 51–65; Gibson, Heslop and Pfaff, *Eadwine Psalter*, p. 74 n. 45; Dumville, *English Caroline Script*, pp. 79–80, 83–84, 85, 90, 108, 147, 155; P. S. Baker and Lapidge, eds., *Byrhtferth’s Enchiridion*, pp. cxxi–cxxii; Gibson and Smith, *Codices Boethiani*, I, no. 11; Gameson, *Early Norman England*, no. 44; Gneuss, *Handlist*, no. 26.

5. Ff.1.23 see also Pls. V–VII

Psalterium Romanum, etc. (in Latin and Old English)

England, Ramsey or Canterbury(?)

s. xi ^{1/2}

Parchment, iii + 278 + iii fols., paginated (333–551) in red crayon (Parkerian), 271 x 158 mm (253 x 115 mm), 32 lines, ruled in hard point, above top line, Roman and Old English Psalter texts written in same size in alternate black and red lines, *tituli* in green, 2° fol. *Beatus vir*.

CONTENTS

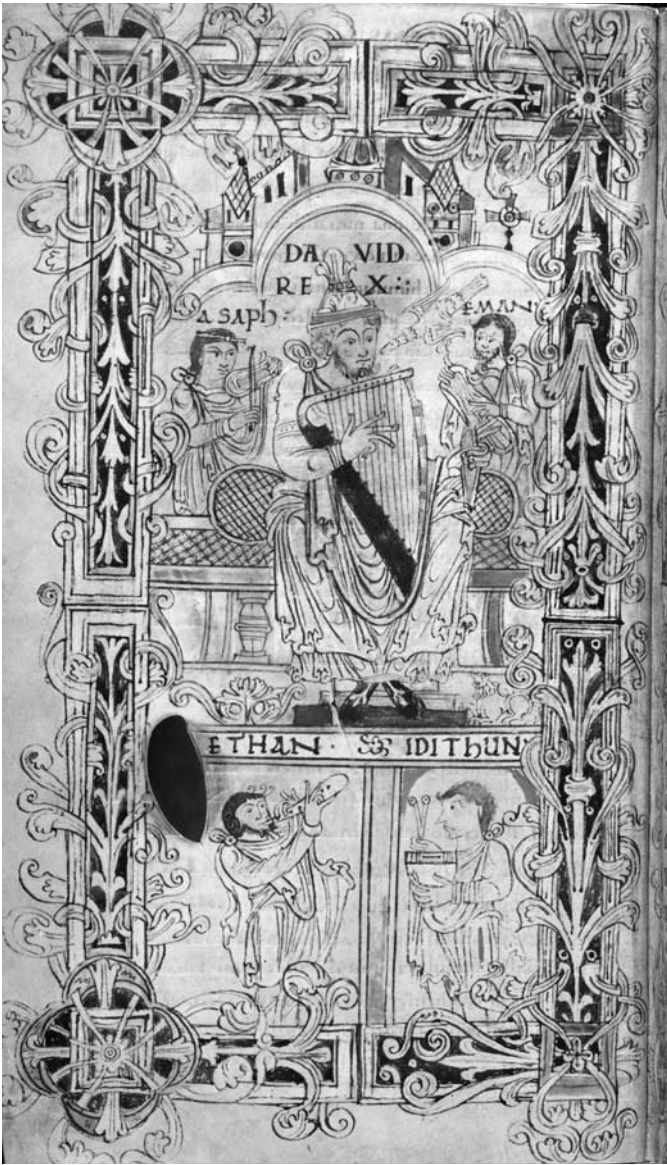
Table of incipits, s. xvi (2v–3); *Orationes et preces* (4); *Psalterium Romanum* (4v–250v); *Cantica* (251–274); *Litania* (274–276); *Orationes* (276–281v).

SCRIPT

Insular and Caroline minuscule.

DECORATION

Full-page miniatures preceding Pss. 1, 51, 101 and 109, in ink, tinted in brown, orange, green and yellow, and framed by acanthus foliage bars: David playing harp, inspired by Holy Spirit, surrounded by Asaph, Eman, Ethan and Idithun holding musical instruments under arch, frame with square corner bosses (4v); Crucifixion with weeping personifications of *Sol* and *Luna*, Virgin, St John writing on tablet: ‘Et ego vidi et testimonium’, hand of



5. Ff.1.23, f. 4v

God above Christ on Cross inscribed ‘Lignum vite’, (88); Christ in mandorla carried by four angels, blessing, holding book and supporting scroll inscribed: ‘Ego sum deus qui reddo unicumque iuxta sua opera’ (171); Christ trampling on lion and basilisk, whose tongue he pierces with cross shaft, carrying tablet inscribed: ‘Super aspidem et basiliscum ambulabis’ (195v).

Figural and ornamental initials

B(eatus)-initial (19 lines) outlined in sepia, tinted in brown and tan, with shafts ending with interlaces, and bows filled with acanthus and linked by mask head, fully framed by acanthus foliage bars with round corner bosses (Ps. 1, 5); sepia, green and orange initials (5–7 lines) with interlace knotwork and foliage/knotwork bars fully framing page (Ps. 51, 88v; Ps. 101, 171v); 5-line orange initial with foliage infill on green ground (Ps. 109, 196); red, green and black initials (2–12 lines) formed of, or filled with, foliage

scrolls, humans, animals, dragons and grotesques to each Psalm and Canticle, including *Agnus Dei* (10), man with axe (169).

PROVENANCE

Perhaps Ramsey Abbey, Hunts., or Christ Church, Canterbury (see Notes); bequeathed by Matthew Parker to Nicholas Bacon, Lord Keeper of the Great Seal, 1575 (‘To the Lord Keper’ written in red crayon, inside cover); already in Bacon’s possession before this, as he donated the manuscript to Cambridge University in 1574 (woodcut bookplate recording Bacon’s gift, earliest English example of its kind, inscription at 1).

BINDING

From ‘Morocco Binder Group’, s. xvi: fine brown leather over boards, gold-tooled frames and floral panels, with raised split cords and endbands, oval medallions above and below painted arms: *sable a fess argent*, clasps gone, patterned fore-edges (s. xvi; repaired, Douglas Cockerell & Son, Letchworth, 1959).

NOTES

St Kenelm distinguished in Litany (274v), which led to assigning Ff.1.23 to Winchcombe Abbey, Glos. This is rejected by more recent scholarship, e.g., Lapidge, who suggests Ramsey; Ker rejected both Canterbury and Winchcombe. Other writers (e.g., Dumville) suggest a Canterbury origin on palaeographical or artistic grounds.

CMLUC, II, pp. 312–13; Wildhagen, *Der Cambriger Psalter*; Weber, *Le psautier romain*; Ker, *Catalogue*, no. 13; *MLGB*, p. 335; Temple, *Anglo-Saxon Manuscripts*, no. 80 (with further bibliography); London 1984a, no. 64; Oates, *History*, pp. 96, 100, 111–13; *CDDMC*, no. 29; Dumville, ‘On the Dating’, pp. 40–1; Lapidge, ‘Abbot Germanus’, pp. 100–2, 115–17, 126–9, with further bibliography; Dumville, *English Caroline Script*, pp. 59–63, 79–80, 83–4, 140, 155; Toswell, ‘St Martial’; Gneuss, *Handlist*, no. 123; Büttner, ‘Der illuminierte Psalter’, pp. 7 n. 20, 57, 65–6, 73; Cambridge 2005, no. 17; P. J. Lucas, ‘Abraham Whelock’, pp. 403, 404, 406, 408.

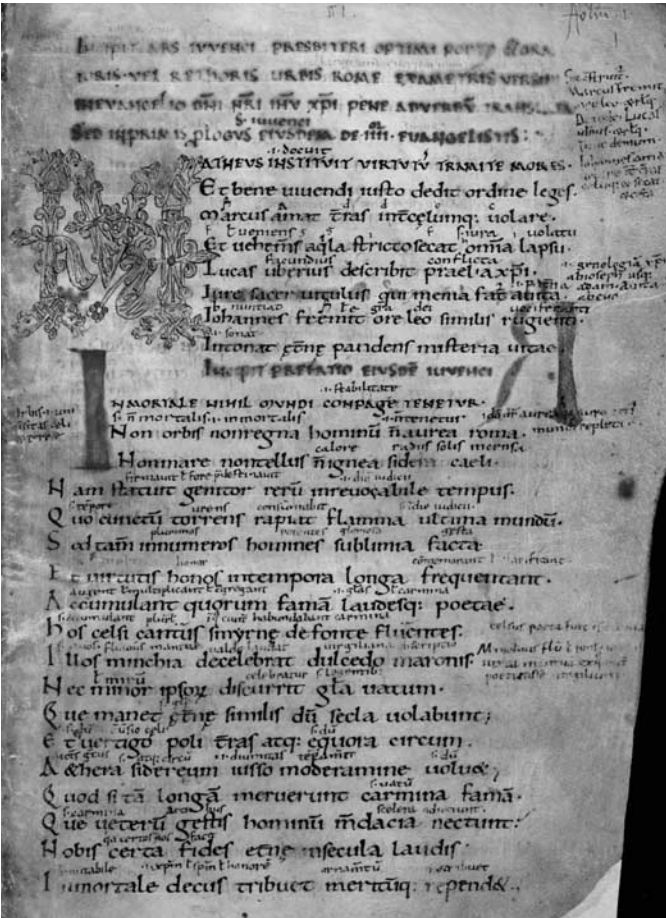
6. Gg.5.35
Iuvenius, *Ars Iuvenii*, etc.

England, Canterbury, St Augustine’s Abbey
s. xi^{med} (after 1039)

Parchment, ii + 446 fols. (leaves missing between 179–180, 440–441, 441–442, 445–446, also 235 and 277–279 missing), 213 x 145 mm (184 x 110 mm), 31–40 lines, ruled in hardpoint, above top line, frequent glosses, quire signatures, 2^o fol. *visceribus*.

CONTENTS

Part I: Iuvenius, *Ars Iuvenii*, etc. (1–52v); Sedulius, *Paschale carmen*, etc. (53–84v); Arator, *Historiae apostolicae*, etc. (84v–126); Tiro Prosper, *Praefatio in Epigrammata super Dicta S. Augustini*, etc. (126v–147v); Prudentius, *Psychomachia*, etc. (148–164);



6. Gg.5.35, f. 1

Boethius, *De consolazione philosophiae* (170–209v); Rabanus Maurus, *De laudibus sanctae crucis* (209v–263); *Tractatus de musica* (263v–276v). Part II: Aldhelmus, *De virginitate*, etc. (280–326v); Milo, *De laude pudicitiae vel sobrietatis* (327–361v), etc. Part III: *Aenigmata*, etc. (370–425v). Part IV: *Carmina Cantabrigiensia*, etc. (432–446v).

SCRIPT
Caroline minuscule.

DECORATION
Diagrams in acrostic form executed in red, yellow and brown ink to *Carmina* 1–28 (211–225), including Crucifixion (211v), four angels (213), *Agnus Dei* and symbols of Evangelists (218v), Rabanus Maurus kneeling (225).

Ornamental and minor initials
Zoomorphic interlace M with dragon terminals in red and brown ink (8 lines) (1); red and dark brown-red initials (2–6 lines) throughout remainder.

PROVENANCE
Canterbury, St Augustine’s Abbey (‘Liber Sancti Augustini Cant.’ and pressmark ‘D.ix Gra ii’, iii v); bought by University Library in



6. Gg.5.35, f. 211v

1672, perhaps from the library of Meric Casaubon of Canterbury, d. 1671 (see Oates, *History*, pp. 400–15).

BINDING
Full goatskin (Douglas Cockerell & Son, Grantchester, 1974).

NOTES
Leaf (442) removed in 1840 restored in 1983. Contents list, s. xii and xiv (iii v). Schipper (‘Origin’, p. 46) notes peculiar rearrangement of the texts and images of *De laudibus*.

CMLUC, III, pp. 201–5; Priebisch, *Deutsche Handschriften*, I, pp. 20–7; M.R. James, *Canterbury and Dover*, pp. lxx, lxxxv, 521 no. 1437 (2° fol. does not correspond however); MLGB, p. 40; Strecker, ed., *Carmina Cantabrigiensia*; Ker, *Catalogue*, no. 14; Rigg and Wieland, ‘Canterbury Classbook’; Cambridge 1982, no. 6; Dronke, Lapidge and Stotz, ‘Die unveröffentlichten Gedichte’; Lapidge, ‘Study of Latin’; Gibson, Lapidge and Page, ‘Neumed Boethian Metra’; Wieland, *Latin Glosses*; Cambridge 1985, no. 40; Wieland, ‘The Glossed Manuscript’; Ohlgren, *Insular and Anglo-Saxon*, no. 224; CDDMC, no. 44; Dumville, *English Caroline Script*, pp. 108, 147; Ziolkowski, *Cambridge Songs* (with further bibliography); Gibson and Smith, *Codices Boethiani*, I, pp. 40–1; Lendinara,

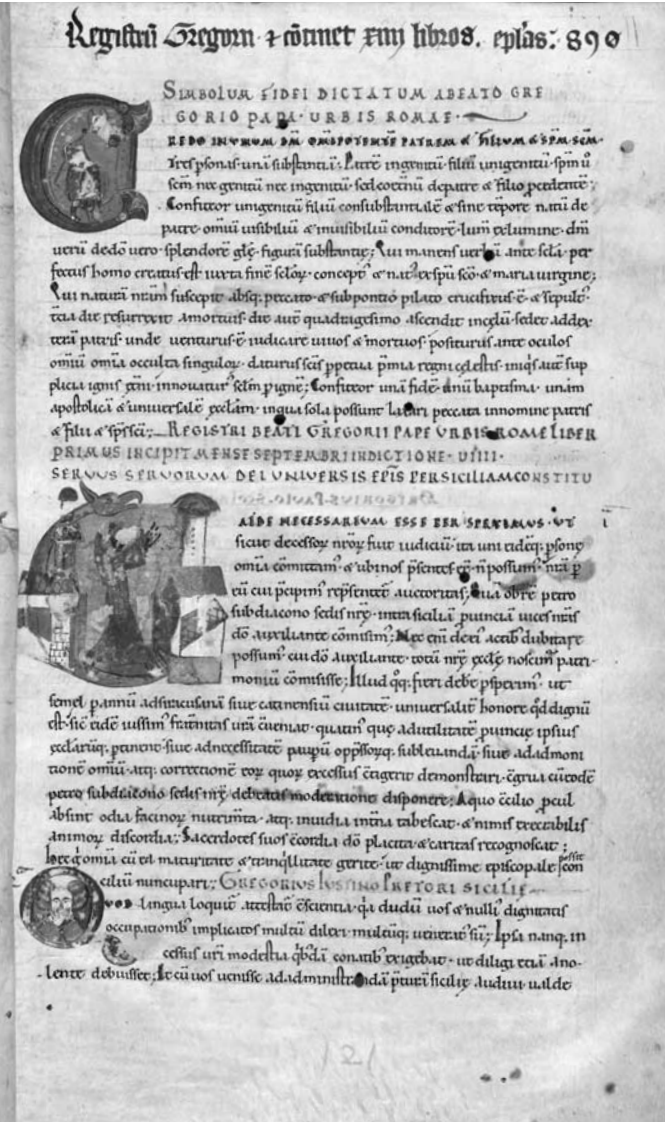
Anglo-Saxon Glosses, pp. 58, 73 n. 6, 82, 100, 105, 169 n. 57, 173, 185–6, 188, 190, 214, 291–2 n. 7, 297–9, 311–12; Gneuss, *Handlist*, no. 12; R.M. Thomson and Gullick, *Worcester Cathedral Library*, p. 120; Schipper, ‘Trinity College Hrabanus’, p. 46; Barker-Benfield, *St Augustine’s*, III, pp. 1709–14, 2031 (index).

7. Ii.3.33

Gregorius Magnus, *Registrum epistolarum*, etc.

England, Canterbury(?)
1079–1101

Parchment, 195 fols. (all after 195 missing), 310 x 205 mm (243 x 145 mm), 39–41 lines, ruled in plummet, above top line, rubrics, quire signatures, 2° fol. *potestis exorare* (6).



7. Ii.3.33, f. 5

CONTENTS
Gregorius Magnus, *Registrum epistolarum* (5–194); *Conversio Berengarii ab haeresi sua* (194–194v).

SCRIPT
Caroline minuscule.

DECORATION
Inhabited initials

Two large (6–8 line) and two small (3–line) painted initials in bright blue, red and green, enclosing human figures or a bust, to *Symbolum fidei* and first three letters (5, 5v, rubbed); 3-line red penwork initial framing human face (8v).

Ornamental and minor initials
Red or green penwork initials (3–15 lines), filled with delicate arabesque ornamentation in same colour as main body of letter, except most elaborate initial S to bk VI (13 lines, 75v) whose green foliage is decorated with blue and red flowers and berries. The larger initials introduce some books (e.g., 23v, 57, 114, 140), small ones numerous letters (e.g., 38, 98); remaining letters receive 3-line green or red initials with occasional arabesque finials; blue and red initials (2–4 lines) on red/blue/green/yellow ground at 5v–6v only.

PROVENANCE
St Augustine’s, Canterbury(?) (see Notes); Christ Church, Canterbury (no. 152 in Eastry’s catalogue of s. xivⁱⁿ; no. 128 in Ingram’s list of 1508; see M.R. James, *Canterbury and Dover*, pp. 33, 157, 507, 514); apparently entered University Library between 1583 and 1600 (see Ker, ‘Norwich Cathedral Priory’, p. 3; T. James, *Ecloga*, no. 121 (number appears inside front cover and on 1)).

BINDING
Full blind-tooled calf with two rectangular frames and six fleurons (s. xvi^{ex}–xviiⁱⁿ; rebaked, University Library, 1950).

NOTES
M. Gullick (personal communication) suggests that the scribe was continental and that the manuscript derives not from Christ Church, but from St Augustine’s, Canterbury, the style of the initials on the opening leaves being closest to those of Durham Cathedral Library MS B.II.16. At end of quire 12 is the contemporary note ‘medietas libri’. The manuscript has the following additions (s. xiiⁱⁿ): Ps.-Jerome, *De nativitate Mariae* (1–3); letters of Pope Paschal II and Anselm of Canterbury (194v–196).

CMLUC, III, pp. 435–6; Ewald and Hartmann, eds., *Gregorii I Papae*, p. xxiii; Ker, *Norman Conquest*, p. 15; C.R. Dodwell, *Canterbury School*, p. 120; MLGB, p. 30; Cambridge 1985, no. 31; CDDMC, no. 58; R.H. and M.A. Rouse, eds., *Registrum Anglie*, pp. 59–61; Gameson, *Early Norman England*, no. 34; Gneuss, *Handlist*, no. 17; Morgan and Thomson, *History of the Book in Britain*, fig. 4.9.