

Cambridge University Press

978-0-521-10386-2 - Cambridge and the Torres Strait: Centenary Essays on the 1898 Anthropological Expedition

Edited by Anita Herla and Sandra Rouse

Frontmatter

[More information](#)

---

## Cambridge and the Torres Strait

*Centenary Essays on the 1898 Anthropological Expedition*

Torres Strait has an established place in the history of anthropology because of its association with the Cambridge University Expedition of 1898 organised by A. C. Haddon. This early British anthropological expedition is regarded as a seminal event in the formation of academic anthropology in Britain. Its goal was to make an unprecedentedly comprehensive anthropological study embracing ethnology, physical anthropology, psychology, linguistics, sociology and ethnomusicology. The nine interdisciplinary essays in this centenary volume offer new ways of looking at and situating the Expedition's work in historical and intellectual debates. Central themes covered are the relationship between the Expedition members and the Torres Strait Islanders; the innovations associated with the Expedition; and the Expedition's influence on the development of anthropology and psychology. One hundred years on, the results of the Expedition have a contemporary relevance for anthropology and for the Torres Strait Islanders.

*Anita Herle* is Senior Assistant Curator at the Cambridge University Museum of Archaeology and Anthropology.

*Sandra Rouse* is Research Associate in the Department of Social Anthropology, University of Cambridge.

Cambridge University Press

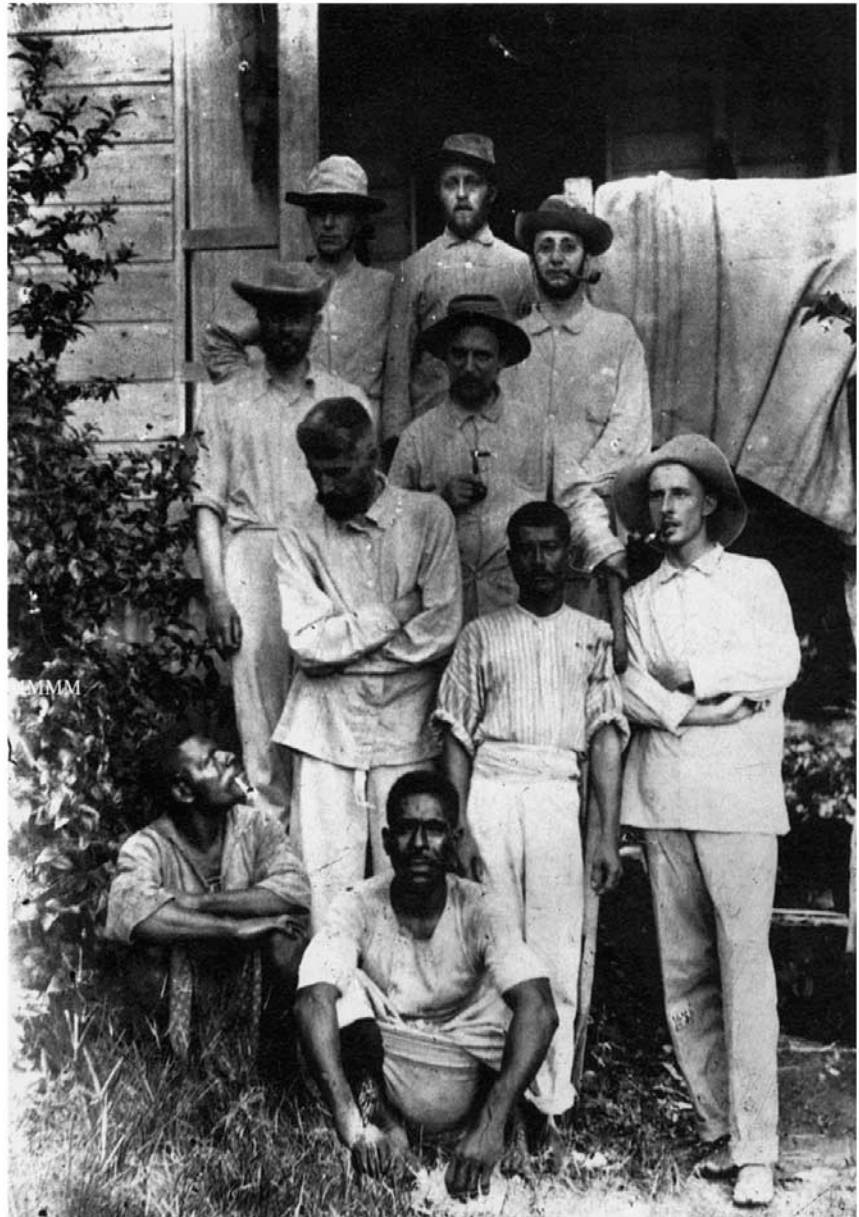
978-0-521-10386-2 - Cambridge and the Torres Strait: Centenary Essays on the 1898 Anthropological Expedition

Edited by Anita Herla and Sandra Rouse

Frontmatter

[More information](#)

Frontispiece *Expedition members with assistants (l-r). Seated: Jimmy Rice, Debe Wali; First row: Alfred Haddon, Charlie Ontong, Anthony Wilkin; Second row: William Rivers, Sidney Ray; Third row: William McDougall, Charles Myers, Charles Seligman. Mer, 1898.*



Cambridge University Press

978-0-521-10386-2 - Cambridge and the Torres Strait: Centenary Essays on the 1898 Anthropological Expedition

Edited by Anita Herle and Sandra Rouse

Frontmatter

[More information](#)

# Cambridge and the Torres Strait

*Centenary essays on the 1898  
anthropological expedition*

*edited by*

Anita Herle and Sandra Rouse



Cambridge University Press

978-0-521-10386-2 - Cambridge and the Torres Strait: Centenary Essays on the 1898 Anthropological Expedition

Edited by Anita Herle and Sandra Rouse

Frontmatter

[More information](#)

CAMBRIDGE UNIVERSITY PRESS

Cambridge, New York, Melbourne, Madrid, Cape Town, Singapore, São Paulo, Delhi

Cambridge University Press

The Edinburgh Building, Cambridge CB2 8RU, UK

Published in the United States of America by Cambridge University Press, New York

[www.cambridge.org](http://www.cambridge.org)

Information on this title: [www.cambridge.org/9780521103862](http://www.cambridge.org/9780521103862)

© Anita Herle and Sandra Rouse 1998

This publication is in copyright. Subject to statutory exception and to the provisions of relevant collective licensing agreements, no reproduction of any part may take place without the written permission of Cambridge University Press.

First published 1998

This digitally printed version 2009

*A catalogue record for this publication is available from the British Library*

*Library of Congress Cataloguing in Publication data*

Cambridge and the Torres Strait: centenary essays on the 1898

Anthropological Expedition/edited by Anita Herle and Sandra Rouse

p. cm.

Includes bibliographical references and index.

ISBN 0 521 58461 2 (hc)

1. Anthropology – Great Britain – History – 19th century.  
2. Anthropology – Australia – Torres Strait Islands (Qld.) – Field work. 3. University of Cambridge. Faculty of Archaeology and Anthropology – History. 4. Haddon, Alfred C. (Alfred Cort), 1855–1940 – Journeys – Australia – Torres Strait Islands (Qld.)  
5. Torres Strait Islanders – Material culture. 6. Torres Strait Islanders – Social life and customs. 7. Torres Strait Islands (Qld.) – Description and travel. I. Herle, Anita, 1956–  
II. Rouse, Sandra, 1950–  
GN17.3.G7C35 1998

306'.09943'8–dc21 97–42217 CIP

ISBN 978-0-521-58461-6 hardback

ISBN 978-0-521-10386-2 paperback

Cambridge University Press

978-0-521-10386-2 - Cambridge and the Torres Strait: Centenary Essays on the 1898 Anthropological Expedition

Edited by Anita Herla and Sandra Rouse

Frontmatter

[More information](#)

---

For Eva, Simon and Michael

Cambridge University Press

978-0-521-10386-2 - Cambridge and the Torres Strait: Centenary Essays on the 1898 Anthropological Expedition

Edited by Anita Herle and Sandra Rouse

Frontmatter

[More information](#)

## Contents

<i>List of illustrations</i>	page viii
<i>List of maps</i>	xi
<i>Notes on contributors</i>	xii
<i>Acknowledgements</i>	xiv
<i>List of abbreviations</i>	xv
1 Introduction: Cambridge and the Torres Strait <i>Anita Herle and Sandra Rouse</i>	1
2 Haddon attends a funeral: fieldwork in Torres Strait, 1888, 1898 <i>Jeremy Beckett</i>	23
3 Expedition and institution: A. C. Haddon and anthropology at Cambridge <i>Sandra Rouse</i>	50
4 The life-histories of objects: collections of the Cambridge Anthropological Expedition to the Torres Strait <i>Anita Herle</i>	77
5 Performing science: still photography and the Torres Strait Expedition <i>Elizabeth Edwards</i>	106
6 Getting a result: the Expedition's psychological research 1898–1913 <i>Graham Richards</i>	136
7 Fieldworkers and physiologists <i>Henrika Kuklick</i>	158
8 At the Australian–Papuan linguistic boundary: Sidney Ray's classification of Torres Strait languages <i>Anna Shnukal</i>	181
9 Making sense of diversity and complexity: the ethnological context and consequences of the Torres Strait Expedition and the Oceanic phase in British anthropology, 1890–1935 <i>James Urry</i>	201
<i>Bibliography</i>	234
<i>Index</i>	250

## Illustrations

Expedition members with assistants. Mer, 1898. © CUMAA T.Str. 68a.	<i>frontispiece</i>
1.1 Itinerary of the Expedition members April–November 1898.	<i>page 2</i>
1.2 Subject outline of the <i>Reports of the Cambridge Anthropological Expedition to the Torres Strait</i> .	4
1.3 Coloured drawings by Haddon of the saw-fish dance and masks. © CUMAA.	6
1.4 The congregation after church service at Darnley Island. © CUMAA T.Str. 348.	9
1.5 Contract signed by the Expedition members. © CUMAA.	10
1.6 Acting Government Resident Hugh Milman. Thursday Island, 1888. © CUMAA T.Str. 61a.	13
1.7 Robert Bruce with his sons. Mer, 1888. © CUMAA T.Str. 89.	14
1.8 Ulai, a Meriam friend and interpreter to the Expedition members. Mer, 1898. © CUMAA T.Str. 135.	16
1.9 Men dancing. Mer, 1888. © CUMAA T.Str. 29.2.	20
2.1 Photograph of Expedition members counterposed with friends and interpreters on Mabuiag, 1898. © CUMAA T.Str. 68 and 21.	31
2.2 Nomoa, chief of Mabuiag, with dugongs. Mabuiag, 1888. © CUMAA T.Str. 435.	32
2.3 Men on the lookout for dugong. Mabuiag, 1888. © CUMAA T.Str. 66.	33
2.4 Government Court House with the local chief or <i>mamoose</i> , Arei (Harry) seated. Mer, 1888. © CUMAA T.Str. 3a.	37
2.5 Women attending a meeting at the London Missionary Society Institute on Mer, 1888. © CUMAA T.Str. 10.	39
2.6 Finau, London Missionary Society teacher from Samoa, and his family. Mer, 1898. © CUMAA T.Str. 197.	43
2.7 Rehearsal of Malu songs at Las, Mer, 1898. © CUMAA T.Str. 260.	44
2.8 Re-enactment of Malu-Bomai ceremonies. Mer, 1961. © J. Beckett.	45
2.9 Drawing by Pasi of the Malu <i>le</i> (followers of Malu). Mer, 1898. © CUMAA.	47
3.1 Haddon during the first expedition to the Torres Strait. Mabuiag, 1888. © CUMAA T.Str. 88.	52

3.2	Letter from Haddon to his son Ernest. Thursday Island, 1888. © CUMAA.	53
3.3	The Revd James Chalmers with the chief of Saibai, probably 1888. © CUMAA T.Str. 349.	59
3.4	Painted Torres Strait wooden mask. © CUMAA Z9398.	68
3.5	Lectures proposed by the Board for Anthropology, University of Cambridge, 1904–5.	70
3.6	Caricature of Haddon entitled 'All sorts and conditions of men' by W. H. Counsell, 1919. © CUMAA.	72
3.7	Haddon, Reader in Ethnology, in his office in Cambridge. © CUMAA.	75
4.1	Elaborate turtle-shell mask with a crocodile head. © CUMAA 1890.182.	80
4.2	Letter from Haddon to his son Ernest with a detailed sketch of his laboratory. Mer, February 1889. © CUMAA.	83
4.3	Detailed drawings by Haddon showing variations in the design of crocodile arrows. © CUMAA.	84
4.4	Drawing by Haddon of various shell ornaments from Mer. © CUMAA.	85
4.5	Drawing by Joani of Mabuiag showing a man wearing the labar mask. © CUMAA.	86
4.6	Wooden model of a cult figure representing Waier. © CUMAA Z9453.	88
4.7	Models of harvest ceremony dancers. © CUMAA. Z8134b, Z9458, Z9459.	89
4.8	Front and reverse of a cardboard model of the Bomai mask. © CUMAA Z9440.	91
4.9	Cardboard model of the Malu mask. © CUMAA Z9441.	92
4.10	Watercolour by Haddon of his impression of the climax of the Malu ceremony. © CUMAA.	93
4.11	Feather head-dress, <i>dhari</i> . © CUMAA Z7531.	104
4.12	Wooden drum, <i>warup</i> , decorated with cassowary feathers. © CUMAA Z8014.	105
5.1	Cutting up a turtle in preparation for cooking. Mabuiag, 1898. © CUMAA T.Str. 41.	111
5.2	Uncovering food from an earth oven with Haddon's sketch identifying participants. Mer, 1898. © CUMAA T.Str. 234.	112
5.3	Photo and sketch of a re-enactment of the death of culture hero Kwoiam. Mabuiag, 1898. © CUMAA T.Str. 66.	114
5.4	Landscape marked through contact with Kwoiam. Pulu Island, off Mabuiag, 1898. © CUMAA T.Str. 84.	115
5.5	Sacred stone figures or <i>Au kosker zogo</i> . Waier, 1898. © CUMAA T.Str. 277.	118
5.6	<i>Tomog zogo</i> , used for divination, with officiates. Mer, 1898. © CUMAA T.Str. 290.	119
5.7	Gift of food to Expedition members. Mer, 1898 © CUMAA T.Str. 233.	123



x *List of illustrations*

5.8	Wedding of Jimmy and Aba at the old church. Mer, 1898. © CUMAA T.Str. 222.	124
5.9	Portrait of Tom and family. Mabuia, 1898. © CUMAA T.Str. 46.4.	125
5.10	First page of Haddon's personal photograph album 'Sunny Memories'. © CUMAA.	126
5.11	Men dancing as part of Queen Victoria's birthday celebrations. Mer, May 1898. © CUMAA T.Str. 219.	131
5.12	Women and children dressed for Queen Victoria's birthday celebrations. Mer, 1898. © CUMAA T.Str. 210.	132
5.13	Woman's back showing Snake Totem scarification. © CUMAA T.Str. 31.	133
6.1	Research data on colour nomenclature. © CUMAA.	140
6.2	Rivers testing for visual acuity using Haken's E. Mabuia, 1898. © CUMAA T.Str. 72.	142
6.3	Rivers demonstrating the colour wheel to Tom. Mabuia, 1898. © CUMAA T.Str. 71.	143
6.4	Seligman testing colour vision. Hula, Central District, British New Guinea, 1898. © CUMAA Papua C.D. 252.	144
7.1	Rivers testing visual perception. Mabuia, 1898. © CUMAA T.Str. 70.	162
7.2	Haddon's journal sketch of the anthropological laboratory. Mabuia, 1898. © CUMAA.	169
7.3	Child's drawing made for Rivers by Ellian. Mabuia, 1898. © CUMAA.	174
7.4	Rivers's notes with figures for reaction time. Mer, 1898. © CUMAA.	177
8.1	Ray's notebook with word-lists from British New Guinea and Torres Strait. Courtesy of the SOAS, University of London, S. H. Ray papers (PP MS 3).	184
8.2	Haddon and Ray with Pasi. Dauar, 1898. © CUMAA T.Str. 196.	188
8.3	London Missionary Society members Revd A. E. Hunt and Revd E. B. Savage. Mer, 1888. © CUMAA T.Str. 8a.	193
8.4	List of kinship terms compiled by Ray. © CUMAA.	197
8.5	Myers recording Malu songs with notations below. Mer, 1898. © CUMAA T.Str. 265.	199
9.1	Physical anthropology measurements. Hula, British New Guinea, 1898. © CUMAA.	208
9.2	Watercolour by Haddon of canoe <i>Yawaikan</i> . Mabuia, 1888. © CUMAA.	217
9.3	Wooden canoe prow ornament from Saibai. © CUMAA Z 9697.	218
9.4	Traditional beehive-shaped dwelling on Mer, 1898. © CUMAA T.Str. 122.	218
9.5	Canoe with mat sails. Mabuia, 1888. © CUMAA T.Str. 56a.	225
9.6	Seligman recording Hula children with the Edison Home Phonograph. British New Guinea, 1898. © CUMAA Papua C.D. 250.	228

Cambridge University Press

978-0-521-10386-2 - Cambridge and the Torres Strait: Centenary Essays on the 1898 Anthropological Expedition

Edited by Anita Herla and Sandra Rouse

Frontmatter

[More information](#)

## Maps

1.1	Torres Strait, showing the main islands.	8
8.1	Torres Strait, showing main linguistic and cultural boundaries. Courtesy of AIATSIS.	187
9.1	Map of Torres Strait and British New Guinea showing the main language groups.	204
9.2	Haddon's maps showing the distribution of cephalic index, canoe types and decorative art in British New Guinea.	212
9.3	Seligman's map showing the distribution of the peoples of Melanesia.	214
9.4	Haddon's later maps from 'Racial and cultural distributions in New Guinea'.	219

Cambridge University Press

978-0-521-10386-2 - Cambridge and the Torres Strait: Centenary Essays on the 1898 Anthropological Expedition

Edited by Anita Herle and Sandra Rouse

Frontmatter

[More information](#)

## Contributors

*Jeremy Beckett* is an Australian-based anthropologist and an Honorary Research Associate in the Department of Anthropology at the University of Sydney. His particular interest is indigenous minorities in former European settler colonies, including the ways they have been represented by anthropologists and other writers. He first undertook research in Torres Strait in 1958 and is the author of *Torres Strait Islanders: Custom and Colonialism* (1987).

*Elizabeth Edwards* curates photographs at the Pitt Rivers Museum, University of Oxford, and teaches critical history and theory of still photography. Her primary research interests are the historical relations between photography and anthropology and historiographical theory of photography. She is the editor of *Anthropology and Photography 1860–1920* (1992).

*Anita Herle* is curator of the anthropological collections at the Museum of Archaeology and Anthropology, University of Cambridge. She is the co-ordinator of a special exhibition to mark the centenary of the 1898 Cambridge Anthropological Expedition to the Torres Strait. She researches and writes on museology and the history of collections.

*Henrika Kuklick* is Professor in the Department of History and Sociology of Science at the University of Pennsylvania, where she teaches the history of the human sciences and the sociology of knowledge. The author of studies of American sociology, British colonialism and British anthropology, she is now writing a comparative analysis of early twentieth-century understandings of the relationship between peoples and places.

*Graham Richards* is Director, Centre for the History of Psychology, at Staffordshire University. He was the Chair of the British Psychological Society (History and Philosophy Section) from 1991 to 1994 and is the author of *'Race', Racism and Psychology: Towards a Reflexive History* (1997).

*Sandra Rouse* is a Research Associate at the Department of Social Anthropology, University of Cambridge. Her research interests include the theory of biography

Cambridge University Press

978-0-521-10386-2 - Cambridge and the Torres Strait: Centenary Essays on the 1898 Anthropological Expedition

Edited by Anita Herla and Sandra Rouse

Frontmatter

[More information](#)

Notes on contributors xiii

and anthropological perspectives on social and institutional histories. She is currently working on a critical biography of A. C. Haddon.

*Anna Shnukal* is ARC Australian Research Fellow, Aboriginal and Torres Strait Islander Studies Unit, University of Queensland. She has conducted extensive linguistic research in the Torres Strait and is author of *Broken, an Introduction to the Creole Language of the Torres Strait* (1988). She is currently writing a history of early contact in Torres Strait.

*James Urry* is Reader in Anthropology at the Victoria University of Wellington, New Zealand. He has carried out research and published on 'Russian' Mennonites in North America and Europe and on the history of British anthropology. He is the author of *Before Social Anthropology: Essays on the History of British Anthropology* (1993).

## Acknowledgements

There are numerous people and institutions who made this volume possible. The editors would like to thank Peter Gathercole, Keith Hart, Steven Hooper, Michael O'Hanlon, Stephen Hugh-Jones, Alan Macfarlane, David Phillipson, Stanley Ulijaszek and Marilyn Strathern for comments and advice at the early planning stage. Particular thanks are due to the contributors for their efforts and patience. Research assistance was provided by Alison Brown, Sudeshna Guha and, in particular, Judith Philp. The editors are grateful to Jeremy Beckett, Christopher Chippindale, Elizabeth Edwards, Peter Gathercole, Michael O'Hanlon, Simon Schaffer and James Urry for their valuable comments on various drafts, to Paul Whittle for explaining the psychological testing equipment, and to Bobbie Wells for information on Sidney Ray's teaching career. We thank the staff of the numerous libraries and archives who assisted with the research, in particular Godfrey Waller in the Manuscripts Room of the Cambridge University Library, and Aidan Baker, the Librarian of the Haddon Library, Faculty of Archaeology and Anthropology, University of Cambridge. We also thank the staff of the Cambridge University Museum of Archaeology and Anthropology who assisted with production of the volume in various ways, in particular Gwil Owen for photography and Robin Boast for technical assistance and general advice. Assistance with proof-reading was provided by Terry Hoare, Jean Smedley and Claire Warrior. We are most grateful to the British Academy, Crowther Beynon Fund, and the Humanities Research Centre, Australian National University, for financial support. Finally, and most of all, we would like to thank Simon Schaffer and Michael Rouse for their support and advice throughout.

Cambridge University Press

978-0-521-10386-2 - Cambridge and the Torres Strait: Centenary Essays on the 1898 Anthropological Expedition

Edited by Anita Herla and Sandra Rouse

Frontmatter

[More information](#)

## Abbreviations

AIATSIS	Australian Institute of Aboriginal and Torres Strait Islander Studies
BAAS	British Association for the Advancement of Science
BPS	British Psychological Society
CUL	Cambridge University Library
CUMAA	Cambridge University Museum of Archaeology and Anthropology
HP	Haddon Papers, Cambridge University Library
<i>J(R)AI</i>	<i>Journal of the (Royal) Anthropological Institute</i>
LMS	London Missionary Society
SOAS	School of Oriental and African Studies, University of London