

# The Theory of Composites

---

GRAEME W. MILTON  
*University of Utah*



PUBLISHED BY THE PRESS SYNDICATE OF THE UNIVERSITY OF CAMBRIDGE  
The Pitt Building, Trumpington Street, Cambridge, United Kingdom

CAMBRIDGE UNIVERSITY PRESS  
The Edinburgh Building, Cambridge CB2 2RU, UK  
40 West 20th Street, New York, NY 10011-4211, USA  
477 Williamstown Road, Port Melbourne, VIC 3207, Australia  
Ruiz de Alarcón 13, 28014 Madrid, Spain  
Dock House, The Waterfront, Cape Town 8001, South Africa

<http://www.cambridge.org>

© Cambridge University Press 2002

This book is in copyright. Subject to statutory exception  
and to the provisions of relevant collective licensing agreements,  
no reproduction of any part may take place without  
the written permission of Cambridge University Press.

First published 2002

Printed in the United Kingdom at the University Press, Cambridge

*Typeface* Times Roman 10/13 pt.    *System* L<sup>A</sup>T<sub>E</sub>X [AU]

*A catalog record for this book is available from the British Library.*

*Library of Congress Cataloging in Publication data*

Milton, Graeme Walter, 1956–

The theory of composites / Graeme W. Milton.

p. cm. – (Cambridge monographs on applied and computational mathematics ; 6)

Includes bibliographical references and index.

ISBN 0-521-78125-6

1. Composite materials. 2. Differential equations, Partial. 3. Homogenization (Differential equations)

I. Title. II. Series.

TA418.9.C6 M58 2001

620.1'18 – dc21

00-052936

ISBN 0 521 78125 6 hardback

Cover drawing of a composite material with a negative Poisson's ratio, used by permission from  
G. W. Milton and A. V. Cherkaev, "Which elasticity tensors are realizable?" *ASME Journal of Engineering  
Materials and Technology* **117**: 483–93 (1995).

---

---

# *Contents*

---

|  |              |
|--|--------------|
| <b>List of figures</b>   | <b>xix</b>   |
| <b>Preface</b>   | <b>xxiii</b> |
| References   | xxvi         |
| <b>1 Introduction</b>  | <b>1</b>     |
| 1.1 What are composites, and why study them?   | 1            |
| 1.2 What makes composites useful?  | 2            |
| 1.3 The effective tensors of composites  | 5            |
| 1.4 Homogenization from an intuitive viewpoint   | 7            |
| 1.5 Periodic homogenization  | 8            |
| 1.6 Homogenization in random media   | 11           |
| 1.7 Homogenization in the settings of $G$ -, $H$ -, and $\Gamma$ -convergence  | 12           |
| References   | 14           |
| <b>2 Some equations of interest and numerical approaches to solving them</b>   | <b>19</b>    |
| 2.1 The conductivity and related equations   | 19           |
| 2.2 Magnetotransport and convection enhanced diffusion   | 21           |
| 2.3 The elasticity equations   | 22           |
| 2.4 Thermoelectric, piezoelectric, and similar coupled equations   | 28           |
| 2.5 Thermoelasticity and poroelasticity  | 30           |
| 2.6 Pyroelectric equations and their relation to conductivity and magnetotransport equations in fibrous composites     | 33           |
| 2.7 The equivalence between elasticity in fibrous composites and two-dimensional piezoelectricity and thermoelasticity | 35           |
| 2.8 Numerical methods for finding effective tensors  | 38           |
| References   | 40           |

---

Sections or chapters marked with a dagger (†) can be skipped on a first reading of the book. They contain material that is not central to the book, or they include more advanced or more technical subject matter. However, they also sometimes address topics that are at the forefront of current research.

|          |  |           |
|----------|--|-----------|
| <b>3</b> | <b>Duality transformations in two-dimensional media</b>  | <b>47</b> |
| 3.1      | Duality transformations for conductivity   | 47        |
| 3.2      | Phase interchange identities for two-phase media   | 49        |
| 3.3      | The conductivity of two-dimensional polycrystals   | 50        |
| 3.4      | Duality transformations for pyroelectricity  | 51        |
| 3.5      | Duality transformations for elasticity   | 51        |
| 3.6      | Duality transformations for other elastic media  | 53        |
| 3.7      | The effective shear modulus of incompressible two-dimensional polycrystals and symmetric materials               | 55        |
|          | References   | 57        |
| <b>4</b> | <b>Translations and equivalent media</b>   | <b>59</b> |
| 4.1      | Translations applied to conductivity   | 59        |
| 4.2      | A formula for the Hall coefficient in two-dimensional polycrystals   | 60        |
| 4.3      | A formula for the Hall coefficient in two-phase, two-dimensional media†  | 61        |
| 4.4      | Inhomogeneous translations for three-dimensional conductivity  | 65        |
| 4.5      | Translations for elasticity  | 66        |
| 4.6      | A proof that the Young's modulus of a metal plate with holes does not depend on the Poisson's ratio of the metal | 67        |
| 4.7      | The elastic moduli of certain two-dimensional polycrystals and symmetric materials                               | 69        |
|          | References   | 70        |
| <b>5</b> | <b>Some microstructure-independent exact relations</b>   | <b>75</b> |
| 5.1      | The uniform field argument   | 75        |
| 5.2      | The bulk modulus of polycrystals with cubic symmetry   | 76        |
| 5.3      | The elastic moduli of a composite with a constant shear modulus  | 77        |
| 5.4      | The thermal expansion tensor and constant of specific heat in a composite of two isotropic phases                | 79        |
| 5.5      | The extension to nonlinear thermal expansion   | 81        |
| 5.6      | The thermal expansion tensor and specific heat in composites of two anisotropic phases                           | 82        |
| 5.7      | Exact thermoelastic relations for polycrystals   | 83        |
| 5.8      | The effective poroelastic moduli of two-phase media  | 84        |
| 5.9      | The elastic moduli of two-phase fibrous composites   | 86        |
| 5.10     | Exact relations for pyroelectric, conductivity, and magnetotransport equations                                   | 87        |
| 5.11     | The bulk modulus of a suspension of elastic particles in a fluid   | 88        |
|          | References   | 89        |
| <b>6</b> | <b>Exact relations for coupled equations</b>   | <b>93</b> |
| 6.1      | The covariance property of the effective tensor  | 93        |
| 6.2      | The reduction to uncoupled equations for two-phase composites with isotropic phases                              | 95        |
| 6.3      | Translations for coupled equations   | 97        |
| 6.4      | Elasticity as a special case of coupled field equations  | 98        |
| 6.5      | Equivalent coupled field problems in two dimensions  | 101       |

|          |   |            |
|----------|---|------------|
| 6.6      | The two-dimensional equations as a system of first-order partial differential equations         | 103        |
| 6.7      | The covariance property of the fundamental matrix   | 104        |
| 6.8      | Linking special classes of antiplane and planar elasticity problems                             | 105        |
| 6.9      | Expressing the fields in each phase in terms of analytic functions†                             | 106        |
|          | References  | 110        |
| <b>7</b> | <b>Assemblages of spheres, ellipsoids, and other neutral inclusions</b>                         | <b>113</b> |
| 7.1      | The coated sphere assemblage  | 113        |
| 7.2      | Multicoated sphere assemblages  | 117        |
| 7.3      | A phase interchange identity and inequality   | 118        |
| 7.4      | Assemblages of spheres with varying radial and tangential conductivity                          | 120        |
| 7.5      | The conductivity of Schulgasser's sphere assemblage   | 121        |
| 7.6      | The conductivity of an assemblage of spheres with an isotropic core and polycrystalline coating | 123        |
| 7.7      | Assemblages of ellipsoids and their associated Ricatti equations†                               | 124        |
| 7.8      | The conductivity of an assemblage of coated ellipsoids†   | 127        |
| 7.9      | A solution of the elasticity equations in the coated ellipsoid assemblage†                      | 130        |
| 7.10     | Expressions for the depolarization factors†   | 132        |
| 7.11     | Neutral coated inclusions   | 134        |
|          | References  | 139        |
| <b>8</b> | <b>Tricks for generating other exactly solvable microgeometries</b>                             | <b>143</b> |
| 8.1      | Modifying the material moduli so the field is not disturbed                                     | 143        |
| 8.2      | Assemblages of coated spheres and coated ellipsoids with anisotropic cores                      | 144        |
| 8.3      | Making an affine coordinate transformation  | 145        |
| 8.4      | The conductivity of an assemblage of coated ellipsoids with an anisotropic core and coating     | 148        |
| 8.5      | Making a curvilinear coordinate transformation†   | 149        |
| 8.6      | Quasiconformal mappings   | 152        |
| 8.7      | Generating microgeometries from fields  | 153        |
|          | References  | 155        |
| <b>9</b> | <b>Laminate materials</b>   | <b>159</b> |
| 9.1      | The history of laminates and why they are important   | 159        |
| 9.2      | Elementary lamination formulas  | 159        |
| 9.3      | Lamination formulas when the direction of lamination is arbitrary                               | 164        |
| 9.4      | Tartar's lamination formula for two-phase simple and coated laminates                           | 165        |
| 9.5      | Lamination formulas for elasticity, thermoelasticity, thermoelectricity, and piezoelectricity   | 167        |
| 9.6      | The lamination formula for a coated laminate with anisotropic coating and anisotropic core      | 171        |
| 9.7      | Reference transformations   | 172        |
| 9.8      | Explicit formulas for the conductivity and elasticity tensors of a coated laminate              | 173        |
| 9.9      | Ordinary differential laminates†  | 175        |
| 9.10     | Partial differential laminates†   | 177        |
|          | References  | 181        |

|           |  |            |
|-----------|--|------------|
| <b>10</b> | <b>Approximations and asymptotic formulas</b>  | <b>185</b> |
| 10.1      | Polarizability of a dielectric inclusion   | 185        |
| 10.2      | Dielectric constant of a dilute suspension of inclusions to the first order in the volume fraction       | 188        |
| 10.3      | Dielectric constant of a suspension of well-separated spheres to the second order in the volume fraction | 189        |
| 10.4      | The Maxwell approximation formula  | 192        |
| 10.5      | The effective medium approximation for the dielectric constant of an aggregate with spherical grains     | 195        |
| 10.6      | Average field approximations <sup>†</sup>  | 198        |
| 10.7      | The differential scheme for the effective conductivity of a suspension of spheres                        | 201        |
| 10.8      | The effective medium approximation as the attractor of a differential scheme                             | 203        |
| 10.9      | Approximation formulas for effective elastic moduli  | 204        |
| 10.10     | Asymptotic approximation formulas  | 207        |
| 10.11     | Critical exponents and universality  | 211        |
|           | References   | 213        |
| <br>      |  |            |
| <b>11</b> | <b>Wave propagation in the quasistatic limit</b>   | <b>221</b> |
| 11.1      | Electromagnetic wave propagation in the quasistatic limit  | 222        |
| 11.2      | Electromagnetic signals can propagate faster in a composite than in the constituent phases               | 228        |
| 11.3      | Elastic wave propagation in the quasistatic limit  | 230        |
| 11.4      | The correspondence principle and the attenuation of sound in a bubbly fluid                              | 233        |
| 11.5      | Transformation to real equations   | 234        |
| 11.6      | Correspondence with thermoelectricity in two dimensions  | 237        |
| 11.7      | Resonance and localized resonance in composites <sup>†</sup>   | 238        |
|           | References   | 242        |
| <br>      |  |            |
| <b>12</b> | <b>Reformulating the problem of finding effective tensors</b>  | <b>245</b> |
| 12.1      | Resolving a periodic field into its three component fields: The $\Gamma$ -operators                      | 245        |
| 12.2      | A wider class of partial differential equations with associated effective tensors <sup>†</sup>           | 248        |
| 12.3      | A related $\Gamma$ -operator   | 250        |
| 12.4      | The equation satisfied by the polarization field   | 251        |
| 12.5      | The effective tensor of dilute suspensions of aligned ellipsoids   | 252        |
| 12.6      | Expressions for the action of the $\Gamma$ -operators in real space                                      | 257        |
| 12.7      | A framework for defining effective tensors in a more general context                                     | 260        |
| 12.8      | Various solutions for the fields and effective tensor  | 261        |
| 12.9      | The duality principle  | 262        |
| 12.10     | The effective tensor of the adjoint equation   | 263        |
| 12.11     | Magnetotransport and its equivalence to thermoelectricity in two dimensions                              | 264        |
|           | References   | 267        |

|           |  |            |
|-----------|--|------------|
| <b>13</b> | <b>Variational principles and inequalities</b>   | <b>271</b> |
| 13.1      | Classical variational principles and inequalities  | 271        |
| 13.2      | Monotonicity of the effective tensor   | 274        |
| 13.3      | Null Lagrangians   | 274        |
| 13.4      | Variational principles for problems with a complex or other non-self-adjoint tensor                | 276        |
| 13.5      | Hashin-Shtrikman variational principles and inequalities   | 278        |
| 13.6      | Relation between the Hashin-Shtrikman and classical variational inequalities <sup>†</sup>          | 281        |
| 13.7      | Variational inequalities for nonlinear media   | 282        |
|           | References   | 286        |
| <br>      |  |            |
| <b>14</b> | <b>Series expansions for the fields and effective tensors</b>                                      | <b>291</b> |
| 14.1      | Expanding the formulas for the effective tensors and fields in power series                        | 291        |
| 14.2      | The series expansion in a composite to second order  | 292        |
| 14.3      | Thermoelastic composites for which the third and higher order terms in the expansion vanish        | 294        |
| 14.4      | A large class of exactly solvable materials with complex moduli <sup>†</sup>                       | 295        |
| 14.5      | Reducing the dimensionality of the problem <sup>†</sup>  | 297        |
| 14.6      | Convergence of the expansions and the existence and uniqueness of the fields and effective tensors | 298        |
| 14.7      | Convergence when $L$ is not self-adjoint <sup>†</sup>  | 300        |
| 14.8      | Extending the domain of convergence <sup>†</sup>   | 301        |
| 14.9      | A series with a faster convergence rate  | 302        |
| 14.10     | A related series that converges quickly  | 304        |
| 14.11     | Numerical computation of the fields and effective tensor using series expansions                   | 306        |
|           | References   | 309        |
| <br>      |  |            |
| <b>15</b> | <b>Correlation functions and how they enter series expansions<sup>†</sup></b>                      | <b>313</b> |
| 15.1      | Expressing the third-order term of the series expansion in terms of correlation functions          | 313        |
| 15.2      | The terms in the series expansion for random media   | 315        |
| 15.3      | Correlation functions for penetrable spheres   | 319        |
| 15.4      | Correlation functions for cell materials   | 320        |
| 15.5      | Reduced correlation functions  | 323        |
| 15.6      | Expansions for two-phase random composites with geometric isotropy                                 | 327        |
| 15.7      | Series expansions for cell materials with geometric isotropy                                       | 333        |
|           | References   | 335        |
| <br>      |  |            |
| <b>16</b> | <b>Other perturbation solutions</b>  | <b>341</b> |
| 16.1      | Effect of a small variation in the material moduli   | 341        |
| 16.2      | Application to weakly coupled equations of thermoelectricity or piezoelectricity                   | 342        |
| 16.3      | Application to computing the effective Hall coefficient  | 344        |
| 16.4      | The variance of the electric field in a two-phase conducting composite                             | 344        |
| 16.5      | Bounds on the conductivity tensor of a composite of two isotropic phases                           | 346        |
| 16.6      | The change in the effective tensor due to a shift in the phase boundary <sup>†</sup>               | 347        |

|           |  |            |
|-----------|--|------------|
| 16.7      | Perturbing the lamination directions in a multiple-rank laminate†                                  | 351        |
|           | References   | 352        |
| <b>17</b> | <b>The general theory of exact relations and links between effective tensors</b>                   | <b>355</b> |
| 17.1      | Links between effective tensors as exact relations: The idea of embedding                          | 355        |
| 17.2      | Necessary conditions for an exact relation   | 357        |
| 17.3      | Sufficient conditions for an exact relation  | 359        |
| 17.4      | An exact formula for the shear modulus of certain three-dimensional polycrystals                   | 361        |
| 17.5      | More exact relations for coupled equations†  | 362        |
| 17.6      | Exact relations with limited statistical information   | 363        |
| 17.7      | Additional necessary conditions for an exact relation†   | 365        |
|           | References   | 367        |
| <b>18</b> | <b>Analytic properties</b>   | <b>369</b> |
| 18.1      | Analyticity of the effective dielectric constant of two-phase media                                | 369        |
| 18.2      | Analyticity of the effective tensor for problems involving many eigenvalues                        | 370        |
| 18.3      | Integral representations for the effective tensor for problems involving two eigenvalues           | 375        |
| 18.4      | The correspondence between energy functions and microgeometries                                    | 381        |
| 18.5      | The correspondence between effective conductivity functions and microgeometries in two dimensions† | 383        |
| 18.6      | Integral representations for problems involving more than two eigenvalues: The trajectory method   | 387        |
| 18.7      | The lack of uniqueness in the choice of integral kernel: Constraints on the measure†               | 389        |
| 18.8      | Integral representations for a broader class of composite problems†                                | 391        |
|           | References   | 391        |
| <b>19</b> | <b><math>Y</math>-tensors</b>  | <b>397</b> |
| 19.1      | The $Y$ -tensor in two-phase composites  | 397        |
| 19.2      | The $Y$ -tensor in multiphase composites   | 399        |
| 19.3      | A formula for the effective thermoelastic tensor in terms of the elasticity $Y$ -tensor            | 403        |
| 19.4      | The Hilbert space setting for the $Y$ -tensor problem†   | 406        |
| 19.5      | The $Y$ -tensor polarization problem†  | 408        |
| 19.6      | Variational inequalities and principles for $Y$ -tensors†  | 409        |
|           | References   | 411        |
| <b>20</b> | <b><math>Y</math>-tensors and effective tensors in electrical circuits†</b>                        | <b>413</b> |
| 20.1      | The incidence matrix and the fields of potential drops and currents                                | 413        |
| 20.2      | The subdivision of bonds in an electrical circuit  | 415        |
| 20.3      | The $Y$ -tensor of the electrical circuit  | 417        |
| 20.4      | The effective tensor of the passive network  | 418        |
| 20.5      | The interpretation of the subspace $\mathcal{U}^{(1)}$   | 419        |
| 20.6      | The relation between the effective tensor and the $Y$ -tensor in an electrical circuit             | 421        |
|           | References   | 423        |



|           |  |            |
|-----------|--|------------|
| <b>21</b> | <b>Bounds on the properties of composites</b>  | <b>425</b> |
| 21.1      | Why are bounds useful?   | 425        |
| 21.2      | What are bounds?   | 426        |
| 21.3      | The role of bounds in structural optimization: A model problem   | 429        |
|           | References   | 433        |
| <br>      |  |            |
| <b>22</b> | <b>Classical variational principle bounds</b>  | <b>437</b> |
| 22.1      | Multiphase conducting composites attaining energy bounds   | 437        |
| 22.2      | Optimal bounds on the conductivity of isotropic polycrystals   | 439        |
| 22.3      | Optimal bounds on the bulk modulus of isotropic polycrystals   | 441        |
| 22.4      | The complete characterization of the set $G_f U e_0$ for $n$ -phase composites and polycrystals          | 444        |
| 22.5      | The $G$ -closure in two dimensions of an arbitrary set of conducting materials                           | 446        |
| 22.6      | Bounds on complex effective tensors <sup>†</sup>   | 450        |
|           | References   | 452        |
| <br>      |  |            |
| <b>23</b> | <b>Bounds from the Hashin-Shtrikman variational inequalities</b>   | <b>457</b> |
| 23.1      | Bounds on the effective conductivity of an isotropic composite of $n$ isotropic phases                   | 457        |
| 23.2      | Optimal bounds on the effective conductivity of an anisotropic composite of two isotropic phases         | 461        |
| 23.3      | Bounds for two-phase, well-ordered materials   | 462        |
| 23.4      | Bounds on the energy that involve only the volume fractions  | 465        |
| 23.5      | Bounds on the effective tensor that involve only the volume fractions                                    | 468        |
| 23.6      | Bounds for two-phase composites with non-well-ordered tensors <sup>†</sup>                               | 474        |
| 23.7      | Bounding the complex effective moduli of an isotropic composite of two isotropic phases <sup>†</sup>     | 476        |
| 23.8      | Using quasiconformal mappings to obtain bounds   | 480        |
| 23.9      | Optimal two-dimensional microgeometries: Reduction to a Dirichlet problem <sup>†</sup>                   | 481        |
| 23.10     | Bounds for cell polycrystals   | 487        |
|           | References   | 490        |
| <br>      |  |            |
| <b>24</b> | <b>Bounds using the compensated compactness or translation method</b>                                    | <b>499</b> |
| 24.1      | The translation bound and comparison bound   | 499        |
| 24.2      | Upper bounds on the bulk modulus of two-phase composites and polycrystals in two dimensions              | 500        |
| 24.3      | Allowing quasiconvex translations  | 503        |
| 24.4      | A lower bound on the effective bulk modulus of a three-dimensional, two-phase composite                  | 504        |
| 24.5      | Using the idea of embedding to extend the translation method   | 505        |
| 24.6      | Bounds on the conductivity tensor of a composite of two isotropic phases                                 | 506        |
| 24.7      | The translation bounds as a corollary of the comparison bounds <sup>†</sup>                              | 509        |
| 24.8      | Embedding in a higher order tensorial problem: A lower bound on the conductivity tensor of a polycrystal | 510        |
| 24.9      | A geometric characterization of translations <sup>†</sup>  | 512        |
| 24.10     | Translation bounds on the $Y$ -tensor  | 516        |

|           |  |            |
|-----------|--|------------|
| 24.11     | Deriving the trace bounds†   | 518        |
| 24.12     | Mixed bounds   | 519        |
| 24.13     | Volume fraction independent bounds on the conductivity of a mixture of two isotropic phases            | 520        |
| 24.14     | Bounds correlating different effective tensors   | 522        |
|           | References   | 525        |
| <b>25</b> | <b>Choosing the translations and finding microgeometries that attain the bounds†</b>                   | <b>529</b> |
| 25.1      | Other derivations of the translation bounds and their extension to nonlinear problems                  | 529        |
| 25.2      | Extremal translations  | 532        |
| 25.3      | Attainability criteria for the comparison bounds   | 535        |
| 25.4      | Isotropic polycrystals with minimum conductivity constructed from a fully anisotropic crystal          | 537        |
| 25.5      | Attainability criteria for the translation bounds  | 541        |
| 25.6      | Attainability criteria for the Hashin-Shtrikman-Hill bounds on the conductivity and bulk modulus       | 542        |
| 25.7      | A general procedure for finding translations that generate optimal bounds on sums of energies          | 544        |
| 25.8      | Translations for three-dimensional elasticity  | 547        |
|           | References   | 550        |
| <b>26</b> | <b>Bounds incorporating three-point correlation functions†</b>   | <b>553</b> |
| 26.1      | A brief history of bounds incorporating correlation functions  | 553        |
| 26.2      | Three-point bounds on the conductivity of a two-phase mixture  | 554        |
| 26.3      | Three-point bounds on the elastic moduli of a two-phase mixture  | 557        |
| 26.4      | Correlation function independent elasticity bounds: Improving the Hashin-Shtrikman-Hill-Walpole bounds | 558        |
| 26.5      | Using the translation method to improve the third-order bounds   | 560        |
| 26.6      | Third-order bounds from cross-property bounds  | 561        |
| 26.7      | General third-order bounds for a two-phase composite   | 562        |
| 26.8      | Third-order bounds for two-phase composites with geometrical isotropy                                  | 564        |
|           | References   | 564        |
| <b>27</b> | <b>Bounds using the analytic method</b>  | <b>569</b> |
| 27.1      | A brief history of bounds derived using the analytic method  | 569        |
| 27.2      | A topological classification of rational conductivity functions  | 571        |
| 27.3      | Bounds that incorporate a sequence of series expansion coefficients                                    | 573        |
| 27.4      | Relation between the bounds and Padé approximants  | 578        |
| 27.5      | Bounds incorporating known real or complex values of the function and series expansion coefficients    | 579        |
| 27.6      | Numerical computation of the bounds†   | 583        |
| 27.7      | Bounds for two-dimensional isotropic composites†   | 585        |
| 27.8      | Bounds for symmetric materials†  | 588        |
| 27.9      | Reducing the set of independent bounds   | 589        |

|           |  |            |
|-----------|--|------------|
| 27.10     | Proving elementary bounds using the method of variation of poles and residues  | 590        |
| 27.11     | Proving the bounds using the method of variation of poles and zeros  | 592        |
|           | References   | 596        |
| <b>28</b> | <b>Fractional linear transformations as a tool for generating bounds<sup>†</sup></b>   | <b>603</b> |
| 28.1      | Eliminating the constraints imposed by known series expansion coefficients   | 603        |
| 28.2      | Eliminating the constraints imposed by known real values of the function   | 607        |
| 28.3      | An alternative approach that treats the components on a symmetric basis  | 610        |
| 28.4      | The extension of the fractional linear transformations to matrix-valued analytic functions   | 614        |
|           | References   | 617        |
| <b>29</b> | <b>The field equation recursion method<sup>†</sup></b>   | <b>619</b> |
| 29.1      | Associations between operations on analytic functions and operations on subspace collections   | 619        |
| 29.2      | Hints of a deeper connection between analytic functions and subspace collections   | 624        |
| 29.3      | The field equation recursion method for two-phase composites   | 626        |
| 29.4      | Representing the operators as infinite-dimensional matrices  | 631        |
| 29.5      | The field equation recursion method for multiphase composites with isotropic components  | 633        |
| 29.6      | Bounds on the energy function of a three-phase conducting composite  | 638        |
|           | References   | 641        |
| <b>30</b> | <b>Properties of the <math>G</math>-closure and extremal families of composites</b>  | <b>643</b> |
| 30.1      | An equivalence between $G$ -closure problems with and without prescribed volume fractions  | 643        |
| 30.2      | Stability under lamination and the convexity properties of the $G$ -closure  | 645        |
| 30.3      | Characterizing the $G$ -closure through minimums of sums of energies and complementary energies  | 647        |
| 30.4      | Characterization of the $G$ -closure by single energy minimizations  | 650        |
| 30.5      | Extremal families of composites for elasticity: Proving that any positive-definite tensor can be realized as the effective elasticity tensor of a composite <sup>†</sup> | 652        |
| 30.6      | An extremal family of unimode materials for two-dimensional elasticity <sup>†</sup>  | 658        |
| 30.7      | An extremal family of bimode materials for two-dimensional elasticity <sup>†</sup>   | 663        |
| 30.8      | Extremal materials for three-dimensional elasticity  | 666        |
|           | References   | 667        |
| <b>31</b> | <b>The bounding of effective moduli as a quasiconvexification problem</b>  | <b>671</b> |
| 31.1      | Quasiconvexification problems in elasticity theory   | 671        |
| 31.2      | The independence of the quasiconvexified function on the shape and size of the region $\Omega$   | 674        |
| 31.3      | Replacing the affine boundary conditions with periodic boundary conditions   | 675        |

|      |   |            |
|------|---|------------|
| 31.4 | The equivalence of bounding the energy of multiphase linear composites and quasiconvexification                 | 677        |
| 31.5 | The link between the lamination closure and $\Lambda$ -convexification  | 679        |
| 31.6 | Quasiconvex hulls and rank-1 convex hulls   | 681        |
| 31.7 | Laminate fields built from rank-1 incompatible matrices   | 683        |
| 31.8 | Example of a rank-1 function that is not quasiconvex <sup>†</sup>   | 684        |
| 31.9 | A composite with an elasticity tensor that cannot be mimicked by a multiple-rank laminate material <sup>†</sup> | 690        |
|      | References  | 695        |
|      | <b>Author index</b>   | <b>699</b> |
|      | <b>Subject index</b>  | <b>711</b> |

---



---

## *List of figures*

---

|      |   |     |
|------|---|-----|
| 1.1  | A negative Poisson's ratio microstructure   | 3   |
| 1.2  | A porous structure with a negative thermal expansion coefficient  | 4   |
| 1.3  | A way to think about the function $\sigma_\epsilon(\mathbf{x}) = \sigma(\mathbf{x}, \mathbf{x}/\epsilon)$ | 9   |
| 3.1  | Two-dimensional structures with conductivity $\sigma_* = \sqrt{\sigma_1\sigma_2}$                         | 50  |
| 4.1  | The idea of translation   | 60  |
| 4.2  | Symmetrizing the conductivity tensor  | 63  |
| 4.3  | Poisson's ratio of plates containing holes  | 68  |
| 5.1  | Adjusting temperature and pressure so a bimetal strip does not bend                                       | 79  |
| 7.1  | The coated sphere as a neutral inclusion  | 114 |
| 7.2  | The Hashin coated sphere assemblage   | 114 |
| 7.3  | The doubly coated sphere assemblage for a three-component material  | 118 |
| 7.4  | The prototype sphere in the Schulgasser sphere assemblage   | 122 |
| 7.5  | The coated elliptical cylinder assemblage   | 125 |
| 7.6  | Inclusions that can and cannot be made neutral  | 136 |
| 7.7  | Neutral inclusions with perfect interfaces and an insulating core   | 138 |
| 8.1  | The stretched confocal coated ellipsoid assemblage  | 149 |
| 9.1  | A three-dimensional, two-phase laminate   | 160 |
| 9.2  | A two-dimensional, two-phase, second-rank laminate  | 160 |
| 9.3  | Maxwell's third-rank coated laminate  | 166 |
| 9.4  | Tree structure representing a finite-rank laminate  | 178 |
| 9.5  | Approximation to a partial differential laminate  | 179 |
| 10.1 | A material realizing the effective medium approximation   | 197 |
| 10.2 | Conductivity of a fluid-filled porous medium of fused glass beads   | 202 |
| 10.3 | Poisson's ratio of a checkerboard with dissimilar phases  | 208 |
| 10.4 | Treating an assemblage of inclusions as a resistor network  | 209 |
| 11.1 | Equivalence of lattices of coated cylinders and solid cylinders   | 241 |

|      |  |     |
|------|--|-----|
| 12.1 | Partitioning of space used to compute the action of $\Gamma$               | 258 |
| 16.1 | Perturbation of the position of an interface                               | 348 |
| 18.1 | Second-rank laminates that mimic the conductivity function                 | 383 |
| 18.2 | The eigenvectors of $\sigma_*$ can rotate as $\sigma_1/\sigma_2$ is varied | 384 |
| 20.1 | The Wheatstone bridge circuit  | 414 |
| 21.1 | Values of the average current in a two-dimensional polycrystal             | 427 |
| 21.2 | A model optimization problem   | 430 |
| 22.1 | A polycrystal with the largest isotropic effective conductivity            | 441 |
| 22.2 | Laminates in which either the strain or stress field equals $I$            | 443 |
| 22.3 | Values of the average current in a multiphase composite                    | 445 |
| 22.4 | Construction of $GU$ for two-dimensional conductivity                      | 448 |
| 23.1 | A three-phase assemblage attaining the Hashin-Shtrikman bounds             | 459 |
| 23.2 | The stiffest isotropic two-phase material                                  | 472 |
| 23.3 | Bounds on the complex bulk modulus   | 479 |
| 23.4 | Solving a Dirichlet problem to find optimal structures                     | 481 |
| 23.5 | The periodic Vigdergauz microstructure                                     | 486 |
| 23.6 | Sigmund's structures attaining the Hashin-Shtrikman bounds                 | 486 |
| 24.1 | Translations as ellipsoids in a cavity                                     | 514 |
| 24.2 | Translations as planes that lie above a cut cylinder                       | 515 |
| 24.3 | Convexification of the cut cylinder  | 516 |
| 25.1 | Ellipsoids corresponding to extremal translations                          | 534 |
| 27.1 | Bounds on the complex dielectric constant of a two-phase material          | 570 |
| 27.2 | Different topological types of rational conductivity functions             | 573 |
| 27.3 | Bounds on the conductivity of a cubic array of spheres                     | 576 |
| 28.1 | Action of the $Y$ -transformation in the complex plane                     | 613 |
| 29.1 | Bounds on the complex conductivity of a three-phase composite              | 640 |
| 30.1 | The characterization of $G$ -closures by energy minimums                   | 650 |
| 30.2 | The Poisson's ratio of the herringbone laminate and bounds                 | 653 |
| 30.3 | A simple laminate is a bimode extremal material                            | 655 |
| 30.4 | A bimode material supporting a compressive stress                          | 655 |
| 30.5 | A bimode material supporting a shear stress                                | 656 |
| 30.6 | A unimode material approximating to the oblique box laminate               | 659 |
| 30.7 | A unimode material approximating the herringbone laminate                  | 661 |
| 30.8 | A bimode material obtained by successive lamination                        | 664 |
| 30.9 | The diamond lattice of linkages  | 667 |
| 31.1 | The relation between the various convexifications of a function            | 674 |
| 31.2 | Why shape memory materials remember their shape                            | 682 |

*List of figures*

xxi

|      |  |     |
|------|--|-----|
| 31.3 | Building a field from gradients with no rank-1 connections   | 685 |
| 31.4 | The infinite-rank cyclic laminate field corresponding to the previous figure                         | 685 |
| 31.5 | A field $\nabla \mathbf{u}$ that cannot be mimicked by a laminate field                              | 687 |
| 31.6 | Values of $\langle \nabla \mathbf{u} \rangle$ for a laminate field taking the seven specified values | 688 |

---

# *Introduction*

---

## **1.1. What are composites, and why study them?**

Composites are prevalent in both nature and among engineered materials. Common metals are composites. When one breaks a rod of metal the polycrystalline nature becomes evident in the roughness of the surface of the break. The American Museum of Natural History in New York has a wonderful meteorite collection. Some of the polished cross sections through these meteorites clearly show the individual metal crystals. Martensite, which is typical of a shape memory material, has a laminar-type structure comprised of alternating layers of the two variants of martensite. Some rocks, such as sandstone, are aggregates of grains; other rocks, such as granite, are aggregates of crystals. In porous rocks the pores are often filled with a fluid such as salt water or oil. The study of composites in a geological context is important to the oil industry and for the study of earthquakes. Construction materials such as wood and concrete are composites. Bone is a porous composite. Fiberglass and lightweight carbon fiber composites have found applications ranging from the aerospace industry to sports equipment.

Colloidal suspensions, emulsions, foams, slurries, and clays are all examples of composites. Clouds, fog, mist, and rain are composites of air and water. High-altitude clouds are composites of air and ice crystals. Suspensions of volcanic dust in the upper atmosphere are known to significantly perturb temperatures around the earth. Air itself is an inhomogeneous medium with fluctuations in density that cause the twinkling of stars. Sea ice is a composite of ice and brine pockets, and modeling of its properties is important in global climate prediction. Wool and cotton are composites of fiber and air. Ceramics are composites. Solid rocket propellant is a composite of aluminum particles in an oxidizing matrix. Even chocolate chip ice cream is a composite. Basically, composites are materials that have inhomogeneities on length scales that are much larger than the atomic scale (which allows us to use the equations of classical physics at the length scales of the inhomogeneities) but which are essentially (statistically) homogeneous at macroscopic length scales, or least at some intermediate length scales. An alloy, having disorder on the atomic scale, is excluded from consideration (except if it is one of the phases in a larger composite, in which case it is treated as a homogeneous material). The book of Matthews and Rawlings (1994) gives many examples of natural and man-made composites.

Why do we study composites? One obvious answer is their usefulness, which will be discussed in the next section. A second, equally important reason is that what we learn from the field of composites could have far-reaching implications in many fields of science. Significant progress in improving our understanding of how microscopic behavior influences



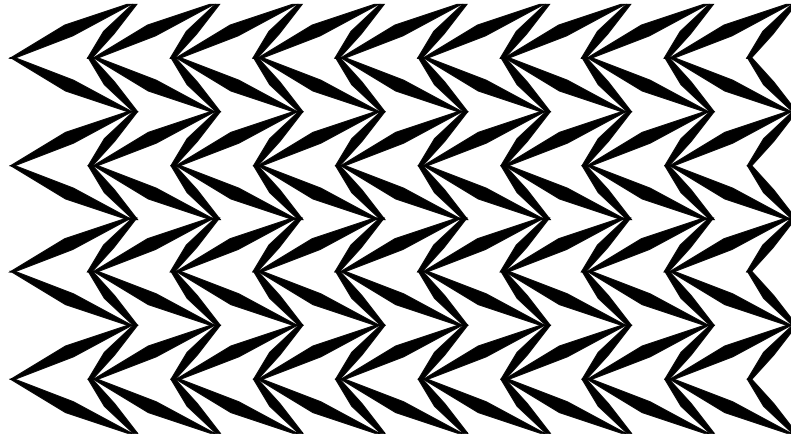
macroscopic behavior could impact our understanding of turbulence, of phase transitions involving many length scales, of how quantum behavior influences behavior on classical length scales, or, at the more extreme level, of how behavior on the Planck length scale,  $10^{-33}$  cm, influences behavior on the atomic scale,  $10^{-8}$  cm. While that may seem unlikely, it is hard to deny the impact that our understanding of classical physics had on the development of quantum mechanics. Therefore it is conceivable that a better understanding of classical questions involving multiple length scales could have large reverberations. A third compelling reason for studying composites is simply that there are many beautiful mathematical questions begging for answers. The solutions of some questions have already led to the development of new mathematical tools, and one can expect that the solution of the more challenging outstanding questions will open new mathematical frontiers.

The study of composites is a subject with a long history, which has attracted the interest of some of the greatest scientists. For example, Poisson (1826) constructed a theory of induced magnetism in which the body was assumed to be composed of conducting spheres embedded in a nonconducting material. Faraday (1839) proposed a model for dielectric materials that consisted of metallic globules separated by insulating material. Maxwell (1873) solved for the conductivity of a dilute suspension of conducting spheres in a conducting matrix. Rayleigh (1892) found a system of linear equations which, when solved, would give the effective conductivity of nondilute square arrays of cylinders or cubic lattices of spheres. Einstein (1905) calculated the effective shear viscosity of a suspension of rigid spheres in a fluid. The main historical developments are summarized in the articles of Landauer (1978) and Markov (2000).

## 1.2. What makes composites useful?

What gives composites their utility is that they often combine the attributes of the constituent materials. For example, suppose that one is given two isotropic conducting materials: a metal with high conductivity, and a plastic that is electrically insulating. If one places these two materials in alternating layers in a laminate, one obtains a highly anisotropic composite that has the conducting properties of the metal in directions parallel to the layers and the insulating properties of the plastic normal to the layers. Concrete is cheap and relatively light, but it breaks apart easily under tension. By contrast, steel is strong but expensive and heavy. By pouring the concrete around prestressed metal bars one obtains a composite, namely, reinforced concrete, that is cheap, relatively light, and strong. Wood is an example of a material that is strong in the fiber direction, but the fibers pull apart easily. By alternating layers of wood that are strong in the  $x_1$  direction with layers of wood that are strong in the  $x_2$  direction, one obtains a plywood that is strong in two directions, that is, in the  $(x_1, x_2)$ -plane.

By combining a compliant isotropic material that has low bulk and shear moduli with a stiff isotropic material that has high bulk and shear moduli, one can (with a judicious choice of microstructure) produce an elastically isotropic composite that effectively has the bulk modulus of the compliant phase and the shear modulus of the stiff phase. Such low-bulk and high-shear moduli materials are called negative Poisson's ratio materials: A rod of the material will expand laterally when stretched longitudinally. It was long a question of debate as to whether such materials could actually exist. Now their existence has been confirmed both experimentally and theoretically [see, for example, Lakes (1987) and Milton (1992) and references therein, and also section 30.5 on page 652]. A very simple two-dimensional microstructure that expands laterally when stretched longitudinally was designed and fabricated by Larsen, Sigmund, and Bouwstra (1997) and is illustrated in figure 1.1 on the facing page.



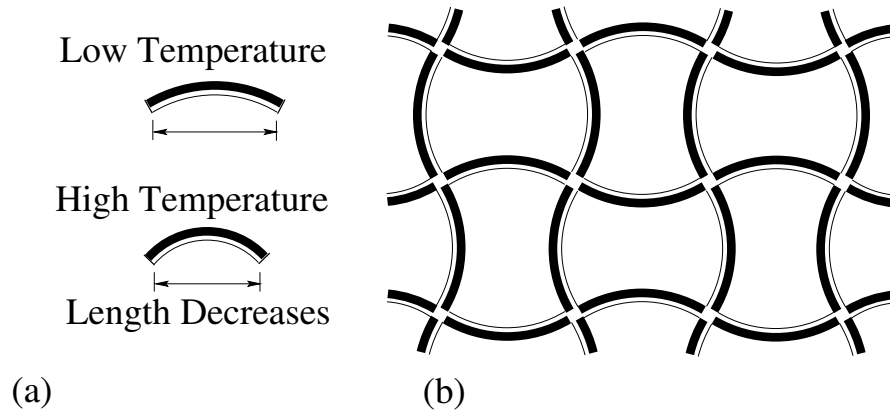
**Figure 1.1.** The two-dimensional microstructure of Larsen, Sigmund, and Bouwstra (1997), which will expand laterally when stretched longitudinally. Here the black region is relatively stiff and is surrounded by a void or very compliant material.

Sometimes the properties of a composite can be strikingly different from the properties of the constituent materials. To see this you can do the following experiment at home. Take a wine glass filled with air and strike it on the top (but not too hard) with a knife. It rings clearly. The same is true when it is filled with water. But add powdered Alka-Seltzer (or anything else that makes lots of bubbles) to the water and one just hears a thud. The acoustic properties of the bubbly fluid are quite different from those of either the air or the water. One application of this is to use a screen of bubbles to mask the engine or propeller noise of a submarine; as the oscillatory pressure in the sound wave compresses and decompresses each bubble, the water near each bubble is sheared, which dissipates the energy of the sound. The shear viscosity of the water is converted to the bulk viscosity of the bubbly fluid (Taylor 1954; see also section 11.4 on page 233). As another example, the beautiful red glass that one sees in some old church windows is a suspension of small gold particles in glass. The color arises not from any chemical effect but rather from the effective complex dielectric constant of the suspension at optical frequencies (Maxwell Garnett 1904). Opals consist of submicron spherical particles of silica arranged in a face-centered cubic array, diffracting light to create the brilliant colors that we see (Sanders 1964; Greer 1969). Similarly, the spines of a particular sea worm display a wonderful iridescence caused by light diffracting off a hexagonal array of fibers within each spine (Parker, McPhedran, McKenzie, Botten, and Nicorovici 2001).

By combining materials with positive thermal expansion coefficients it is possible to get a composite with a negative thermal expansion coefficient (Lakes 1996; Sigmund and Torquato 1996, 1997). This is most easily seen in a two-dimensional context. Following Lakes (1996) consider the structure of figure 1.2(b), where the cell walls consist of thin, stiff, curved metal strips with a low thermal expansion coefficient coated on the outside with a thick compliant strip of material with a high thermal expansion coefficient. As the composite is heated the strips become more tightly curved, as illustrated in figure 1.2(a) and consequently the material contracts, that is, it has a negative thermal expansion coefficient. Lakes also shows that it is possible to construct a porous composite with a significantly larger thermal expansion coefficient than either of the two phases. Bergman and Fel (1999) have shown that the

thermoelectric power factor in a two-phase composite can be greater than the thermoelectric power factors of both phases.

A composite of a piezoelectric material and an elastic material can have a dramatically larger electrical response to hydrostatic compression than either phase alone. For example, when a cylindrical rod of the piezoelectric material lead zirconate-titanate (PZT) is compressed longitudinally, an electric field is generated parallel to the axis of the rod. When it is compressed transversely an electric field is generated in the opposite direction. If the rod is immersed in a fluid and hydrostatic pressure is applied, then the rod is compressed both axially and transversely and the induced electric fields almost cancel out. This canceling is avoided if an array of such rods is embedded in a polymer matrix, which restricts the amount of transverse compression. The electric field generated in the composite can be measured and thus small variations in the fluid pressure can be detected. Such composites are useful in the design of piezoelectric hydrophones for detecting low-frequency underwater acoustic waves (Klicker, Biggers, and Newnham 1981; Avellaneda and Swart 1998). The performance is greatly enhanced by using a negative Poisson's ratio material in place of the polymer (Smith 1991; Gibiansky and Torquato 1997; Avellaneda and Swart 1998; Sigmund, Torquato, and Aksay 1998).



**Figure 1.2.** Two materials with positive thermal expansion coefficients can be combined in a porous structure to give a composite with a negative thermal expansion coefficient. The key observation, illustrated in (a), is that a thin, stiff, curved metal strip with low thermal expansion that is coated on the outside with a thick, compliant strip of material with high thermal expansion will, when heated, tighten its curvature and thereby reduce its length. By combining these elements as in (b), one obtains a porous structure with a negative thermal expansion coefficient. After Lakes (1996).

Composites can also exhibit product properties as defined by Albers (1973). A two-phase composite material exhibits a product property if the output from one phase acts as the input for the other phase. For example, following Albers (1973); Harshé, Dougherty and Newnham (1993a, 1993b); Avellaneda and Harshé (1994); and Nan (1994), consider a composite of the magnetostrictive material  $\text{CoFe}_2\text{O}_4$  and the piezoelectric material Barium Titanate,  $\text{BaTiO}_3$ . An applied magnetic field generates a strain in the  $\text{CoFe}_2\text{O}_4$  phase, which in turn generates a strain in the Barium Titanate phase, which thus produces an electric field. Thus the composite as a whole exhibits a magnetoelectric effect, where an applied magnetic effect generates an

electric field, although neither phase individually exhibits such an effect. As another example, consider a composite of a phase with a large thermal expansion coefficient combined with the piezoelectric material Barium Titanate. A temperature increase generates a strain in the first phase, which in turn causes the Barium Titanate to generate an electric field. Thus the composite as a whole exhibits a pyroelectric effect, where a temperature increase generates an electric field.

Sometimes it is advantageous to have composites with structure on a hierarchy of length scales. One sees such structural hierarchy in man-made structures such as the Eiffel tower and in biological structures such as bones and tendons (Lakes 1993). In this book we will come across many examples of optimal composites that have structural hierarchy. We will often explore the limits of what is possible by considering composites with structure on infinitely many length scales. These could be approximated by more realistic composites with structure on finitely many length scales.

It is hard to look into the future, but undoubtedly it will become increasingly possible to produce “designer composites,” where the microstructure has been tailored to produce desirable properties. Obviously a better understanding of the link between the microstructure and the macroscopic properties will be essential in this endeavor.

### 1.3. The effective tensors of composites

At present, quantum mechanics and quantum field theory provide the best description of matter on atomic, or subatomic, length scales. Yet it is well beyond the capability of modern computers to make a full simulation of the quantum mechanical equations to analyze the behavior of macroscopic bodies. The wave function for the electrons alone is described by a function in a  $3N$ -dimensional space, where  $N$  is the number of electrons in the body. (The factor of three arises because each electron has three spatial degrees of freedom.) The situation becomes worse when one brings the protons and neutrons into the picture, allowing for interactions with the electromagnetic, strong, and weak fields. All of this complexity is avoided when we use the equations of macroscopic physics, which can be regarded as homogenized quantum mechanical equations.

The situation is quite similar in composite materials, where, instead of using the equations of classical physics at the microscopic level, we use homogenized or effective equations at the macroscopic level. For example, in the context of electrical conductivity in a periodic microgeometry the microscopic equations, in the absence of internal current sources, take the form

$$\mathbf{j}(\mathbf{x}) = \boldsymbol{\sigma}(\mathbf{x})\mathbf{e}(\mathbf{x}), \quad \nabla \cdot \mathbf{j} = 0, \quad \nabla \times \mathbf{e} = 0, \quad (1.1)$$

where  $\mathbf{j}(\mathbf{x})$  is the current field,  $\mathbf{e}(\mathbf{x}) = \nabla\phi(\mathbf{x})$  is the electric field,  $-\phi(\mathbf{x})$  is the electrical potential, and  $\boldsymbol{\sigma}(\mathbf{x})$  is the conductivity tensor field. The first equation in (1.1) is called the constitutive relation. It governs the relation between the fields  $\mathbf{j}(\mathbf{x})$  and  $\mathbf{e}(\mathbf{x})$ , which satisfy the differential constraints imposed by the last two equations in (1.1). To avoid carrying around minus signs we will simply refer to  $\phi(\mathbf{x})$  as the electrical potential, although it should be kept in mind that it is actually  $-\phi(\mathbf{x})$ , which is the electrical potential. All of these fields have rapid oscillations on the length scale of the microstructure, and possibly slow variations on a much larger length scale. At the macroscopic level the equations take the same basic form:

$$\mathbf{j}_0(\mathbf{x}) = \boldsymbol{\sigma}_*\mathbf{e}_0(\mathbf{x}), \quad \nabla \cdot \mathbf{j}_0 = 0, \quad \nabla \times \mathbf{e}_0 = 0, \quad (1.2)$$

where  $\mathbf{j}_0(\mathbf{x})$  and  $\mathbf{e}_0(\mathbf{x})$  are local averages of  $\mathbf{j}$  and  $\mathbf{e}$  over a cube centered at  $\mathbf{x}$ , having size

large compared with the microstructure (we will make this more precise in subsequent sections). These averaged fields have the oscillations on the length scale of the microstructure smoothed out, but they retain slow variations. The first equation is the effective constitutive relation. The tensor field  $\sigma_*$  appearing in it is called the effective conductivity tensor of the medium because on a macroscopic length scale the composite behaves exactly like a homogeneous medium with conductivity  $\sigma_*$ , which only has variations on the macroscopic scale. It is defined through the solution to a cell problem. One looks for pairs of *periodic fields*  $\mathbf{j}(\mathbf{x})$  and  $\mathbf{e}(\mathbf{x})$ , which solve the conductivity equations in the periodic microgeometry. The relation

$$\langle \mathbf{j} \rangle = \sigma_* \langle \mathbf{e} \rangle$$

between the volume averages  $\langle \mathbf{j} \rangle$  and  $\langle \mathbf{e} \rangle$  of each pair  $\mathbf{j}$  and  $\mathbf{e}$ ; when evaluated for sufficiently many pairs, it serves to define the effective tensor  $\sigma_*$ . Thus the problem of solving (1.1) is decoupled into the problem of solving the macroscopic equations (1.2) and the problem of solving the microscopic cell problem. This decoupling makes numerical solutions much easier, and also allows one to intuitively think of the medium as effectively a homogeneous medium with conductivity  $\sigma_*$ .

The effective tensor  $\sigma_*$  is not just a simple local average of  $\sigma(\mathbf{x})$  but instead depends on it nonlinearly. The problem of determining  $\sigma_*$  from  $\sigma(\mathbf{x})$  is a nontrivial problem, even when only two isotropic conducting materials are present, that is, when  $\sigma(\mathbf{x})$  only takes the two values  $\sigma_1 \mathbf{I}$  and  $\sigma_2 \mathbf{I}$ , in which  $\mathbf{I}$  is the identity tensor and  $\sigma_1$  and  $\sigma_2$  are both positive. One might hope that if the two constituent materials were sufficiently “well mixed” there would be a universal mean-field formula giving  $\sigma_*$  in terms of  $\sigma_1$ ,  $\sigma_2$  and the volume fractions occupied by the materials. However, this is not the case. In the mixing of materials there is nothing equivalent to the Gibbs distribution in statistical physics. The probabilities of different configurations are highly dependent on the process by which the composite is formed (of which one typically has limited knowledge). An approximation for  $\sigma_*$  that works well for one class of materials will fail for another class of materials. The main focus of this book is how the behavior of tensor fields, such as  $\sigma(\mathbf{x})$ , on the microscopic scale influence the behavior of the associated effective tensors, such as  $\sigma_*$ , on the macroscopic scale.

It may happen that the equations on a macroscopic scale take a different form than the equations on the microscopic scale. For example, in a porous medium, and for low flow rates, the Stokes equations describe the fluid flow on the microscopic level whereas Darcy’s law (which says that the fluid velocity is a linear function of the pressure gradient) describes the fluid flow on the macroscopic level. We do not investigate such equations in this book. We instead focus on sets of equations that have the same form on the microscopic and macroscopic levels, consisting of fields linked by a constitutive equation, and satisfying appropriate differential constraints. In the conductivity example, the constitutive equation is the relation  $\mathbf{j} = \sigma \mathbf{e}$ , and the fields  $\mathbf{j}$  and  $\mathbf{e}$  satisfy the differential constraints that  $\nabla \cdot \mathbf{j} = 0$  and  $\nabla \times \mathbf{e} = 0$ .

We now endeavor to clarify the concepts of homogenization and effective tensors from various different viewpoints. For simplicity we confine our attention to the conductivity problem. The extension to the various other physical equations described in the next chapter is straightforward. The descriptions given here are sketchy, and are not meant to be a substitute for the many books on homogenization. On the other hand, a deep understanding of homogenization theory is not necessary for following the rest of the book, so don’t worry if you can’t understand some of the approaches outlined here.

### 1.4. Homogenization from an intuitive viewpoint

Homogenization from an intuitive viewpoint is described in the review article of Hashin (1983) and in the book of Nemat-Nasser and Hori (1999). We need to introduce three length scales:

- The microscale is characterized by lengths less than  $\ell_1$ , which must be chosen greater than the maximum size of inhomogeneities in the microstructure.
- The mesoscale, which is some intermediate length scale, is characterized by some length  $\ell_2$ , at which the composite appears “statistically homogeneous,” and at which the macroscopic fields have a slow variation. It is a convenient length scale for carrying out the mathematical analysis.
- The macroscale is characterized by lengths greater than  $\ell_3$ , which must be chosen less than the relevant dimensions of the body  $\Sigma$  being examined and less than the scale of variations in the macroscopic structure of the composite.

It is assumed that these three length scales are well-separated:

$$\ell_1 \ll \ell_2 \ll \ell_3.$$

Inside the composite is a potential  $\phi$  and an associated field  $\nabla\phi$  satisfying the elliptic equation

$$\nabla \cdot \boldsymbol{\sigma} \nabla \phi = \rho \quad \text{within } \Sigma, \quad (1.3)$$

and subject to, say, the Dirichlet boundary condition  $\phi(\boldsymbol{x}) = \psi(\boldsymbol{x})$  at the boundary of the body  $\Sigma$ , where  $\psi(\boldsymbol{x})$  is some prescribed potential. The length scales have been defined so that the conductivity tensor field  $\boldsymbol{\sigma}(\boldsymbol{x})$  has variations on the microscale and possibly on the macroscale, but no significant variations on the mesoscale. It is assumed that the source term  $\rho(\boldsymbol{x})$  and the prescribed values of  $\psi(\boldsymbol{x})$  at the boundary of the body have variations only on the macroscale, that is, only on length scales greater than  $\ell_3$ .

On the mesoscale we introduce the smoothing operation of local averaging. Let  $\Omega(\boldsymbol{x})$  denote a mesosized cubic window of side  $\ell_2$  and volume  $|\Omega| = \ell_2^3$  centered at the point  $\boldsymbol{x}$ . Given a field  $\boldsymbol{P}$ , we define

$$\langle \boldsymbol{P} \rangle_{\Omega}(\boldsymbol{x}) = \frac{1}{|\Omega|} \int_{\Omega(\boldsymbol{x})} \boldsymbol{P}(\boldsymbol{x}') d\boldsymbol{x}' = \frac{1}{|\Omega|} \int_{\Omega(0)} \boldsymbol{P}(\boldsymbol{x} + \boldsymbol{y}) d\boldsymbol{y} \quad (1.4)$$

as the average of  $\boldsymbol{P}$  over the window, where  $\boldsymbol{y} = \boldsymbol{x}' - \boldsymbol{x}$ . Suppose, for example, that we have a curl free field  $\boldsymbol{e}(\boldsymbol{x})$ . Since the locally averaged field  $\langle \boldsymbol{e} \rangle_{\Omega}(\boldsymbol{x})$  is an average over a set of fields  $\boldsymbol{e}(\boldsymbol{x} + \boldsymbol{y})$  parameterized by  $\boldsymbol{y}$ , each of which is a translation of  $\boldsymbol{e}(\boldsymbol{x})$  and therefore curl free, it follows that  $\langle \boldsymbol{e} \rangle_{\Omega}(\boldsymbol{x})$  is also curl free. Thus local averaging preserves the differential constraints on the fields. The locally averaged field is defined by (1.4) only within a region  $\Sigma'$  inside  $\Sigma$  consisting of all points  $\boldsymbol{x}$  such that  $\Omega(\boldsymbol{x})$  lies entirely inside  $\Sigma$ . Since  $\ell_2 \ll \ell_3$ , the boundary of  $\Sigma'$  will be close to the boundary of  $\Sigma$  and the locally averaged fields will have some smooth extension to the boundary of  $\Sigma$  (we are not trying to be too precise here).

The basic idea behind homogenization is that when the three length scales are well-separated the elliptic equation decouples into an equation on the macroscopic scale and a set of equations on the mesoscale. The expectation is that on the macroscopic scale the local average  $\langle \phi \rangle_{\Omega}$  of the potential  $\phi$  satisfies

$$\nabla \cdot \boldsymbol{\sigma}_* \nabla \langle \phi \rangle_{\Omega} = \rho \quad \text{within } \Sigma, \quad \langle \phi \rangle_{\Omega} = \psi \quad \text{on } \partial \Sigma,$$

for some appropriate choice of the effective conductivity tensor field  $\sigma_*(\mathbf{x})$ , which only has variations on the macroscale, and which only depends on values of  $\sigma$  within the window  $\Omega(\mathbf{x})$ , and not on  $\rho$  or  $\psi$ . Now, since the effective tensor  $\sigma_*(\mathbf{x})$  only has variations on the macroscopic scale, we only need calculate it at a set of representative sample points (avoiding those points where  $\Omega(\mathbf{x})$  intersects the boundary of  $\Sigma$ ) and then smoothly interpolate the function between these points and to the boundary of  $\Sigma$ . Then, because  $\sigma_*(\mathbf{x})$  only depends on  $\sigma$  within the window, we can calculate it at each representative sample point by considering a periodic medium obtained by periodically extending the material within the box  $\Omega(\mathbf{x})$  and looking for solutions of the conductivity equation (1.3) with  $\rho = 0$  and  $\nabla\phi$  being periodic. The effective tensor is obtained through the relation between the average fields,

$$\langle \sigma \nabla \phi \rangle_{\Omega} = \sigma_* \langle \nabla \phi \rangle_{\Omega}, \quad (1.5)$$

within this periodic medium. This relation defines the effective tensor at each representative sample point.

The decoupling of the equations means that we can replace the composite that has rapid oscillations in its moduli by an effective material with a slowly varying effective tensor field  $\sigma_*(\mathbf{x})$  without changing the local averages of the fields. The idea is that this approximation should be good when the scales are well-separated, and exact in the limit as  $\ell_2/\ell_1$  and  $\ell_3/\ell_2$  approach infinity.

Incidentally, notice that when  $\rho = 0$  any solution to the conductivity equations (1.3) remains a solution when  $\sigma(\mathbf{x})$  is replaced by  $\sigma'(\mathbf{x}) = \lambda\sigma(\mathbf{x})$ . It then follows from (1.5) that this medium with conductivity  $\sigma'$  will have effective conductivity  $\sigma'_* = \lambda\sigma_*$ . In other words, the effective conductivity has the homogeneity property that

$$\sigma'_* = \lambda\sigma_* \quad \text{when} \quad \sigma' = \lambda\sigma. \quad (1.6)$$

## 1.5. Periodic homogenization

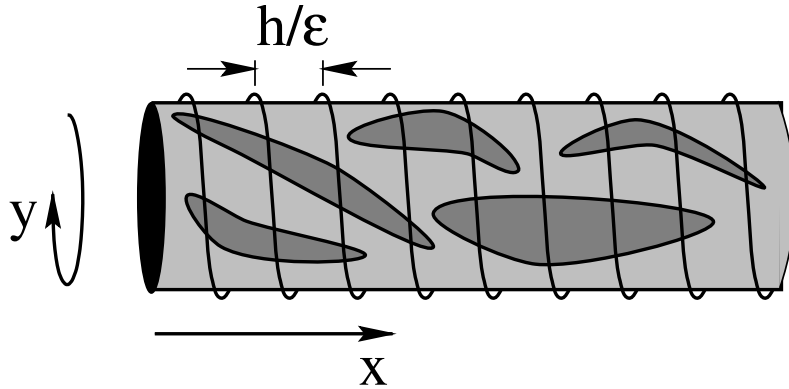
The intuitive viewpoint, while making good physical sense, needs some mathematical justification. A partial justification of the intuitive viewpoint is provided in the context of periodic homogenization. Periodic homogenization is described in the books of Bensoussan, Lions, and Papanicolaou (1978); Sanchez-Palencia (1980); Bakhvalov and Panasenko (1989); Persson, Persson, Svanstedt, and Wyller (1993); and Zhikov, Kozlov, and Oleinik (1994). The two-scale and multiscale treatments of Nguetseng (1989), Allaire (1992), and Allaire and Briane (1996), provide a rigorous basis for the method. One considers a sequence of problems, parameterized by a variable  $\epsilon$  that, roughly speaking, corresponds to the size of the microstructure, and one examines what happens in the limit as  $\epsilon$  tends to zero. The conductivity tensor field and the potential are assumed to be functions of both the variable  $\mathbf{x}$ , called the macroscopic or slow variable, and the variable  $\mathbf{y} = \mathbf{x}/\epsilon$ , called the microscopic or fast variable. Roughly speaking, the dependence of the fields on  $\mathbf{x}$  captures their macroscopic variation while the dependence on  $\mathbf{y}$  captures their microscopic or local variation.

In each problem the body  $\Sigma$  is filled by a material with conductivity tensor

$$\sigma_{\epsilon}(\mathbf{x}) = \sigma(\mathbf{x}, \mathbf{x}/\epsilon), \quad (1.7)$$

where for fixed  $\mathbf{x}$ ,  $\sigma(\mathbf{x}, \mathbf{y})$  is periodic in the variable  $\mathbf{y}$ , say, with a square unit cell of side length  $h$  independent of  $\mathbf{x}$ . When  $\epsilon$  is very small this means that  $\sigma_{\epsilon}(\mathbf{x})$  is almost periodic in  $\mathbf{x}$  on the microscale, that is, on length scales of the order of  $h/\epsilon$ . Some insight into the

geometrical interpretation of this can be gained by considering the case when  $\boldsymbol{x}$  and  $\boldsymbol{y}$  are one-dimensional variables. Then, as sketched in figure 1.3,  $\sigma(\boldsymbol{x}, \boldsymbol{y})$  is defined on a cylinder and  $\sigma_\epsilon(\boldsymbol{x})$  represents the values of  $\sigma(\boldsymbol{x}, \boldsymbol{y})$  along a tightly wound spiral on the cylinder, which gets tighter as  $\epsilon \rightarrow 0$ . (This geometrical interpretation was communicated to me by Luc Tartar.)



**Figure 1.3.** When  $\boldsymbol{x}$  and  $\boldsymbol{y}$  are one-dimensional, the function  $\sigma(\boldsymbol{x}, \boldsymbol{y})$  can be regarded as lying on the surface of a cylinder of circumference  $h$ . As illustrated here, the function  $\sigma(\boldsymbol{x}, \boldsymbol{y})$  could, for example, take two different values, one value in the darker shaded region and a different value in the lighter shaded region. The function  $\sigma_\epsilon(\boldsymbol{x}) = \sigma(\boldsymbol{x}, \boldsymbol{x}/\epsilon)$  represents the values of the function along a tightly wound spiral on the cylinder.

To obtain the right homogenized equations one has to be careful. This is illustrated by the following example. Consider a connected cubic network of thin conducting rods, which is diagonally displaced from a second connected cubic network of conducting rods, with a different effective tensor, so that the two networks do not touch each other. The surrounding material is assumed to be nonconducting. It is clear that the electrical potential field on the second network is independent of the potential field on the first network, and thus one would expect the homogenized equations to be a pair of uncoupled conductivity equations, one for each network. If there are suitably thin bridges linking the two networks, then Khruslov (1978), Briane (1998), and Briane and Mazliak (1998) have shown that the homogenized equations are coupled.

Some restrictions of the conductivity field  $\sigma_\epsilon(\boldsymbol{x})$  are needed to avoid such strange homogenized equations. For simplicity we assume that  $\sigma_\epsilon(\boldsymbol{x})$  is a symmetric matrix-valued function satisfying the ellipticity condition

$$\alpha \boldsymbol{I} \leq \sigma_\epsilon(\boldsymbol{x}) \leq \beta \boldsymbol{I} \text{ for all } \epsilon \text{ and } \boldsymbol{x}, \quad (1.8)$$

for some positive  $\alpha$  and  $\beta$  independent of both  $\epsilon$  and  $\boldsymbol{x}$ . We then have a sequence of electrical potentials  $\phi_\epsilon(\boldsymbol{x})$  satisfying the elliptic equations

$$\nabla \cdot \sigma_\epsilon \nabla \phi_\epsilon = \rho \text{ within } \Sigma, \quad \phi_\epsilon = \psi \text{ on } \partial \Sigma, \quad (1.9)$$

where the source term  $\rho(\boldsymbol{x})$  and the potential  $\psi(\boldsymbol{x})$  at the boundary of  $\Sigma$  are prescribed and assumed to be independent of  $\epsilon$ .



To solve for the potential in the limit  $\epsilon \rightarrow 0$  one uses a multiple-scale analysis and looks for a solution of the form

$$\phi_\epsilon(\mathbf{x}) = \phi_0(\mathbf{x}, \mathbf{x}/\epsilon) + \epsilon\phi_1(\mathbf{x}, \mathbf{x}/\epsilon) + \epsilon^2\phi_2(\mathbf{x}, \mathbf{x}/\epsilon) + \dots,$$

where for fixed  $\mathbf{x}$  the functions  $\phi_i(\mathbf{x}, \mathbf{y})$ ,  $i = 0, 1, 2, \dots$ , are periodic functions of  $\mathbf{y}$  with the same periodicity as  $\sigma(\mathbf{x}, \mathbf{y})$ . By substituting this expansion and (1.7) into (1.9) and separating terms having coefficients sharing the same power of  $\epsilon$  one obtains a series of equations. I will not go through the analysis, since it is contained in the above-cited books. One finds that  $\phi_0(\mathbf{x}, \mathbf{y})$  depends only on  $\mathbf{x}$ , that is,  $\phi_0(\mathbf{x}, \mathbf{y}) = \phi_0(\mathbf{x})$ , where  $\phi_0(\mathbf{x})$  satisfies

$$\nabla \cdot \sigma_* \nabla \phi_0 = \rho \text{ within } \Sigma, \quad \phi_0 = \psi \text{ on } \partial\Sigma,$$

in which the effective conductivity tensor field  $\sigma_*(\mathbf{x})$  is obtained at each point  $\mathbf{x}$  by solving the auxiliary ‘‘cell problem.’’ Given an applied field  $\mathbf{e}_0$ , the cell problem consists of finding the function  $\phi_1(\mathbf{e}_0; \mathbf{y})$  periodic in  $\mathbf{y}$ , which solves

$$\nabla_{\mathbf{y}} \cdot \sigma(\mathbf{x}, \mathbf{y}) \nabla_{\mathbf{y}} [e_0 \cdot \mathbf{y} + \phi_1(\mathbf{e}_0; \mathbf{y})] = 0,$$

where  $\nabla_{\mathbf{y}} \cdot$  and  $\nabla_{\mathbf{y}}$  are the divergence and gradient with respect to  $\mathbf{y}$ , keeping  $\mathbf{x}$  fixed. Once the cell problem is solved for a basis of applied fields  $\mathbf{e}_0$ , the effective tensor is obtained through the relation

$$\langle \sigma(\mathbf{x}, \mathbf{y}) \nabla_{\mathbf{y}} [e_0 \cdot \mathbf{y} + \phi_1(\mathbf{e}_0; \mathbf{y})] \rangle = \sigma_* \langle \nabla_{\mathbf{y}} [e_0 \cdot \mathbf{y} + \phi_1(\mathbf{e}_0; \mathbf{y})] \rangle,$$

where the averages are over  $\mathbf{y}$ , keeping  $\mathbf{x}$  fixed. Since  $\phi_1$  is periodic in  $\mathbf{y}$ , it follows that the average value of  $\nabla_{\mathbf{y}} \phi_1$  is zero. Therefore we can rewrite the relation as

$$\langle \sigma(\mathbf{x}, \mathbf{y}) \nabla_{\mathbf{y}} [e_0 \cdot \mathbf{y} + \phi_1(\mathbf{e}_0; \mathbf{y})] \rangle = \sigma_* e_0.$$

The next function appearing in the series expansion is found to be

$$\phi_1(\mathbf{x}, \mathbf{y}) = \phi_1(\nabla \phi_0(\mathbf{x}); \mathbf{y}).$$

Thus the solution of the cell problem not only gives the effective tensor  $\sigma_*$  needed to compute  $\phi_0$ , but it also gives the leading correction  $\phi_1$  to the potential in the series expansion. The results of this multiple-scale analysis can be verified by more rigorous methods [see, for example, Bensoussan, Lions, and Papanicolaou (1978); Tartar (1978); Nguetseng (1989); Allaire (1992); Allaire and Briane (1996); and Murat and Tartar (1997)]. One can extend the analysis to higher powers in  $\epsilon$  and thereby obtain a solution that captures the correct asymptotic behavior as  $\epsilon \rightarrow 0$ . A rigorous justification of the resulting higher order homogenized solutions has been provided by Bakhvalov and Panasenko (1989). Smyshlyaev and Cherednichenko (2000) show how the higher order homogenized solutions also can be justified variationally, by using an energy that depends on higher order gradients.

Notice that while the potential  $\phi_\epsilon(\mathbf{x})$  converges to  $\phi_0(\mathbf{x})$  as  $\epsilon \rightarrow 0$ , the electric field  $\nabla \phi_\epsilon(\mathbf{x})$  does not converge to  $\nabla \phi_0(\mathbf{x})$ . Indeed,  $\nabla \phi_\epsilon(\mathbf{x})$  has rapid oscillations on the microscale, whereas  $\nabla \phi_0(\mathbf{x})$  does not. Nevertheless, there is convergence in a weak sense. A sequence of fields  $\mathbf{e}_\epsilon(\mathbf{x})$  is said to weakly converge to  $\mathbf{e}_0(\mathbf{x})$  if

$$\lim_{\epsilon \rightarrow 0} \int g(\mathbf{x}) \mathbf{e}_\epsilon(\mathbf{x}) d\mathbf{x} = \int g(\mathbf{x}) \mathbf{e}_0(\mathbf{x}) d\mathbf{x},$$

for all square integrable test functions  $g(\mathbf{x})$ . With this definition  $\nabla\phi_\epsilon(\mathbf{x})$  converges weakly to  $\nabla\phi_0(\mathbf{x})$ . Roughly speaking, taking the weak limit of a sequence of functions smoothes out the rapid oscillations; the weak limit represents the locally averaged function. To clarify the concept of weak convergence, let us consider a simple mathematical example, which is not intended to have any deeper physical significance: For any vector  $\mathbf{n} \neq 0$  the sequence of functions

$$f_\epsilon(\mathbf{x}) = \frac{2 \cos^2(\mathbf{x} \cdot \mathbf{n}/\epsilon)}{|\mathbf{x}|^4 + 1}$$

converges weakly as  $\epsilon \rightarrow 0$  to the function

$$f_0(\mathbf{x}) = \frac{1}{|\mathbf{x}|^4 + 1}.$$

Of course the assumption (1.8) is too strong since it excludes all composite materials with voids. The homogenization of such perforated structures, including cellular materials, is treated in the books of Oleinik, Shamaev, and Yosifian (1992); Zhikov, Kozlov, and Oleinik (1994); and Cioranescu and Saint Jean Paulin (1999).

## 1.6. Homogenization in random media

In random media the analog of periodicity is statistical homogeneity or stationarity. Homogenization in random media is described with varying degrees of rigor in the books of Beran (1968); Bensoussan, Lions, and Papanicolaou (1978); Bakhvalov and Panasenko (1989); and Zhikov, Kozlov, and Oleinik (1994), and in the papers of Kozlov (1978), Papanicolaou and Varadhan (1982), and Golden and Papanicolaou (1983).

The conductivity tensor field  $\boldsymbol{\sigma}(\mathbf{x}, \omega)$  is a function of both  $\mathbf{x}$  and the particular microstructure realization  $\omega$  in the ensemble being considered. It is stationary if, given any set of points  $\mathbf{x}_1, \mathbf{x}_2, \dots, \mathbf{x}_m$  and any vector  $\mathbf{h}$ , the joint distribution of the set of tensors

$$\boldsymbol{\sigma}(\mathbf{x}_1, \omega), \boldsymbol{\sigma}(\mathbf{x}_2, \omega), \dots, \boldsymbol{\sigma}(\mathbf{x}_m, \omega)$$

and the joint distribution of the set of tensors

$$\boldsymbol{\sigma}(\mathbf{x}_1 + \mathbf{h}, \omega), \boldsymbol{\sigma}(\mathbf{x}_2 + \mathbf{h}, \omega), \dots, \boldsymbol{\sigma}(\mathbf{x}_m + \mathbf{h}, \omega)$$

are the same as  $\omega$  varies over all realizations weighted according to a probability measure  $\mathcal{P}(\omega)$ . This stationarity will be guaranteed if  $\mathcal{P}(\omega)$  is invariant under translations of the microstructure, that is, if, roughly speaking, a given microstructure and the translated microstructure have the same probability of occurring. The case of periodic homogenization, where  $\boldsymbol{\sigma}(\mathbf{x})$  is periodic in  $\mathbf{x}$ , can be treated in this framework by letting the ensemble consist of  $\boldsymbol{\sigma}(\mathbf{x})$  and all of its translates  $\boldsymbol{\sigma}(\mathbf{x} + \mathbf{h})$  weighted with uniform probability density  $\mathcal{P}$ .

The equations of interest are now

$$\nabla \cdot \boldsymbol{\sigma}(\mathbf{x}/\epsilon, \omega) \nabla \phi_\epsilon(\mathbf{x}, \omega) = \rho(\mathbf{x}), \quad \phi_\epsilon(\mathbf{x}, \omega) = \psi(\mathbf{x}) \text{ on } \partial\Sigma,$$

as  $\omega$  varies over all microstructure realizations. Here  $\epsilon$  can be regarded as a (continuous or discrete) parameter that sets the scale of the microstructure but does not necessarily represent a characteristic length. The homogenized fields are defined by the limits

$$\begin{aligned} \phi_0(\mathbf{x}) &= \lim_{\epsilon \rightarrow 0} E\{\phi_\epsilon(\mathbf{x}, \omega)\}, \\ \mathbf{e}_0(\mathbf{x}) &= \lim_{\epsilon \rightarrow 0} E\{\nabla \phi_\epsilon(\mathbf{x}, \omega)\}, \\ \mathbf{j}_0(\mathbf{x}) &= \lim_{\epsilon \rightarrow 0} E\{\boldsymbol{\sigma}(\mathbf{x}/\epsilon, \omega) \nabla \phi_\epsilon(\mathbf{x}, \omega)\}, \end{aligned}$$

where  $E\{\cdot\}$  denotes the expectation value, or ensemble average:

$$E\{f(\mathbf{x}, \omega)\} \equiv \int f(\omega)\mathcal{P}(\omega)d\omega,$$

where the integration is over all realizations  $\omega$  in the ensemble. The homogenized potential  $\phi_0(\mathbf{x})$  satisfies the homogenized equation

$$\nabla \cdot \boldsymbol{\sigma}_* \nabla \phi_0 = \rho \text{ within } \Sigma, \quad \phi_0(\mathbf{x}) = \psi(\mathbf{x}) \text{ on } \partial \Sigma,$$

or, equivalently,

$$\mathbf{j}_0 = \boldsymbol{\sigma}_* \mathbf{e}_0, \quad \nabla \cdot \mathbf{j}_0 = \rho, \quad \mathbf{e}_0 = \nabla \phi_0, \quad \phi_0(\mathbf{x}) = \psi(\mathbf{x}) \text{ on } \partial \Sigma,$$

where the effective tensor  $\boldsymbol{\sigma}_*$  is independent of  $\mathbf{x}$  and  $\omega$  and is determined by finding *stationary* potentials  $\phi_1(\mathbf{x}, \omega)$  that solve

$$\nabla \cdot \boldsymbol{\sigma}(\mathbf{x}/\epsilon, \omega)[\mathbf{e}_0 + \nabla \phi_1(\mathbf{x}, \omega)] = 0,$$

for various constant fields  $\mathbf{e}_0$  (independent of  $\mathbf{x}$  and  $\omega$ ), by calculating

$$\mathbf{j}_0 = E\{\boldsymbol{\sigma}(\mathbf{x}/\epsilon, \omega)[\mathbf{e}_0 + \nabla \phi_\epsilon(\mathbf{x}, \omega)]\},$$

which gives  $\boldsymbol{\sigma}_*$  via the relation

$$\mathbf{j}_0 = \boldsymbol{\sigma}_* \mathbf{e}_0.$$

When  $\epsilon$  is small the potential  $\phi_0(\mathbf{x})$  is not just a good approximation to the expectation value of  $\phi_\epsilon(\mathbf{x}, \omega)$ . Kozlov (1978) and Papanicolaou and Varadhan (1982) establish the stronger result that

$$\int_{\Sigma} E\{|\phi_\epsilon(\mathbf{x}, \omega) - \phi_0(\mathbf{x})|^2\}d\mathbf{x} = 0,$$

which shows that when  $\epsilon$  is sufficiently small  $\phi_0(\mathbf{x})$  is almost everywhere a good approximation to nearly every field  $\phi_\epsilon(\mathbf{x}, \omega)$  in the ensemble.

Papanicolaou and Varadhan (1982) and Golden and Papanicolaou (1983) have established that this definition of the effective conductivity tensor is consistent with the more usual definition where a cubic sample of the composite is taken and then  $\boldsymbol{\sigma}_*$  is obtained in an infinite volume limit as the size the cube tends to infinity.

### 1.7. Homogenization in the settings of $G$ -, $H$ -, and $\Gamma$ -convergence

The sequences of microstructures associated with periodic homogenization and homogenization in random media are rather special. Each element in the sequence  $\boldsymbol{\sigma}_\epsilon(\mathbf{x}) = \boldsymbol{\sigma}(\mathbf{x}, \mathbf{x}/\epsilon)$  or the sequence  $\boldsymbol{\sigma}_\epsilon(\mathbf{x}, \omega) = \boldsymbol{\sigma}(\mathbf{x}/\epsilon, \omega)$  has oscillations in the microstructure on lengths of the order of  $\epsilon$ . One might wonder if homogenization can be generalized in some way to essentially arbitrary sequences of tensor fields. The frameworks of  $G$ -,  $H$ -, and  $\Gamma$ -convergence provide such a generalization. Spagnolo (1968) first introduced  $G$ -convergence. It is associated with the convergence of Green's functions, which is what the  $G$  signifies. Murat and Tartar (Tartar 1978; Murat and Tartar 1985, 1997) introduced  $H$ -convergence ( $H$  for homogenization), which permits problems with nonsymmetric conductivity tensors to be treated. De Giorgi (1975) introduced  $\Gamma$ -convergence, which is an abstract notion of functional convergence, not just limited to homogenization. These approaches provide a rigorous justification

for the intuitive viewpoint of homogenization in a very general setting. They are described, for example, in the articles of De Giorgi (1984), Allaire (1997), and Murat and Tartar (1997); in the books of Buttazzo (1989), Dal Maso (1993), Zhikov, Kozlov, and Oleinik (1994), and Attouch (1984); and in the lecture notes of Raitums (1997). Allaire (1997), in particular, provides an excellent short summary of the different approaches.

To define  $G$ -,  $H$ -, and  $\Gamma$ -convergence consider a sequence of symmetric second-order tensor fields  $\sigma_\epsilon(\mathbf{x})$  such that (1.8) is satisfied for some choice of positive constants  $\alpha$  and  $\beta$ . This sequence is said to  $G$ -converge to a symmetric tensor field  $\sigma_*(\mathbf{x})$  if and only if for any  $\rho(\mathbf{x})$  (in an appropriate space) the potentials  $\phi_\epsilon$  that solve the Dirichlet problem

$$\nabla \cdot \sigma_\epsilon \nabla \phi_\epsilon = \rho \text{ within } \Sigma, \quad \phi_\epsilon = 0 \text{ on } \partial \Sigma,$$

converge to a potential  $\nabla \phi_0$  that satisfies

$$\nabla \cdot \sigma_* \nabla \phi_0 = \rho \text{ within } \Sigma, \quad \phi_0 = 0 \text{ on } \partial \Sigma.$$

This definition is motivated by the theorem of Spagnolo (1968) that *any* sequence  $\sigma_\epsilon(\mathbf{x})$  satisfying (1.8) has a subsequence that  $G$ -converges to a tensor field  $\sigma_*(\mathbf{x})$ . Roughly speaking, in those regions where  $\sigma_\epsilon(\mathbf{x})$  converges to a fixed tensor field,  $\sigma_*(\mathbf{x})$  equals that tensor field; whereas in those regions where  $\sigma_\epsilon(\mathbf{x})$  develops oscillations on finer and finer length scales,  $\sigma_*(\mathbf{x})$  equals the associated effective tensor. If in a subregion the value of  $\sigma_\epsilon(\mathbf{x})$  alternates between two different fixed values as  $\epsilon$  is decreased, one chooses the subsequence so that only one of these fixed values is selected.

The sequence is said to  $H$ -converge to a symmetric tensor field  $\sigma_*(\mathbf{x})$  if and only if on each bounded domain  $\Sigma$  all pairs of sequences of square integrable vector fields  $\mathbf{j}_\epsilon$  and  $\mathbf{e}_\epsilon$  on  $\Sigma$  for which

- $\mathbf{j}_\epsilon = \sigma_\epsilon \mathbf{e}_\epsilon$  is satisfied for all  $\epsilon$ ;
- $\nabla \cdot \mathbf{j}_\epsilon$  and  $\nabla \times \mathbf{e}_\epsilon$  remain within compact sets in appropriate Hilbert spaces (which guarantees that  $\nabla \cdot \mathbf{j}_\epsilon$  and  $\nabla \times \mathbf{e}_\epsilon$  do not oscillate too much as  $\epsilon \rightarrow 0$ );
- $\mathbf{j}_\epsilon$  and  $\mathbf{e}_\epsilon$  converge weakly as  $\epsilon$  tends to zero;

have weak limits  $\mathbf{j}_0$  and  $\mathbf{e}_0$  satisfying

$$\mathbf{j}_0 = \sigma_* \mathbf{e}_0.$$

Again, *any* sequence  $\sigma_\epsilon(\mathbf{x})$  satisfying (1.8) has a subsequence that  $H$ -converges to a tensor field  $\sigma_*(\mathbf{x})$  (Tartar 1978; Murat and Tartar 1985, 1997).

The definition of  $\Gamma$ -convergence is more abstract. In the current setting it is defined in terms of the quadratic form  $(\nabla \phi_\epsilon) \cdot \sigma_\epsilon \nabla \phi_\epsilon$ , which physically represents the electrical power dissipation. The sequence  $\sigma_\epsilon$  is defined to  $\Gamma$ -converge to  $\sigma_*(\mathbf{x})$  if

- for any potential  $\phi_0(\mathbf{x})$  and any sequence  $\phi_\epsilon(\mathbf{x})$  such that  $\phi_\epsilon(\mathbf{x})$  converges to  $\phi_0(\mathbf{x})$ , we have

$$\liminf_{\epsilon \rightarrow 0} \int_{\Sigma} (\nabla \phi_\epsilon) \cdot \sigma_\epsilon \nabla \phi_\epsilon \geq \int_{\Sigma} (\nabla \phi_0) \cdot \sigma_* \nabla \phi_0;$$

- for any potential  $\phi_0(\mathbf{x})$  there exists a sequence  $\phi_\epsilon(\mathbf{x})$  that converges to  $\phi_0(\mathbf{x})$  such that

$$\lim_{\epsilon \rightarrow 0} \int_{\Sigma} (\nabla \phi_\epsilon) \cdot \sigma_\epsilon \nabla \phi_\epsilon = \int_{\Sigma} (\nabla \phi_0) \cdot \sigma_* \nabla \phi_0.$$

Here  $\varphi_\epsilon(\mathbf{x})$  should be regarded as a sequence of trial potentials, and the first inequality arises from variational principles for the effective tensor (see section 13.1 on page 271). The sequence  $\varphi_\epsilon$  (called a  $\Gamma$ -realizing sequence) can be taken to be the solution of

$$\nabla \cdot \boldsymbol{\sigma}_\epsilon \nabla \phi_\epsilon = \nabla \cdot \boldsymbol{\sigma}_* \nabla \phi_0 \text{ within } \Sigma, \quad \phi_\epsilon = \phi_0 \text{ on } \partial \Sigma.$$

Once again, any sequence  $\boldsymbol{\sigma}_\epsilon(\mathbf{x})$  satisfying (1.8) has a subsequence that  $\Gamma$ -converges to a tensor field  $\boldsymbol{\sigma}_*(\mathbf{x})$  (Dal Maso 1993). One advantage of  $\Gamma$ -convergence is that it is not restricted to linear equations. Using it, Braides (1985) and Müller (1987) have found that the homogenized energy for nonlinear elasticity in a periodic material has to be computed from solutions in increasingly large blocks of unit cells, not just from the solutions in a single unit cell of periodicity, as in the linear case.

Various properties of  $G$ -,  $H$ -, and  $\Gamma$ -convergence have been established. For example, the field  $\boldsymbol{\sigma}_*(\mathbf{x})$  inside a window  $\Omega$  within  $\Sigma$  is unaffected by the values that the sequence  $\boldsymbol{\sigma}_\epsilon$  takes outside the window. Also,  $\boldsymbol{\sigma}_*(\mathbf{x})$  is independent of the source term  $\rho(\mathbf{x})$ .

## References

- Albers, W. 1973. Physical properties of composite materials. In *Proceedings of the Conference on in situ Composites, Sept. 5–8, 1972, Lakeville, Connecticut*, pp. 1–19. Washington, D.C.: National Academy of Sciences. Publication NMAB-308-III. {4, 14}
- Allaire, G. 1992. Homogenization and two-scale convergence. *SIAM Journal on Mathematical Analysis* 23(6):1482–1518. {8, 10, 14}
- Allaire, G. 1997. Mathematical approaches and methods. In U. Hornung (ed.), *Homogenization and Porous Media*, pp. 225–257. Berlin / Heidelberg / London / etc.: Springer-Verlag. ISBN 0-387-94786-8. {13, 14}
- Allaire, G. and M. Briane 1996. Multiscale convergence and reiterated homogenisation. *Proceedings of the Royal Society of Edinburgh. Section A, Mathematical and Physical Sciences* 126(2):297–342. {8, 10, 14}
- Attouch, H. 1984. *Variational Convergence for Functions and Operators*. Applicable Mathematics Series. London: Pitman Publishing Ltd. xiv + 423 pp. ISBN 0-273-08583-2. {13, 14}
- Avellaneda, M. and G. Harshé 1994. Magnetoelectric effect in piezoelectric/magnetostrictive multilayer (2-2) composites. *Journal of Intelligent Material Systems and Structures* 5(4):501–513. {4, 14, 30, 40}
- Avellaneda, M. and P. J. Swart 1998. Calculating the performance of 1-3 piezocomposites for hydrophone applications: An effective medium approach. *Journal of the Acoustical Society of America* 103:1449–1467. {4, 14}
- Bakhvalov, N. S. and G. P. Panasenko 1989. *Homogenisation: Averaging Processes in Periodic Media. Mathematical Problems in the Mechanics of Composite Materials*. Norwell, Massachusetts / Dordrecht, The Netherlands: Kluwer Academic Publishers Group. xxxv + 366 pp. ISBN 0-7923-0049-1. {8, 10, 11, 14}
- Bensoussan, A., J.-L. Lions, and G. Papanicolaou 1978. *Asymptotic Analysis for Periodic Structures*. Amsterdam: North-Holland Publishing Co. xxiv + 700 pp. ISBN 0-444-85172-0. {8, 10, 11, 14, 221, 242}

- Beran, M. J. 1968. *Statistical Continuum Theories*. New York: Interscience Publishers. xv + 424 pp. ISBN 0-470-06861-2. {xxv, xxvi, 11, 15, 291, 309, 489, 491}
- Bergman, D. J. and L. G. Fel 1999. Enhancement of thermoelectric power factor in composite thermoelectrics. *Journal of Applied Physics* 85(12):8205–8217. {3, 15, 97, 110, 580, 597}
- Braides, A. 1985. Homogenization of some almost periodic coercive functional. *Rendiconti. Accademia Nazionale delle Scienze detta dei XL. Serie V. Memorie di Matematica. Parte I* 9(1):313–321. {14, 15}
- Briane, M. 1998. Homogenization in some weakly connected domains. *Ricerche di Matematica (Napoli)* 47(1):51–94. {9, 15}
- Briane, M. and L. Mazliak 1998. Homogenization of two randomly weakly connected materials. *Portugaliae Mathematica* 55(2):187–207. {9, 15}
- Buttazzo, G. 1989. *Semicontinuity, Relaxation and Integral Representations in the Calculus of Variations*. Harlow, Essex, United Kingdom: Longman Scientific and Technical. iv + 222 pp. ISBN 0-582-01859-5. {13, 15}
- Cioranescu, D. and J. Saint Jean Paulin 1999. *Homogenization of Reticulated Structures*. Berlin / Heidelberg / London / etc.: Springer-Verlag. xx + 346 pp. ISBN 0-387-98634-0. {11, 15}
- Dal Maso, G. 1993. *An Introduction to  $\Gamma$ -Convergence*. Basel, Switzerland: Birkhäuser Verlag. xiv + 340 pp. ISBN 0-8176-3679-X. {13–15}
- De Giorgi, E. 1975. Sulla convergenza di alcune successioni di integrali del tipo dell'area. *Rendiconti di Matematica* (6) 8:277–294. {12, 15}
- De Giorgi, E. 1984.  $G$ -operators and  $\Gamma$ -convergence. In *Proceedings of the International Congress of Mathematicians (Warsaw, 1983)*, pp. 1175–1191. Warsaw, Poland: PWN. {13, 15}
- Einstein, A. 1905. Eine neue Bestimmung der Moleküldimensionen. (German) [A new determination of molecular dimensions]. *Annalen der Physik* 19:289–306. English translation in (Stachel 1998, pp. 45–69). {2, 15}
- Faraday, M. 1839. *Experimental Researches in Electricity*. London: Richard and John Edward Taylor. pars. 1669, 1670. {2, 15}
- Gibiansky, L. V. and S. Torquato 1997. On the use of homogenization theory to design optimal piezocomposites for hydrophone applications. *Journal of the Mechanics and Physics of Solids* 45(5):689–708. {4, 15}
- Golden, K. and G. Papanicolaou 1983. Bounds for effective parameters of heterogeneous media by analytic continuation. *Communications in Mathematical Physics* 90(4):473–491. {11, 12, 15, 248, 268, 370, 376, 393, 571, 598, 603, 617}
- Greer, R. T. 1969. Submicron structure of amorphous opal. *Nature* 224:1199–1200. {3, 15}
- Harshé, G., J. P. Dougherty, and R. E. Newnham 1993a, September. Theoretical modelling of 3-0/0-3 magnetoelectric composites. *International Journal of Applied Electromagnetics in Materials* 4(2):161–171. {4, 15}

- Harshé, G., J. P. Dougherty, and R. E. Newnham 1993b, September. Theoretical modelling of multilayer magnetoelectric composites. *International Journal of Applied Electromagnetics in Materials* 4(2):145–159. {4, 16}
- Hashin, Z. 1983. Analysis of composite materials — A survey. *Journal of Applied Mechanics* 50:481–505. {xxv, xxvii, 7, 16}
- Khruslov, E. Y. 1978. Asymptotic behavior of the solutions of the second boundary value problem in the case of the refinement of the boundary of the domain. *Matematicheskii sbornik* 106(4):604–621. English translation in *Math. USSR Sbornik* 35:266–282 (1979). {9, 16}
- Klicker, K. A., J. V. Biggers, and R. E. Newnham 1981. Composites of PZT and epoxy for hydrostatic transducer applications. *Journal of the American Ceramic Society* 64:5–9. {4, 16}
- Kozlov, S. M. 1978. Averaging of random structures. *Doklady Akademii Nauk SSSR* 241 (5):1016–1019. English translation in *Soviet Math. Dokl.* 19(4):950–954 (1978). {11, 12, 16}
- Lakes, R. 1987. Foam structures with a negative Poisson's ratio. *Science* 235:1038–1040. {2, 16, 652, 668}
- Lakes, R. 1993. Materials with structural hierarchy. *Nature* 361:511–515. {5, 16, 479, 494}
- Lakes, R. 1996. Cellular solid structures with unbounded thermal expansion. *Journal of Materials Science Letters* 15(6):475–477. {3, 4, 16}
- Landauer, R. 1978. Electrical conductivity in inhomogeneous media. In J. C. Garland and D. B. Tanner (eds.), *Electrical Transport and Optical Properties of Inhomogeneous Media*, pp. 2–43. Woodbury, New York: American Institute of Physics. ISBN 0-88318-139-8. {2, 16, 185, 193, 217}
- Larsen, U. D., O. Sigmund, and S. Bouwstra 1997. Design and fabrication of compliant micro-mechanisms and structures with negative Poisson's ratio. *Journal of Microelectromechanical Systems* 6:99–106. {2, 3, 16, 653, 668}
- Markov, K. Z. 2000. Elementary micromechanics of heterogeneous media. In K. Markov and L. Preziosi (eds.), *Heterogeneous Media: Micromechanics Modeling Methods and Simulations*, Modeling and Simulation in Science, Engineering and Technology, pp. 1–162. Basel, Switzerland: Birkhäuser Verlag. ISBN 0-8176-4083-5. {xxv, xxvii, 2, 16, 185, 217, 346, 353}
- Matthews, F. L. and R. D. Rawlings 1994. *Composite Materials: Engineering and Science*. London: Chapman and Hall. ix + 470 pp. ISBN 0-412-55960-9. {xxiv, xxvii, 1, 16}
- Maxwell, J. C. 1873. *A Treatise on Electricity and Magnetism*. Oxford, United Kingdom: Clarendon Press. Article 314 (pp. 365–367). {2, 16}
- Maxwell Garnett, J. C. 1904. Colours in metal glasses and in metallic films. *Philosophical Transactions of the Royal Society of London* 203:385–420. {3, 16, 239, 243}
- Milton, G. W. 1992. Composite materials with Poisson's ratios close to  $-1$ . *Journal of the Mechanics and Physics of Solids* 40(5):1105–1137. {2, 16, 653, 661, 668}
- Müller, S. 1987. Homogenization of nonconvex integral functionals and cellular elastic materials. *Archive for Rational Mechanics and Analysis* 99:189–212. {14, 16}

- Murat, F. and L. Tartar 1985. Calcul des variations et homogénéisation. (French) [Calculus of variation and homogenization]. In *Les méthodes de l'homogénéisation: théorie et applications en physique*, pp. 319–369. Paris: Eyrolles. English translation in *Topics in the Mathematical Modelling of Composite Materials*, pp. 139–173, ed. by A. Cherkaev and R. Kohn, ISBN 0-8176-3662-5. {12, 13, 17, 347, 353, 429, 431, 432, 435, 444, 454, 462, 495, 499, 503, 506, 508, 521, 527, 529, 551}
- Murat, F. and L. Tartar 1997. *H*-convergence. In A. Cherkaev and R. Kohn (eds.), *Topics in the Mathematical Modelling of Composite Materials*, pp. 21–43. Basel, Switzerland: Birkhäuser Verlag. ISBN 0-8176-3662-5 (Boston), 3-7643-3662-5 (Basel). {10, 12, 13, 17}
- Nan, C.-W. 1994. Magnetolectric effect in composites of piezoelectric and piezomagnetic phases. *Physical Review B (Solid State)* 50:6082–6088. {4, 17}
- Nemat-Nasser, S. and M. Hori 1999. *Micromechanics: Overall Properties of Heterogeneous Materials* (Second ed.). Amsterdam: Elsevier. xxiv + 786 pp. ISBN 0-444-50084-7. {xxiii, xxiv, xxvii, 7, 17}
- Nguetseng, G. 1989. A general convergence result for a functional related to the theory of homogenization. *SIAM Journal on Mathematical Analysis* 20(3):608–623. {8, 10, 17}
- Oleinik, O. A., A. S. Shamaev, and G. A. Yosifian 1992. *Mathematical Problems in Elasticity and Homogenization*. Amsterdam: North-Holland Publishing Co. xiii + 398 pp. ISBN 0-444-88441-6. {11, 17, 101, 111}
- Papanicolaou, G. and S. Varadhan 1982. Boundary value problems with rapidly oscillating random coefficients. *Colloquia Mathematica Societatis János Bolyai* 27:835–873. {11, 12, 17, 248, 269}
- Parker, A. R., R. C. McPhedran, D. R. McKenzie, L. C. Botten, and N. A. Nicorovici 2001. Photonic engineering: Aphrodite's iridescence. *Nature* 409(6816):36–37. {3, 17}
- Persson, L.-E., L. Persson, N. Svanstedt, and J. Wyller 1993. *The Homogenization Method: An Introduction*. Lund, Sweden: Studentlitteratur. viii + 80 pp. ISBN 91-44-37661-8. {8, 17}
- Poisson, S. D. 1826. Mémoire sur la théorie du magnétisme. *Mémoires de l'Académie royale des Sciences de l'Institut de France* 5:247–338. {2, 17}
- Raitums, U. 1997. Lecture notes on *G*-convergence, convexification and optimal control problems for elliptic equations. Lecture Notes 39, Department of Mathematics, University of Jyväskylä, Jyväskylä, Finland. iii + 86 pp. {13, 17}
- Rayleigh, L. 1892. On the influence of obstacles arranged in rectangular order upon the properties of a medium. *Philosophical Magazine* 34:481–502. {2, 17, 39, 45}
- Sanchez-Palencia, E. 1980. *Non-Homogeneous Media and Vibration Theory*. Berlin / Heidelberg / London / etc.: Springer-Verlag. ix + 398 pp. ISBN 0-540-10000-8. {xxiii, xxvii, 8, 17, 221, 244}
- Sanders, J. V. 1964. Colour of precious opal. *Nature* 204:1151–1153. {3, 17}
- Sigmund, O. and S. Torquato 1996. Composites with extremal thermal expansion coefficients. *Applied Physics Letters* 69(21):3203–3205. {3, 17}



- Sigmund, O. and S. Torquato 1997. Design of materials with extreme thermal expansion using a three-phase topology optimization method. *Journal of the Mechanics and Physics of Solids* 45(6):1037–1067. {3, 18}
- Sigmund, O., S. Torquato, and I. A. Aksay 1998. On the design of 1-3 piezocomposites using topology optimization. *Journal of Materials Research* 13(4):1038–1048. {4, 18}
- Smith, W. A. 1991. Optimizing electromechanical coupling in piezocomposites using polymers with negative Poisson's ratio. In B. R. McAvoy (ed.), *IEEE 1991 Ultrasonics Symposium Proceedings*, pp. 661–666. Piscataway, New Jersey: IEEE press. {4, 18}
- Smyshlyaev, V. P. and K. D. Cherednichenko 2000. On rigorous derivation of strain gradient effects in the overall behaviour of heterogeneous media. *Journal of the Mechanics and Physics of Solids* 48(6/7):1325–1357. {10, 18}
- Spagnolo, S. 1968. Sulla convergenza della soluzioni di equazione paraboliche ed ellittiche. *Annali della Scuola Normale Superiore di Pisa. Serie III* 22:571–597. {12, 13, 18}
- Stachel, J. (ed.) 1998. *Einstein's miraculous year: five papers that changed the face of physics*. Princeton, New Jersey: Princeton University Press. xv + 198 pp. With the assistance of Trevor Lipscombe, Alice Calaprice, and Sam Elworthy, and with a foreword by Roger Penrose. ISBN 0-691-05938-1. {15, 18}
- Tartar, L. 1978. Quelques remarques sur l'homogénéisation. In H. Fujita (ed.), *Functional Analysis and Numerical Analysis*, pp. 469–481. Tokyo: Japan Society for the Promotion of Sciences. {10, 12, 13, 18}
- Taylor, G. I. 1954. The two coefficients of viscosity for an incompressible fluid containing air bubbles. *Proceedings of the Royal Society of London. Series A, Mathematical and Physical Sciences* 226:34–39. {3, 18, 234, 244}
- Zhikov, V. V., S. M. Kozlov, and O. A. Oleinik 1994. *Homogenization of Differential Operators and Integral Functionals*. Berlin / Heidelberg / London / etc.: Springer-Verlag. xi + 570 pp. ISBN 3-540-54809-2 (Berlin), 0-387-54809-2 (New York). {xxv, xxviii, 8, 11, 13, 18, 47, 58, 200, 220}