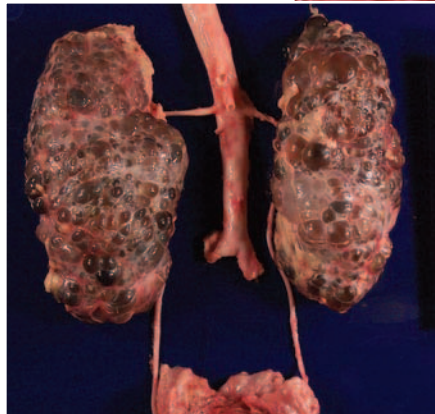
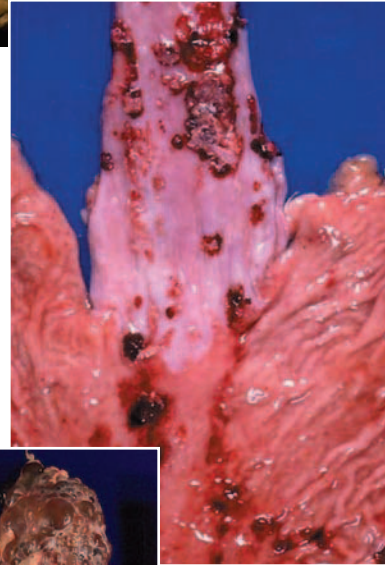
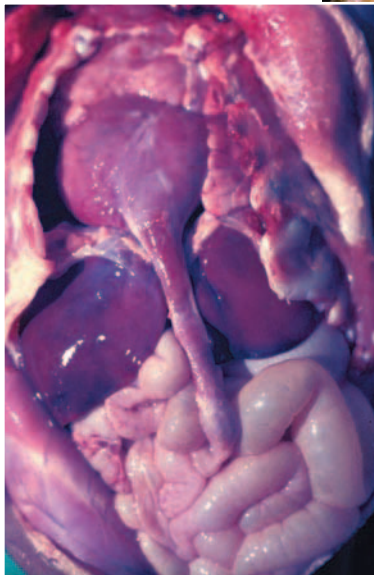
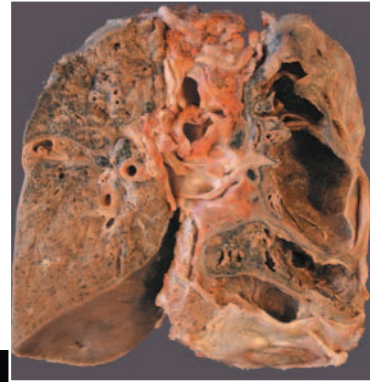
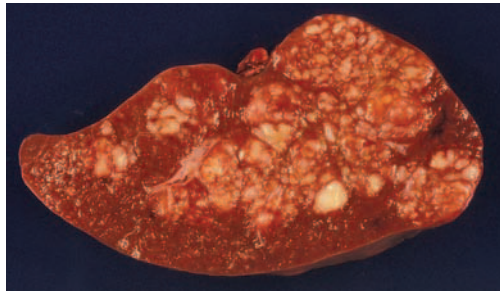


ATLAS OF GROSS PATHOLOGY

Detailed understanding of gross pathology is mandatory for successful pathologists, but this knowledge also provides a sound foundation for those intending to become surgeons, internists, and obstetrician/gynecologists. Some knowledge of gross pathology is important for members of the allied health professions and dental students. For pathologists, pathology residents, and pathology assistants, knowledge of gross pathology is essential for guidance in selecting the correct areas of pathologic lesions to sample for microscopy and frozen section examination. This atlas aims to provide a comprehensive illustration and description of a wide range and number of pathologic processes and diseases affecting all the major organs of the body. Emphasis is placed on how the anatomic structure of different organs may determine the pattern of involvement by disease processes and how such patterns may aid in the correct diagnosis of the gross pathology. In some cases, multiple illustrations of disease processes are given to show evolution of the disease. Histologic illustrations of selected gross lesions are also included where relevant. The atlas is illustrated with more than 1,200 color photographs.

Dr. Alan G. Rose, MD, FRCPath, FACC, is Professor of Pathology at the University of Minnesota Medical School. He is also the Director of Autopsy Service at the University of Minnesota Medical Center, Fairview; the Residency and Fellowship Training Program; and the Medical School Pathology Teaching Program at the University of Minnesota.



ATLAS OF GROSS PATHOLOGY

with Histologic Correlation

ALAN G. ROSE
University of Minnesota



CAMBRIDGE UNIVERSITY PRESS
Cambridge, New York, Melbourne, Madrid, Cape Town, Singapore, São Paulo, Delhi

Cambridge University Press
32 Avenue of the Americas, New York, NY 10013-2473, USA
www.cambridge.org
Information on this title: www.cambridge.org/9780521868792

© Alan G. Rose 2008

This publication is in copyright. Subject to statutory exception and to the provisions of relevant collective licensing agreements, no reproduction of any part may take place without the written permission of Cambridge University Press.

First published 2008

Printed in Hong Kong by Golden Cup

A catalog record for this publication is available from the British Library.

Library of Congress Cataloging in Publication Data

Rose, Alan G., 1940–
Atlas of gross pathology : with histologic correlation / Alan G. Rose.
p. ; cm.
Includes bibliographical references and index.
ISBN 978-0-521-86879-2 (hardback)
1. Pathology – Atlases. 2. Anatomy, Pathological – Atlases. 3. Histology, Pathological – Atlases. I. Title.
[DNLM: 1. Pathology – Atlases. QZ 17 R716a 2008]

RB33.R67 2008
616.07 – dc22 2008010451

ISBN 978-0-521-86879-2 hardback

Every effort has been made in preparing this publication to provide accurate and up-to-date information that is in accord with accepted standards and practice at the time of publication. Nevertheless, the authors, editors, and publisher can make no warranties that the information contained herein is totally free from error, not least because clinical standards are constantly changing through research and regulation. The authors, editors, and publisher therefore disclaim all liability for direct or consequential damages resulting from the use of material contained in this publication. Readers are strongly advised to pay careful attention to information provided by the manufacturer of any drugs or equipment that they plan to use.

Cambridge University Press has no responsibility for the persistence or accuracy of URLs for external or third-party Internet Web sites referred to in this publication and does not guarantee that any content on such Web sites is, or will remain, accurate or appropriate.

CONTENTS

1	Cardiac Diseases	<i>page</i>	1
2	Pulmonary Pathology		90
3	Kidneys, Ureters, and Urinary Bladder		157
4	Liver, Biliary System, and Pancreas		207
5	Salivary Glands and GIT		272
6	Female Genital Tract and Breast		358
7	Diseases of the Male Genital System		428
8	Bones and Joints		460
9	Diseases of the Spleen, Lymph Nodes, and the Thymus Gland		515
10	Pituitary, Carotid Body, Thyroid Gland, and Adrenals		541
11	Skin and Soft Tissues		566
12	Central Nervous System		607
	Index		655

Cambridge University Press
978-0-521-86879-2 - Atlas of Gross Pathology: With Histologic Correlation
Alan G. Rose
Frontmatter
[More information](#)

ATLAS OF GROSS PATHOLOGY