

Hands-On Electronics

A One-Semester Course for
Class Instruction or Self-Study

Daniel M. Kaplan

and

Christopher G. White

Illinois Institute of Technology



PUBLISHED BY THE PRESS SYNDICATE OF THE UNIVERSITY OF CAMBRIDGE
The Pitt Building, Trumpington Street, Cambridge, United Kingdom

CAMBRIDGE UNIVERSITY PRESS
The Edinburgh Building, Cambridge CB2 2RU, UK
40 West 20th Street, New York, NY 10011-4211, USA
477 Williamstown Road, Port Melbourne, VIC 3207, Australia
Ruiz de Alarcón 13, 28014 Madrid, Spain
Dock House, The Waterfront, Cape Town 8001, South Africa
<http://www.cambridge.org>

© Cambridge University Press 2003

This book is in copyright. Subject to statutory exception
and to the provisions of relevant collective licensing agreements,
no reproduction of any part may take place without
the written permission of Cambridge University Press.

First published 2003

Printed in the United Kingdom at the University Press, Cambridge

Typefaces Times 11/14.5 pt and Helvetica Neue *System* L^AT_EX 2_ε [TB]

A catalogue record for this book is available from the British Library

ISBN 0 521 81536 3 hardback
ISBN 0 521 89351 8 paperback

Contents

<i>List of figures</i>	<i>page</i>	<i>xi</i>
<i>List of tables</i>		xv
<i>About the authors</i>		xvi
<i>To the Reader</i>		xvii
<i>Acknowledgments</i>		xviii
<i>Introduction</i>		xix
<hr/>		
1	Equipment familiarization: multimeter, breadboard, and oscilloscope	1
<hr/>		
1.1	Multimeter	1
1.2	Breadboard	2
1.2.1	Measuring voltage	4
1.2.2	Measuring current; resistance and Ohm's law	5
1.2.3	Measuring resistance	8
1.3	Oscilloscope	8
1.3.1	Probes and probe test	10
1.3.2	Display	11
1.3.3	Vertical controls	11
1.3.4	Horizontal sweep	12
1.3.5	Triggering	12
1.3.6	Additional features	13
<hr/>		
2	RC circuits	15
<hr/>		
2.1	Review of capacitors	15
2.1.1	Use of capacitors; review of AC circuits	17
2.1.2	Types and values of capacitors	19

2.2	Review of current, voltage, and power	20
2.2.1	Destructive demonstration of resistor power rating	21
2.3	Potentiometer as voltage divider	22
2.3.1	DC voltage divider	23
2.3.2	AC voltage divider	23
2.4	<i>RC</i> circuit	24
2.5	<i>RC</i> circuit as integrator	24
2.6	Low-pass filter	25
2.7	<i>RC</i> circuit as differentiator	27
2.8	High-pass filter	28
2.9	Summary of high- and low-pass filters	28

3 Diodes 31

3.1	Semiconductor basics	31
3.2	Types of diodes	35
3.3	Rectification	36
3.4	Diode action – a more sophisticated view	37
3.5	Measuring the diode characteristic	38
3.6	Exploring rectification	40
3.7	Input and output impedance	45

4 Bipolar transistors 47

4.1	Bipolar-junction-transistor basics	47
4.1.1	Basic definitions	50
4.1.2	Simplest way to analyze transistor circuits	51
4.1.3	Ebers–Moll transistor model	52
4.2	Experiments	54
4.2.1	Checking transistors with a meter	54
4.2.2	Emitter follower	55
4.2.3	Common-emitter amplifier	57
4.2.4	Collector as current source	59
4.2.5	Transistor switch	60
4.3	Additional exercises	61
4.3.1	Darlington connection	61

- 4.3.2 Push–pull driver 62
- 4.3.3 Common-base amplifier 63

5 Transistors II: FETs 65

- 5.1 Field-effect transistors 65
 - 5.1.1 FET characteristics 66
 - 5.1.2 Modeling FET action 68
- 5.2 Exercises 69
 - 5.2.1 FET characteristics 69
 - 5.2.2 FET current source 70
 - 5.2.3 Source follower 71
 - 5.2.4 JFET amplifier 73

6 Transistors III: differential amplifier 75

- 6.1 Differential amplifier 75
 - 6.1.1 Operating principle 76
 - 6.1.2 Expected differential gain 76
 - 6.1.3 Measuring the differential gain 77
 - 6.1.4 Input offset voltage 78
 - 6.1.5 Common-mode gain 78
- 6.2 Op amps and their building blocks 79
 - 6.2.1 Current mirror 79
 - 6.2.2 Differential amplifier with current-source loads 80
 - 6.2.3 Improved current mirror 82
 - 6.2.4 Wilson current mirror 82

7 Introduction to operational amplifiers 85

- 7.1 The 741 operational amplifier 85
 - 7.1.1 741 pinout and power connections 86
 - 7.1.2 An ideal op amp 87
 - 7.1.3 Gain of inverting and noninverting amplifiers 88
 - 7.1.4 Op amp ‘golden rules’ 90
 - 7.1.5 The nonideal op amp 90

7.2 Experiments	91
7.2.1 Testing open-loop gain	91
7.2.2 Inverting amplifier	92
7.2.3 Noninverting amplifier	93
7.2.4 Voltage follower	94
7.2.5 Difference amplifier	95
7.3 Additional experiments	97
7.3.1 Current source	97
7.3.2 Noninverting summing amp with difference amplifier	98

8 More op amp applications 101

8.1 Op amp signal processing	101
8.1.1 Differentiator	102
8.1.2 Integrator	103
8.1.3 Logarithmic and exponential amplifiers	105
8.2 Experiments	106
8.2.1 Differential and integral amplifiers	106
8.2.2 Logarithmic and exponential amplifiers	108
8.2.3 Op amp active rectifier	108
8.2.4 Op amp with push–pull power driver	109
8.3 Additional exercises	111

9 Comparators and oscillators 113

9.1 Experiments	113
9.1.1 Op amp as comparator	113
9.1.2 Unintentional feedback: oscillation	115
9.1.3 Intentional positive feedback: Schmitt trigger	116
9.1.4 RC relaxation oscillator	117
9.1.5 555 timer IC	118
9.2 Additional experiments	121
9.2.1 Alarm!	121
9.2.2 Sine/cosine oscillator	122
9.2.3 Active bandpass filter	123

10	Combinational logic	125
10.1	Digital logic basics	125
10.1.1	Logic levels	126
10.1.2	Logic families and history	127
10.1.3	Logic gates	129
10.1.4	Summary of Boolean algebra	130
10.2	CMOS and TTL compared	131
10.2.1	Diode logic	131
10.2.2	Transistor–transistor logic (TTL)	132
10.2.3	Complementary MOSFET logic (CMOS)	133
10.2.4	Powering TTL and TTL-compatible integrated circuits	136
10.3	Experiments	137
10.3.1	LED logic indicators and level switches	137
10.3.2	MOSFETs	138
10.3.3	CMOS NAND gate	140
10.3.4	Using NANDs to implement other logic functions	140
10.3.5	TTL quad XOR gate	141
10.4	Additional exercises	142
10.4.1	7485 4-bit magnitude comparator	142
11	Flip-flops: saving a logic state	143
11.1	General comments	144
11.1.1	Schematics	144
11.1.2	Breadboard layout	144
11.1.3	Synchronous logic	144
11.1.4	Timing diagrams	144
11.2	Flip-flop basics	145
11.2.1	Simple RS latch	145
11.2.2	D-type flip-flop	147
11.3	JK flip-flop	148
11.4	Tri-state outputs	149

11.5	Flip-flop applications	151
11.5.1	Divide-by-four from JK flip-flops	151
11.5.2	Contact bounce	152
11.5.3	Electronic coin toss	153
12	Monostables, counters, multiplexers, and RAM	155
12.1	Multivibrators	156
12.2	Counters	156
12.3	Experiments	157
12.3.1	Bi-quinary ripple counter	157
12.3.2	Monostable multivibrator	159
12.3.3	Multiplexer and finite-state machine	162
12.3.4	RAM	162
13	Digital↔analog conversion	167
13.1	A simple D/A converter fabricated from familiar chips	168
13.2	Tracking ADC	170
13.3	080x ADC and DAC chips	171
13.3.1	Successive-approximation ADC	171
13.4	Additional exercises	177
13.4.1	Digital recording	177
13.4.2	Successive-approximation ADC built from components	178
	<i>Further reading</i>	183
	<i>Appendix A Equipment and supplies</i>	185
	<i>Appendix B Common abbreviations and circuit symbols</i>	188
	<i>Appendix C RC circuits: frequency-domain analysis</i>	191
	<i>Appendix D Pinouts</i>	194
	<i>Glossary of basic electrical and electronic terms</i>	197
	<i>Index</i>	199

Figures

1.1	Illustration showing many of the basic features of the PB-503 powered Protoboard.	<i>page 3</i>
1.2	Measuring voltage.	5
1.3	Measuring current.	5
1.4	Illustration of the Tektronix TDS 210 digital oscilloscope.	9
2.1	Representation of an arbitrary, periodic waveform.	18
2.2	Circuit demonstrating destructive power loading.	21
2.3	Three schematics representing a resistive voltage divider.	22
2.4	The voltage-divider concept for RC circuits.	24
2.5	High-pass filter or voltage differentiator.	27
2.6	Relationships among input voltages and capacitor and resistor voltages for high- and low-pass RC filters.	29
3.1	Representation of a junction between P-type and N-type semiconductor material.	33
3.2	Diode circuit symbol and biasing.	33
3.3	Typical current–voltage characteristics for germanium and silicon diodes.	34
3.4	Representation of physical diodes and symbols used in circuit diagrams.	35
3.5	Measuring the forward characteristic of a diode.	39
3.6	Power transformer supplies $V_{\text{out}} \approx 25 \text{ V r.m.s.}$	41
3.7	Power transformer with half-wave rectification.	42
3.8	Half-wave rectifier with filter capacitor.	42
3.9	An example of how to insert a diode bridge into a breadboard.	43
3.10	Full-wave rectification using diode bridge.	44
3.11	Full-wave rectification with filter capacitor.	45
3.12	Complete rectifier circuit.	46
4.1	Construction and circuit symbols and biasing examples for NPN and PNP junction transistors.	48

4.2	Schematic representation of how an NPN transistor operates.	49
4.3	Characteristic curves for an NPN bipolar transistor.	51
4.4	Transistor as back-to-back diodes; TO-92 pinout.	55
4.5	Emitter follower.	55
4.6	Emitter follower with optional load circuit for measurement of Z_{out} .	56
4.7	Common-emitter amplifier.	57
4.8	Transistor current source.	59
4.9	Transistor switch.	60
4.10	Darlington pair.	62
4.11	Driving loudspeaker with push–pull buffer.	63
4.12	Common-base amplifier.	64
5.1	Construction and circuit symbols of JFETs.	66
5.2	Schematic representation of JFET operation.	67
5.3	Idealized common-source characteristic curves for a JFET.	67
5.4	Circuit for measuring the common-source characteristic curves.	70
5.5	Self-biasing JFET current source.	71
5.6	Source follower.	72
5.7	Source follower with current-source load.	73
5.8	JFET amplifier.	73
6.1	Differential amplifier and function generator with 100-to-1 attenuator.	76
6.2	Current sink for differential amplifier.	79
6.3	Current mirror.	80
6.4	Differential amplifier with current-mirror load.	81
6.5	Differential amplifier with Wilson-current-mirror load.	82
7.1	Diagram of 8-pin DIP 741 package showing ‘pinout’.	86
7.2	Op amp inverting-amplifier circuit.	88
7.3	Op amp noninverting-amplifier circuit.	89
7.4	Open-loop op amp test circuit.	91
7.5	Circuit for demonstrating summing junction.	93
7.6	Op amp voltage follower and voltage follower as the input stage to an inverting-op-amp circuit.	95
7.7	Difference amplifier.	96
7.8	Op amp current source.	98
7.9	Fancy summing circuit.	99
8.1	Generalized op amp inverting-amplifier circuit.	102

8.2	Basic op amp differentiator.	102
8.3	Improved op amp differentiator.	103
8.4	Basic op amp integrator.	104
8.5	Improved op amp integrator.	104
8.6	Op amp logarithmic amplifier.	105
8.7	Op amp exponential amplifier.	105
8.8	Simple and improved versions of an op amp half-wave rectifier.	109
8.9	Op amp follower with push–pull output-buffer power driver with two feedback arrangements.	110
8.10	Block diagram showing how to build an ‘exponentiator’.	111
9.1	Poor comparator and 311 comparator.	114
9.2	311 comparator with 10 k series input resistor.	115
9.3	Schmitt trigger using 311 comparator.	116
9.4	<i>RC</i> relaxation oscillator using comparator.	118
9.5	Block diagram for the 555 timer IC.	119
9.6	555 timer IC used as an oscillator and as a one-shot or timer.	120
9.7	555 timer configured as an alarm.	121
9.8	Sine/cosine oscillator.	122
9.9	Active bandpass filter.	123
10.1	Logic levels for various 7400-family lines.	127
10.2	Labeling of 7400-series chips.	129
10.3	Standard logic gates with truth tables.	130
10.4	De Morgan’s theorems expressed symbolically.	131
10.5	Two-input diode gate.	132
10.6	Diode–transistor NAND gate using 2N3904s.	132
10.7	Schematic representation of an ‘enhancement-mode’ N-channel MOSFET.	134
10.8	Schematic representations of a CMOS inverter constructed using one N-channel and one P-channel MOSFET.	135
10.9	Schematic representation of a CMOS NAND gate with LED logic-level indicator.	136
10.10	Logic-level switch using either an SPST or SPDT switch and a pull-up resistor.	137
10.11	Circuits for measuring the channel resistance as a function of gate voltage.	138
11.1	Timing diagram with timing definitions for a rising-edge-triggered flip-flop.	145

11.2	Simple RS latch made of two-input NANDs with state table.	146
11.3	7474 D-type flip-flop with state table.	147
11.4	Sample timing diagram for a (positive-edge-triggered) 7474 D-type flip-flop.	147
11.5	Pinout of the 74112 JK flip-flop.	149
11.6	Pinout and power connections for the 74373 and input and output connections for testing the tri-state output.	150
11.7	Divide-by-four ripple counter.	151
11.8	Synchronous divide-by-four counter.	152
11.9	Looking at contact bounce by driving a divide-by-four counter from a switch.	153
12.1	Pinout of 7490 decade counter.	157
12.2	Pinout of TIL311 hex display.	158
12.3	Timing diagram for a gated clock signal.	160
12.4	Pinout of '121 and '123 one-shots with external <i>RC</i> timing network.	160
12.5	Substandard outputs resulting from gating clock signals.	161
12.6	Pinout of 74150 16-to-1 multiplexer.	163
12.7	Pinout of 7489 16×4 RAM.	163
13.1	Simple D/A converter and output waveform resulting from input counting sequence.	168
13.2	Simple A/D converter.	171
13.3	Pinout for ADC080x series of A/D converters and the on-chip self-clocking configuration.	172
13.4	Pinout for DAC080x series of D/A chips.	175
13.5	Method for producing a DC-shifted waveform.	176
13.6	Control logic for 8-bit successive-approximation ADC.	179
13.7	8-bit successive-approximation ADC.	180
C.1	Series <i>RC</i> circuit.	193
C.2	Right triangle to illustrate Eq. C.17.	193

Tables

1.1	Digital multimeter inputs.	<i>page 2</i>
1.2	Color code for nonprecision resistors.	7
2.1	Some typical dielectric materials used in capacitors.	16
3.1	A sample of commercially available diodes.	36
4.1	A sample of commercially available bipolar transistors.	50
10.1	Common families within the 7400 series.	128

1 Equipment familiarization: multimeter, breadboard, and oscilloscope

In this chapter you will become acquainted with the ‘workhorses’ of electronics testing and prototyping: multimeters, breadboards, and oscilloscopes. You will find these to be indispensable aids both in learning about and in doing electronics.

Apparatus required

One dual-trace oscilloscope, one powered breadboard, one digital multimeter, two 10X attenuating scope probes, red and black banana leads, two alligator clips.

1.1 Multimeter

You are probably already familiar with multimeters. They allow measurement of voltage, current, and resistance. Just as with wristwatches and clocks, in recent years digital meters (commonly abbreviated to DMM for digital multimeter or DVM for digital voltmeter) have superseded the analog meters that were used for the first century and a half or so of electrical work. The multimeters we use have various input jacks that accept ‘banana’ plugs, and you can connect the meter to the circuit under test using two banana-plug leads. The input jacks are described in Table 1.1. Depending on how you configure the meter and its leads, it displays

- the voltage difference *between* the two leads,
- the current flowing *through* the meter from one lead to the other, or
- the resistance connected *between* the leads.

Multimeters usually have a selector knob that allows you to select what is to be measured and to set the full-scale range of the display to handle inputs of various size. Note: to obtain the highest measurement precision, set the knob to the lowest setting for which the input does not cause overflow.

Table 1.1. Digital multimeter inputs.

Input jack	Purpose	Limits ^a
COM	reference point used for all measurements	
V Ω	input for voltage or resistance measurements	1000 V DC/750 V AC
mA	input for current measurements (low scale)	200 mA
10 A	input for current measurements (high scale)	10 A

^aFor the BK Model 2703B multimeters used in the authors' labs.

To avoid damaging the meter, be sure to read the safety warnings in its data sheet or instruction booklet.

1.2 Breadboard

'Breadboard' may seem a peculiar term! Its origins go back to the days when electronics hobbyists built their circuits on wooden boards. The breadboards we use represent a great step forward in convenience, since they include not only sockets for plugging in components and connecting them together, but also power supplies, a function generator, switches, logic displays, etc.

The exercises that follow were designed using the Global Specialties PB-503 Protoboard. If you do not have access to a PB-503, any suitable breadboard will do, provided you have a function generator and two variable power supplies. Additional components that you will need along the way (that are built into the PB-503) include a 1 k and a 10 k potentiometer, a small 8 Ω speaker, two debounced push-button switches, several LED logic indicators, and several on-off switches.

Fig. 1.1 displays many of the basic features of the PB-503. (For simplicity, some PB-503 features that will be used in experiments in later chapters have been omitted.) While the following description is specific to the PB-503, many other breadboards share some, if not all, of these features. The description will thus be of some use for users of other breadboard models as well.

The breadboard's sockets contain spring contacts: if a bare wire is pushed into a socket, the contacts press against it, making an electrical connection. The PB-503's sockets are designed for a maximum wire thickness of 22 AWG ('American Wire Gauge') – anything thicker (i.e., with *smaller*

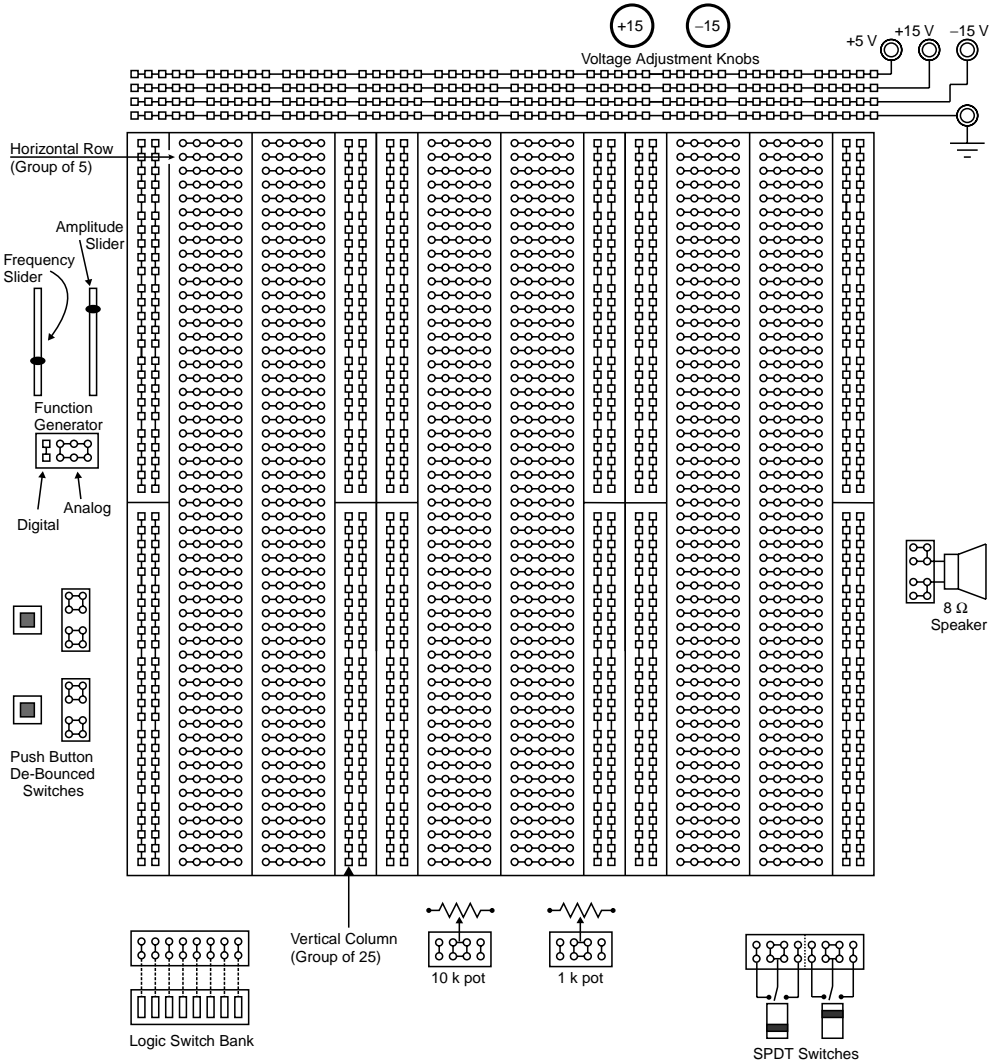


Fig. 1.1. Illustration showing many of the basic features of the PB-503 powered Protoboard, with internal connections shown for clarity. Note that each vertical column is broken into halves with no built-in connection between the top and bottom.

AWG number) may damage the socket so that it no longer works reliably for thin wires. The PB-503 sockets are internally connected in groups of five (horizontal rows) or twenty five (vertical columns; see Fig. 1.1).

Each power supply connects to a ‘banana’ jack and also to a row of sockets running along the top edge of the unit. The three supplies, +5 V (red jack), +15 V (yellow jack), and –15 V (blue jack), have a common

‘ground’ connection (black jack). The +15 V and –15 V supplies are actually adjustable, using the knobs provided, from less than 5 volts to greater than 15 volts.

1.2.1 Measuring voltage

Voltage is always referenced to something, usually a local ground. For the following exercises you will measure voltage with respect to the breadboard ground, which is also the common ground for the three power supplies. To measure a voltage, you will first connect the ‘common’ jack of the meter to the breadboard common (i.e., breadboard ground). Next you will connect the meter’s ‘voltage’ jack to the point of interest. The meter will then tell you the voltage with respect to ground at this one point.

When connecting things, it’s always a good idea to use color coding to help keep track of which lead is connected to what. Use a black banana-plug lead to connect the ‘common’ input of the meter to the ‘ground’ jack of the breadboard (black banana jack labeled with a ∇ or $\frac{\perp}{\text{—}}$ symbol). Use a red banana-plug lead with the ‘V’ input of the meter.

Since the DMM is battery powered, it is said to ‘float’ with respect to ground (i.e., within reason,¹ one may connect the DMM’s common jack to any arbitrary voltage with respect to the breadboard ground). It is therefore possible to measure the voltage drop across any circuit element by simply connecting the DMM directly across that element (see Fig. 1.2).

Warning: This is not true for most AC-powered meters and oscilloscopes.

- ▷ To practice measuring voltages, measure and record the voltage between each power supply jack and ground. In each case set the meter’s range for the highest precision (i.e., one setting above overflow).
- ▷ Adjust the +15 V and –15 V supplies over their full range and record the minimum and maximum voltage for each. Carefully set the +15 V supply to a voltage half-way between its minimum and maximum for use in the next part.

¹ If you wonder what we mean by ‘within reason’, ask yourself what bad thing would happen if you connected the DMM common to, say, twenty million volts – if you’re interested, see e.g. H. C. Ohanian, *Physics*, 2nd edition, vol. 2, ‘Interlude VI’ (Norton, New York, 1988), esp. pp. VI–8 for more information on this.

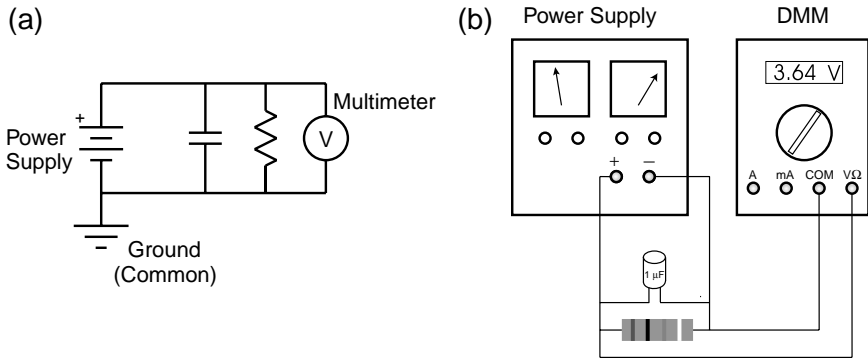


Fig. 1.2. Measuring voltage. (a) An arbitrary circuit diagram is shown as an illustration of how to use a voltmeter. Note that the meter measures the voltage drop across both the resistor and capacitor (which have identical voltage drops since they are connected in parallel). (b) A drawing of the same circuit showing how the leads for a DMM should be connected when measuring voltage. Notice how the meter is connected in parallel with the resistor.

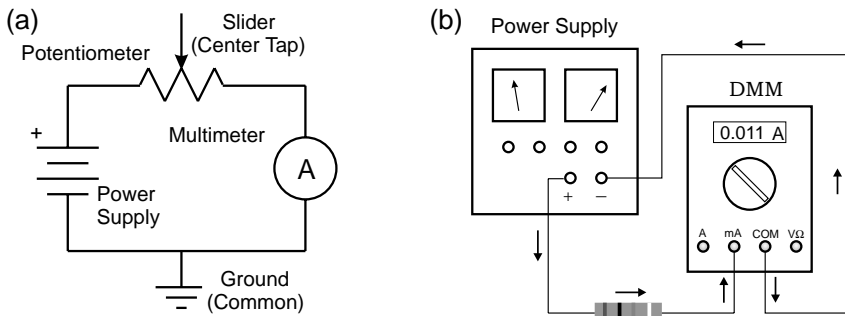


Fig. 1.3. Measuring current. (a) Schematic diagram of series circuit consisting of power supply, 10 k potentiometer, and multimeter. (Note that the center tap of the potentiometer is left unconnected in this exercise – accidentally connecting it to power or ground could lead to excessive current flow and burn out the pot.) (b) A drawing of the same circuit showing how the DMM leads should be configured to measure current. Note that the meter is connected in series with the resistor.

1.2.2 Measuring current; resistance and Ohm's law

Current is measured by connecting a current meter (an ammeter, or a DMM in its 'current' mode) in series with the circuit element through which the current flows (see Fig. 1.3). Note carefully the differences between Fig. 1.2 and Fig. 1.3.

Recall that Ohm's law relates current I , voltage V , and resistance R according to

$$V = IR. \tag{1.1}$$

This is not a universal law of electrical conduction so much as a statement that there exist certain materials for which current is linearly proportional to voltage.² Materials with such a linear relationship are used to fabricate 'resistors': objects with a known and stable resistance. Usually they are little cylinders of carbon, carbon film, metal film, or wound-up wire, encased in an insulating coating, with wire leads sticking out the ends. Often the resistance is indicated by means of colored stripes according to the resistor color code (Table 1.2). Resistors come in various sizes according to their power rating. The common sizes are $\frac{1}{8}$ W, $\frac{1}{4}$ W, $\frac{1}{2}$ W, 1 W, and 2 W.

You can easily verify this linear relationship between voltage and current using the fixed 10 k Ω (10 000 ohm) resistance provided between the two ends of one of the breadboard's 'potentiometers'. A potentiometer is a type of resistor that has an adjustable 'center tap' or 'slider', allowing electrical connections to be made not only at the two ends, but also at an adjustable point along the resistive material.

The '10 k pot' (as it is called for short) is located near the bottom edge of the breadboard, and can be adjusted by means of a large black knob.³ Inside the breadboard's case, the ends of the pot (as well as the center tap) connect to sockets as labeled on the breadboard's front panel. By pushing wires into the sockets you can make a series circuit (Fig. 1.3) consisting of an adjustable power supply, the 10 k pot, and the multimeter (configured to measure current). You can attach alligator clips to the meter leads to connect them to the wires. **But**, before doing so, be sure to observe the following warnings:

- First, turn off the breadboard power to avoid burning anything out if you happen to make a mistake in hooking up the circuit.
- Be careful to keep any exposed bits of metal from touching each other and making a 'short circuit'! Note that most of the exposed metal on

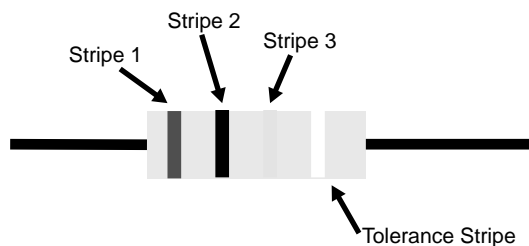
² Of course, the existence of other materials (namely semiconductors) for which the I - V relationship is *nonlinear* makes electronics much more interesting and underlies the transformation of daily life brought about by electronics during the twentieth century.

³ If you don't have a PB-503 breadboard, find a 10 k pot on your breadboard if it has one; otherwise you will have to purchase a separate 10 k pot.

Table 1.2. Color code for nonprecision resistors (5, 10, or 20% tolerance).

The resistance in ohms is the sum of the values in columns 1 and 2, multiplied by the value in column 3, plus or minus the tolerance in column 4. For example, the color code for a 1 k resistor would be 'brown–black–red', for $51\ \Omega$ 'green–brown–black', for $330\ \Omega$ 'orange–orange–brown', etc.

Stripe:	1	2	3	4 (tolerance)
Black	0	0	10^0	
Brown	10	1	10^1	
Red	20	2	10^2	
Orange	30	3	10^3	
Yellow	40	4	10^4	
Green	50	5	10^5	
Blue	60	6	10^6	
Violet	70	7	10^7	
Gray	80	8	10^8	
White	90	9	10^9	
Gold				5%
Silver				10%
None				20%



the breadboard (screw heads for example) has a low-resistance path to ground.

- If you accidentally connect power or ground to the potentiometer's center tap, you can easily burn out the pot, rendering it useless! If in doubt, have someone check your circuit before turning on the power.
- ▷ Use Ohm's law to predict the current that will flow around the circuit if you use the power supply that you set to its midpoint in the previous exercise. What current should flow if the supply is set to its minimum voltage? What is the current if the supply is set to its maximum voltage?

- ▷ Now turn on the breadboard power, measure the currents for these three voltages, and compare with your predictions. Make a graph of voltage vs. current from these measurements. Is the relationship linear? How close is the slope of voltage vs. current to $10\text{ k}\Omega$?

1.2.3 Measuring resistance

Now turn off the breadboard power and disconnect your series circuit. In this and the following part, the pot should connect only to the meter.

- ▷ Set the meter for resistance and measure and record the resistance between the two ends of your $10\text{ k}\Omega$ pot. Due to manufacturing tolerances, you will probably find that it is not exactly $10\text{ k}\Omega$. By what percentage does it differ from the nominal $10\text{ k}\Omega$ value? Does the measured value agree more closely with the slope you previously measured than with the nominal value? Explain.
- ▷ Now connect the meter between the center tap and one end of the pot. What resistance do you observe? What happens to the resistance as you turn the potentiometer's knob?
- ▷ Leaving the knob in one place, measure and record the resistance between the center tap and each end. Do the two measurements add up to the total you measured above? They should – explain why.

1.3 Oscilloscope

With its many switches and knobs, a modern oscilloscope can easily intimidate the faint of heart, yet the scope is an essential tool for electronics troubleshooting and you must become familiar with it. Accordingly, the rest of this laboratory session will be devoted to becoming acquainted with such an instrument and seeing some of the things it can do.

The oscilloscope we use is the Tektronix TDS210 (illustrated in Fig. 1.4). If you don't have a TDS210, any dual-trace oscilloscope, analog or digital, can be used for these labs as long as the bandwidth is high enough – ideally, 30 MHz or higher. While the description below may not correspond exactly to your scope, with careful study of its manual you should be able to figure out how to use your scope to carry out these exercises.

The TDS210 is not entirely as it appears. In the past you may have used an oscilloscope that displayed voltage as a function of time on a

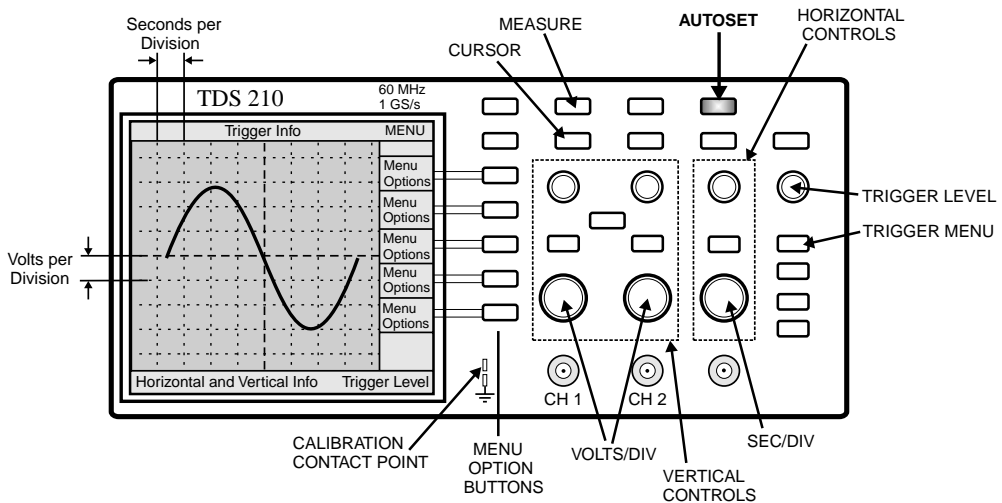


Fig. 1.4. Illustration of the Tektronix TDS210 digital oscilloscope. The basic features to be used in this tutorial are marked. Note and remember the location of the ‘AUTOSET’ button – when all else fails, try autoset!

cathode-ray tube (CRT). While the TDS210 can perform a similar function, it does not contain a CRT (part of the reason it is so light and compact).

Until the 1990s, most oscilloscopes were purely ‘analog’ devices: an input voltage passed through an amplifier and was applied to the deflection plates of a CRT to control the position of the electron beam. The position of the beam was thus a direct analog of the input voltage. In the past few years, analog scopes have been largely superseded by digital devices such as the TDS210 (although low-end analog scopes are still in common use for TV repair, etc.).

A digital scope operates on the same principle as a digital music recorder. In a digital scope, the input signal is sampled, digitized, and stored in memory. The digitized signal can then be displayed on a computer screen.

One of your first objectives will be to set up the scope to do some of the things for which you may already have used simpler scopes. After that, you can learn about multiple traces and triggering. In order to have something to look at on the scope, you can use your breadboard’s built-in function generator, a device capable of producing square waves, sinusoidal waves, and triangular waves of adjustable amplitude and frequency. But start by using the built-in ‘calibrator’ signal provided by the scope on a metal contact labeled ‘probe comp’ (or something similar), often located near the lower right-hand corner of the display screen.

Note that a leg folds down from the bottom of the scope near the front face. This adjusts the viewing angle for greater comfort when you are seated at a workbench, so we recommend that you use it.

1.3.1 Probes and probe test

Oscilloscopes come with *probes*: cables that have a coaxial connector (similar to that used for cable TV) on one end, for connecting to the scope, and a special tip on the other, for connecting to any desired point in the circuit to be tested. To increase the scope's input impedance and affect the circuit under test as little as possible, we generally use a '10X' attenuating probe, which has circuitry inside that divides the signal voltage by ten. Some scopes sense the nature of the probe and automatically correct for this factor of ten; others (such as the TDS210) need to be told by the user what attenuation setting is in use.

As mentioned above, your scope should also have a built-in 'calibrator' circuit that puts out a standard square wave you can use to test the probe (see Fig. 1.4). The probe's coaxial connector slips over the 'CH 1' or 'CH 2' input jack and turns clockwise to lock into place. The probe tip has a spring-loaded sheath that slides back, allowing you to grab the calibrator-signal contact with a metal hook or 'grabber'.

An attenuating scope probe can distort a signal. The manufacturer therefore provides a 'compensation adjustment' screw, which needs to be tuned for minimum distortion. The screw is usually located on the assembly that connects the probe to the scope, or, occasionally, on the tip assembly.

- ▷ Display the calibrator square-wave signal on the scope. If the signal looks distorted (i.e., not square), carefully adjust the probe compensation using a small screwdriver. (If you have trouble achieving a stable display, try 'AUTOSET'.)
- ▷ Check your other probe. Make sure that both probes work, are properly compensated, and have equal calibrations. Sketch the observed waveform.

(Consult your oscilloscope user manual for more information about carrying out a probe test.)

Note that each probe also has an alligator clip (sometimes referred to as the 'reference lead' or 'ground clip'). This connects to the shield of the coaxial cable. It is useful for reducing noise when looking at high-frequency

(time intervals of order nanoseconds) or low-voltage signals. Since it is connected directly to the scope's case, which is grounded via the third prong of the AC power plug, it must never be allowed to touch a point in a circuit other than ground! Otherwise you will create a short circuit by connecting multiple points to ground, which could damage circuit components.

This is no trouble if you are measuring a voltage with respect to ground. But if you want to measure a voltage drop between two points in a circuit, neither of which is at ground, first observe one point (with the probe) and then the other. The difference between the two measurements is the voltage across the element. During this process, the reference lead should remain firmly attached to ground and should not be moved! (Alternatively, you can use two probes and configure the scope to subtract one input from the other.)

Warning: A short circuit will occur if the probe's reference lead is connected anywhere other than ground.

1.3.2 Display

Your oscilloscope user's manual will explain the information displayed on the scope's screen. Record the various settings: timebase calibration, vertical scale factors, etc.

- ▷ Explain briefly the various pieces of information displayed around the edges of the screen.

The following exercises will give you practice in understanding the various settings. For each, you should study the description in your oscilloscope user's manual. The description below is specific to the TDS210; if you have a different model, your manual will explain the corresponding settings for your scope.

1.3.3 Vertical controls

There is a set of 'vertical' controls for each channel (see Fig. 1.4). These adjust the sensitivity (volts per vertical division on the screen) and offset (the vertical position on the screen that corresponds to zero volts). The 'CH 1' and 'CH 2' menu buttons can be used to turn the display of each

channel on or off; they also select which control settings are programmed by the push-buttons just to the right of the screen.

- ▷ Display a waveform from the calibrator on channel 1. What happens when you adjust the POSITION knob? The VOLTS/DIV knob?

1.3.4 Horizontal sweep

To the right of the vertical controls are the horizontal controls (see Fig. 1.4). Normally, the scope displays voltage on the vertical axis and time on the horizontal axis. The SEC/DIV knob sets the sensitivity of the horizontal axis, i.e. the interval of time per horizontal division on the screen. The POSITION knob moves the image horizontally on the screen.

- ▷ How many periods of the square wave are you displaying on the screen? How many divisions are there per period? What time interval corresponds to a horizontal division? Explain how these observations are consistent with the known period of the calibrator signal.
- ▷ Adjust the SEC/DIV knob to display a larger number of periods. Now what is the time per division? How many divisions are there per period?

1.3.5 Triggering

Triggering is probably the most complicated function performed by the scope. To create a stable image of a repetitive waveform, the scope must ‘trigger’ its display at a particular voltage, known as the trigger ‘threshold’. The display is synchronized whenever the input signal crosses that voltage, so that many images of the signal occurring one after another can be superimposed in the same place on the screen. The LEVEL knob sets the threshold voltage for triggering.

You can select whether triggering occurs when the threshold voltage is crossed from below (‘rising-edge’ triggering) or from above (‘falling-edge’ triggering) using the trigger menu (or, for some scope models, using trigger control knobs and switches). You can also select the signal source for the triggering circuitry to be channel 1, channel 2, an external trigger signal, or the 120 V AC power line, and control various other triggering features as well.

Since setting up the trigger can be tricky, the TDS210 provides an automatic setup feature (via the AUTASET button) which can lock in on

almost any repetitive signal presented at the input and adjust the voltage sensitivity and offset, the time sensitivity, and the triggering to produce a stable display.

- ▷ After getting a stable display of the calibrator signal, adjust the LEVEL knob in each direction until the scope just barely stops triggering. What is the range of trigger level that gives stable triggering on the calibrator signal? How does it compare with the amplitude of the calibrator waveform? Does this make sense? Explain.

Next connect the scope probe to the breadboard's function generator – you can do this by inserting a wire into the appropriate breadboard socket and grabbing the other end of the wire with the scope probe's grabber. The function generator's amplitude and frequency are adjusted by means of sliders and slide switches.

- ▷ Look at each of the waveforms available from the function generator: square, sine, and triangle. Try out the frequency and voltage controls and explain how they work. Adjust the function generator's frequency to about 1 kHz.
- ▷ Display both scope channels, with one channel looking at the output of the function generator and the other looking at the scope's calibrator signal. Make sure the vertical sensitivity and offset are adjusted for each channel so that the signal trace is visible.
- ▷ What do you see on the screen if you trigger on channel 1? On channel 2?
- ▷ What do you see if neither channel causes triggering (for example, if the trigger threshold is set too high or too low)?
- ▷ How does this depend on whether you select 'normal' or 'auto' trigger mode? Why? (If you find this confusing, be sure to ask for help, or study the oscilloscope manual more carefully.)

1.3.6 Additional features

The TDS210 has many more features than the ones we've described so far. Particularly useful are the digital measurement features. Push the MEASURE button to program these. You can use them to measure the amplitude, period, and frequency of a signal. The scope does not measure amplitude directly. How then can you derive the amplitude from something the scope does measure?

- ▷ Using the measurement features, determine the amplitude, frequency, and period of a waveform of your choice from the function generator.

You can also use the on-screen cursors to make measurements.

- ▷ Use the cursors to measure the half-period of the signal you just measured.
- ▷ Explain how you made these measurements and what your results were. (A feature that comes in particularly useful on occasion is signal averaging; this is programmed via the `ACQUIRE` button and allows noise, which tends to be random in time, to be suppressed relative to signal, which is usually periodic.)